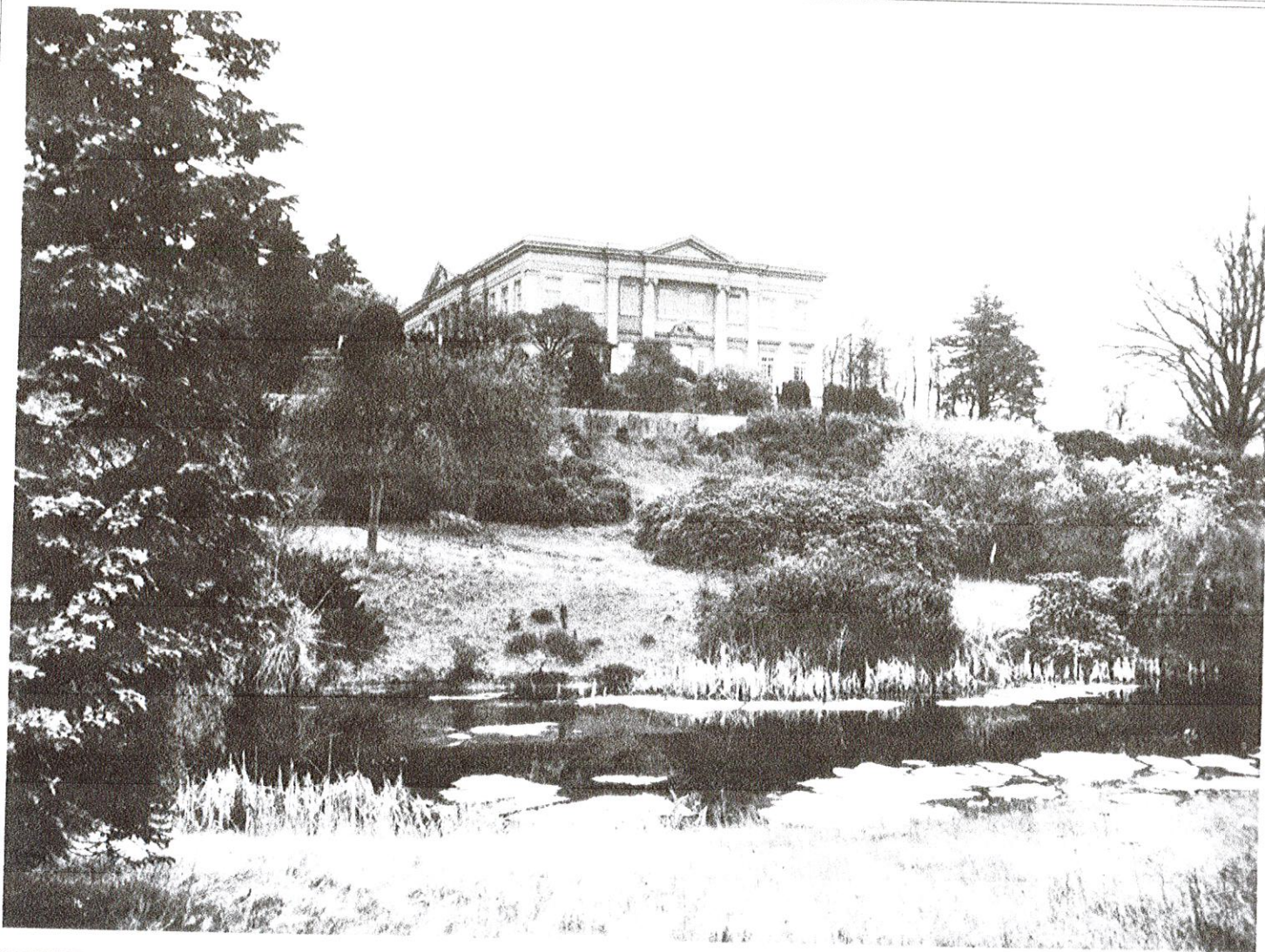


Sunningdale Park
Near Ascot, Berks.



SUNNINGDALE PARK, SOUTH SIDE

Situated about $1\frac{1}{2}$ miles from Sunningdale station on the Southern Railway and approx. 23 miles from London. The Mansion stands in some 113 acres of Parkland and is approached from the south by a Tarmac Drive about a mile long through plantations of rhododendrons, fir, larch, beech and oak and from the north by a shorter, similar drive passing the Garage and Yard. The Drives join and terminate in a circular sweep before the main entrance.

T H E M A N S I O N




AS built in 1930, has a commanding Georgian elevation, brick built and finished in Cement with an imposing facade, with Doric columns on the West and South fronts.

The main entrance is on the West front, where the columns are surmounted by a pediment with shield of arms.


This entrance has a pair of massive and lofty hardwood doors with fine bronze ring handles decorated with masks.

The Entrance hall has stone walls with Portland finish and doors with wrought iron furniture and strap work hinges. Approached from the entrance hall is the Business Room which is walnut-panelled throughout, inset with cupboards, and has a stone open fireplace with ornamental egg and tongue mouldings.

T H E G A L L E R Y

S an interesting feature with well proportioned round arches supported on stone columns with carved capitals, designed with shields, winged masks and other ornaments in Spanish style and solid stone balustrade with circular panels of open tracery. Panelled walnut doors with wrought iron fittings give access to the principal bedrooms.

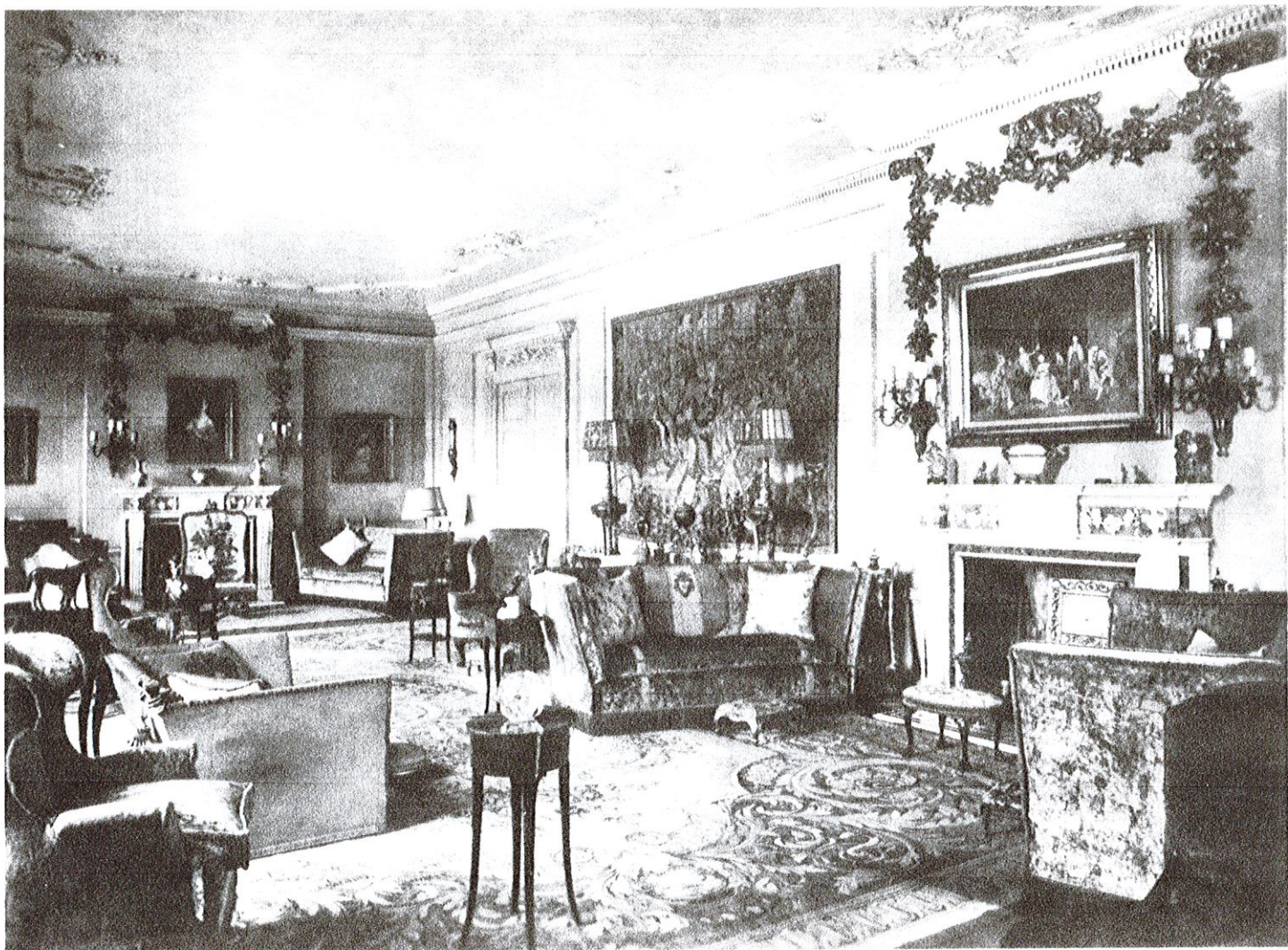
T H E L I B R A R Y

S approached from the Main Hall and measures approx. 32 ft. by 25 ft. which is of Tudor design has rough plaster walls with gilded friezes, with fabulous animals in relief which are repeated above the skirting.

The panelled ceiling is cast with rosettes and ribbon work in Gilt heightened in red and green in antique finish.

The stone open fireplace has columned sides with a projecting hooded mantel.

The walnut doors have carved banded and gilt frames, this room faces South and East with French casements leading to the paved terrace.



THE DRAWING ROOM

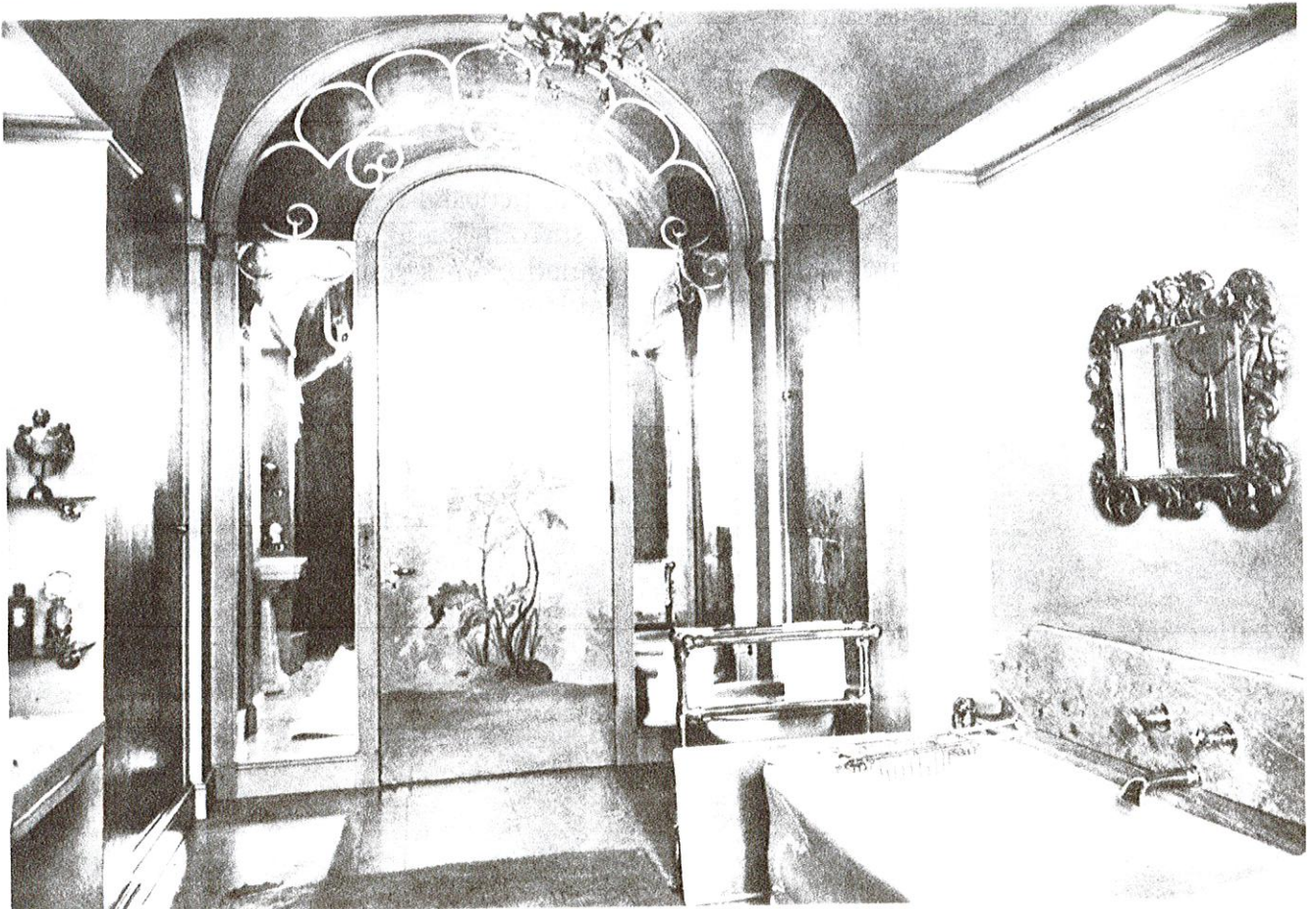
IS in 18th Century English style and measures approx. 50 ft. by 22 ft. The ceiling has scrolled and floral borders in period design.

It has a pair of Adam fireplaces of statuary marble with Verdi surrounds and giallo antico friezes carved with medusa masks, vines and classic ewers with scrolled jambs and Banded hearths.

This room faces South and East with eight French casements leading to the paved terrace.



BEDROOM - PRINCIPAL SUITE



BATHROOM - PRINCIPAL SUITE

THE SECONDARY SUITE



ACES East and has a separate lobby leading to the Main Bedroom approx. 19 ft. by 18 ft. with panelled dado, fitted with concealed lavatory basin and statuary marble mantel in rococo design.

Bedroom approx. 17 ft. by 12 ft. with concealed lavatory basin and open fireplace with steel and marble surround and polished oak floor.

Dressing Room approx. 16 ft. by 10 ft. with concealed lavatory basin.

Bathroom with synthetic marble floor and green suite of bath, pedestal basin and W.C.

A further suite facing West with separate lobby leading to :- Bedroom about 19 ft. by 16 ft. with concealed lavatory basin and marble fireplace with gilt surround.

Bathroom adjoining with synthetic marble floor and pale blue bath, basin and W.C. *en suite*.

The Cinema or Ballroom is situated in the East Wing measures approx. 44 ft. by 16 ft., is of modern design with silvered ceiling and walls covered in cream quilted fabric, the South wall with built-in panelled mirrors. At the back, the parquet polished floor is raised with a bow-shaped gallery rail similarly covered in fabric from which access is gained to the projection room, fitted with two Simplex Photophone Projectors with R.C.A. Photophone High Fidelity sound equipment.

Beneath the Projection Room is a winding and Film Storage Room with exit to Grounds.

T H E A C C O M M O D A T I O N



WEST WING (*Ground Floor*). Billiard Room 27 ft by 21 ft., fitted with veined rouge marble mantel. Ladies' and Gentlemen's Cloakrooms with gilt and plastic-finished walls, each with tinted pedestal lavatory basin and W.C. Coat and other cupboards. Bedroom 19 ft. by 15 ft. with fireplace and concealed lavatory basin.

Bedroom 19 ft. by 12 ft., similarly fitted but with statuary marble mantel in rococo design.

Dressing Room, 15 ft. by 11 ft., fitted with lavatory basin.

Bathroom with pale yellow lavatory basin and W.C.

Nursery Maids' Room, fitted with sink, towel rail and cupboards.

Clothes Store with fitted cupboards and wash basin.

Store Cupboard with two Bathrooms.

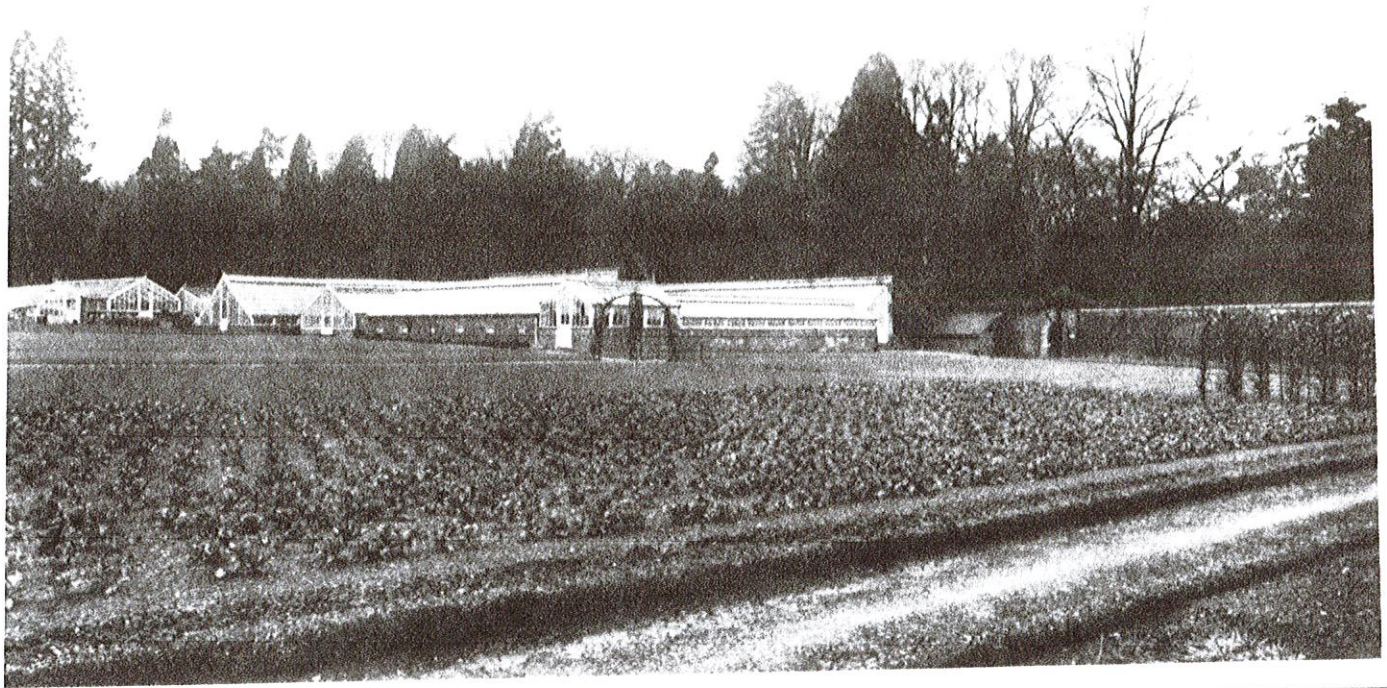
WEST WING (*First Floor*). Four well proportioned bedrooms, each with fitted concealed lavatory basins and hanging cupboards. Dressing Room, two Bathrooms, Hot Linen Cupboard, Housemaids' Room with sink and cupboard.

THE EAST WING. Comprises maids' Quarters namely:— Nine maids' bedrooms each with lavatory basin and radiator, Bathroom, Workroom, fitted basin, cupboards and radiator, Linen Room, fitted glass fronted cupboard, Mothproof cupboard. Secondary staircase to Lower Floors, Tank Room and Roof.

THE LOWER GROUND FLOOR houses the Domestic Offices and Male Staff Bedrooms as follows:—

Butlers' Pantry 16 ft. by 30 ft. with white Vitrolite walls, two Teak sinks, large cupboard and Silver safe by 'Milners.'

Kitchen 22 ft. by 20 ft. with walls of white Vitrolite and fitted large Esse cooker 10 ft. wide, with spacious cupboards. Service Hatch to Servery from which a service lift connects from the Ground Floor.



THE KITCHEN GARDEN SHOWING GLASSHOUSES

THE KITCHEN GARDEN

THE Walled Kitchen Garden extends to about $2\frac{1}{2}$ acres and has been particularly well maintained. There are Peach, Nectarine, Greengage, Pear and Plum Trees and Soft Fruit.

The ranges of Greenhouses are also in good condition and include vinery, melon house, tomato house and chrysanthemum house, extending in all to over 8,000 sq. ft. There are in addition numerous garden frames. The Boilers of the greenhouses are stoked by Automatic Fireman Feeders.

Adjoining the Kitchen Garden is a Cottage or Bothy with 6 rooms and bath, also Cottage with 7 rooms and bath, Cottage with 4 rooms and bath, and another with 3 rooms.



THE GARAGE BLOCK, SHOWING CLOCK TOWER

ALTHOUGH the Mansion is well-secluded, the property is bounded on all sides by Highways and if it was desired at some time to develop part of the Estate, at least 50 acres could be used for this purpose without spoiling the view from the House. This would give three-quarters of a mile of main road frontage and if the South Drive was sacrificed development could take place for approximately half a mile on each side of this drive.

Sunningdale and Swanley Forest and Wentworth Golf Courses are within easy reach and Hunting can be had with the Garth Hunt.