

16 Beech Court



Two bedroom apartment

A third floor, two bedroom apartment served by lift in Beech Court, adjacent to the main house facilities.

The apartment has a wide entrance hall, dual aspect lounge/dining room with patio door to a balcony, fitted kitchen with integrated stainless-steel appliances and a dishwasher, dual aspect master bedroom and shower room with large walk-in shower.

The apartment comes with allocated parking and access to the four acres of landscaped communal gardens and grounds.

Property specifications

- Balcony from the lounge
- Dual aspect master bedroom
- Guest bedroom with Juliette balcony
- Views over the landscaped gardens
- Lift access

Guide Price: £400,000 (other fees apply)

Monthly management fee £898.47

Annual ground rent £100

Council Tax Band C

Viewing by appointment with the sales office.

Audley Willicombe Park

01892 457002 willicombesales@audleyvillages.co.uk

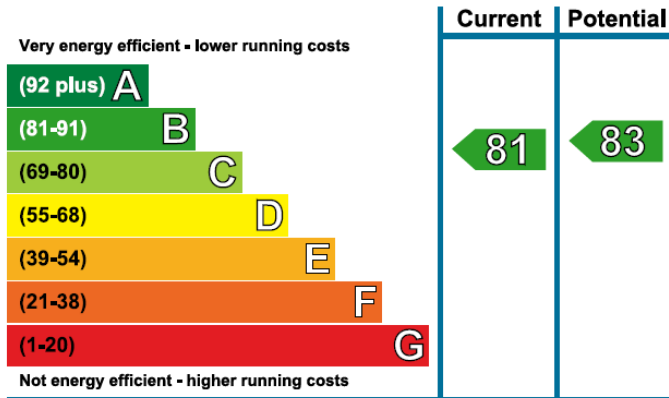
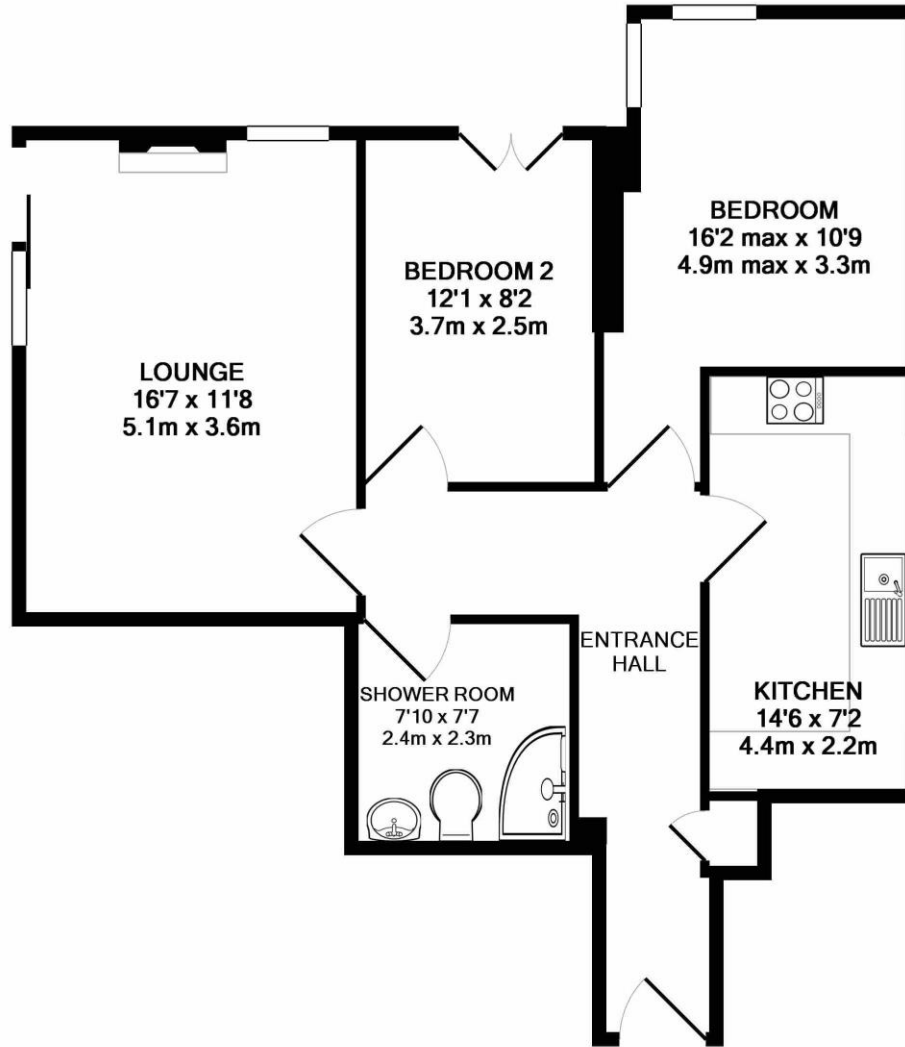


16 Beech Court

Measurements	Metric (m)	Imperial (ft)
Lounge/Diner	5.1m x 3.6m	16'7" x 11'8"
Kitchen	4.4m x 2.2m	14'6" x 7'2"
Master Bedroom	4.9m x 3.3m	16'2" x 10'9"
Bedroom Two	3.7m x 2.5m	12'1" x 8'2"

Total Sq. Ft: 900

Built in wardrobes in bedrooms have not been included in the overall dimensions. Maximum measurements shown.



These pages are intended for marketing purposes only. Designs vary according to plot and all details should be checked at the Sales office. May 2021

