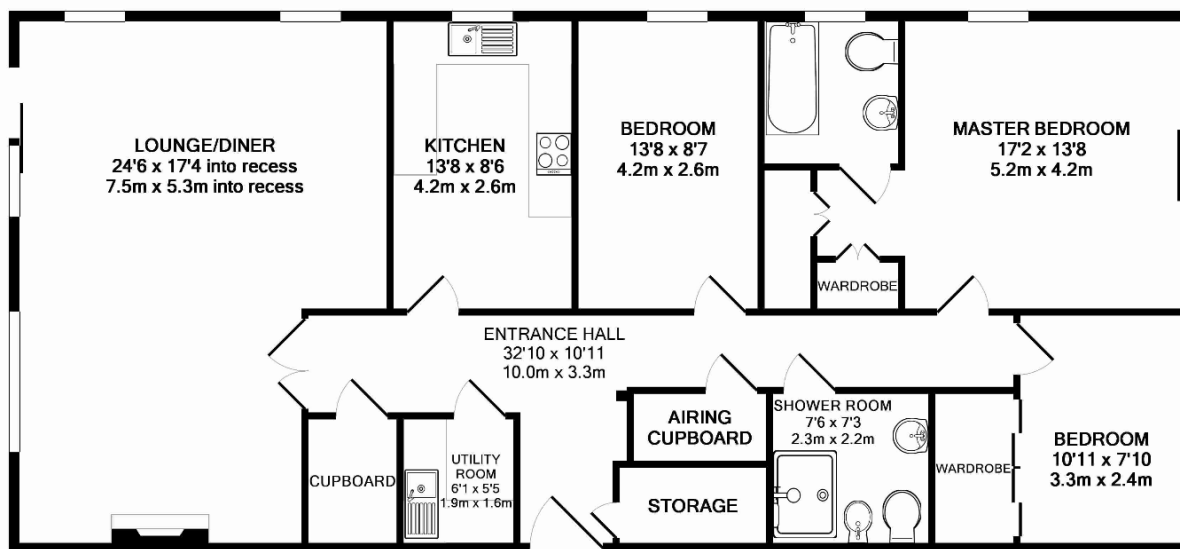
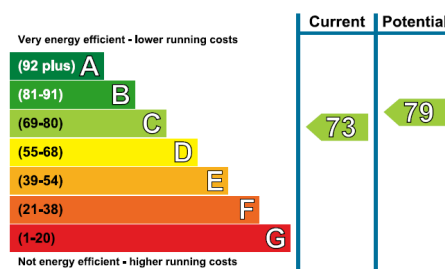


Audley Willicombe Park

24 Beech Court
Three bedroom pre-owned penthouse



| Internal Measurements | Metric (m) | Imperial (ft) |
|-----------------------|-------------|----------------|
| Lounge/Diner | 7.5m x 5.3m | 24'6" x 17'4" |
| Kitchen | 4.2m x 2.6m | 13'8" x 8'6" |
| Master Bedroom | 5.2m x 4.2m | 17'2" x 13'8" |
| Bedroom Two | 4.2m x 2.6m | 13'8" x 8'6" |
| Bedroom Three | 3.3m x 2.4m | 10'11" x 7'10" |
| Total Sq.Ft 1388 | | |



Audley Willicombe Park
Willicombe House, Royal Tunbridge Wells, Kent TN2 3UU
01892 457 002 willicombesales@audleyvillages.co.uk

Built in wardrobes in bedrooms have not been included in the overall dimensions.
Maximum measurements shown. These pages are intended for marketing purposes only.
Designs vary according to plot and all details should be checked at the Sales office.
April 2019

Audley Willicombe Park

24 Beech Court
Three bedroom pre-owned penthouse



Three bedroom penthouse



A delightful three bedroom penthouse with charming views over the landscaped village gardens. The property has a spacious master bedroom with fitted wardrobes and an en suite bathroom. There are two guest bedrooms and a separate shower room off of the hallway. The showpieces of the property are the two separate balconies offering north and south-facing views.



Property specifications

- Penthouse apartment with views over the landscaped gardens of Willicombe Park
- Master bedroom with fitted wardrobes and an en suite bathroom
- Two separate balconies offering north and south-facing views
- Two guest bedrooms
- Lift access to property



Guide Price: £699,500 (other fees apply)

Monthly management fee £920.97
Annual ground rent £100

Viewing by appointment with the sales office.

Audley Willicombe Park
Willicombe House, Royal Tunbridge Wells, Kent TN2 3UU
01892 457 002 willicombesales@audleyvillages.co.uk

