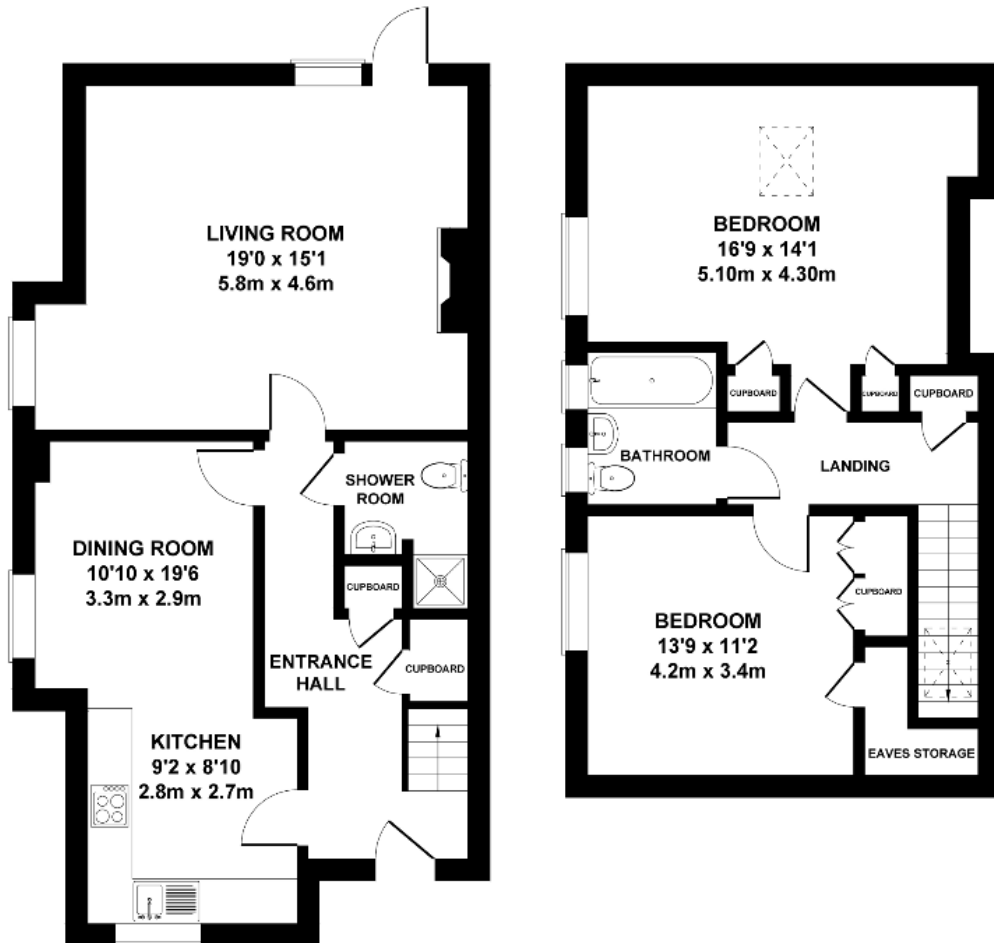


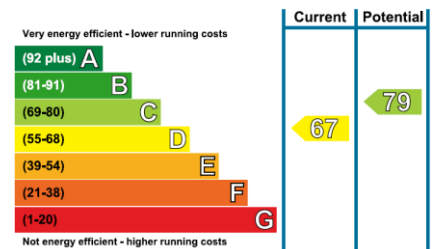
# Audley Willicombe Park

1 Willicombe Park

Two bedroom 'pre-owned' semi-detached cottage



Internal Measurements	Metric (m)	Imperial (ft)
Living Room	5.8m x 4.6m	19'0" x 15'1"
Dinning Room	3.3m x 2.9m	10'10" x 19'6"
Kitchen	2.8m x 2.7m	9'2" x 8'10"
Master Bedroom	5.1m x 4.3m	16'9" x 14'1"
Bedroom 2	4.2m x 3.4m	13'9" x 11'2"
Total Sq.Ft 1310		



Audley Willicombe Park  
 Willicombe House, Royal Tunbridge Wells, Kent TN2 3UU  
 01892 457 002 willicombesales@audleyvillages.co.uk

Built in wardrobes in bedrooms have not been included in the overall dimensions.  
 Maximum measurements shown. These pages are intended for marketing purposes only.  
 Designs vary according to plot and all details should be checked at the Sales office.  
 July 2020

# Audley Willicombe Park

1 Willicombe Park

Two bedroom 'pre-owned' semi-detached cottage



## Two bedroom cottage

This delightful two bedroom cottage enjoys a spacious living/dining room that offers direct access to the private enclosed garden. The property has a modern kitchen with integrated appliances, a downstairs shower room, an upstairs family bathroom and good storage facilities throughout. There are two well-appointed bedrooms including the large master bedroom that benefits from fitted wardrobes.

### Property specifications

- A recently refurbished two bedroom cottage
- Private enclosed garden
- Master bedroom with fitted wardrobes
- Guest bedroom and family bathroom
- Recently refurbished throughout
- Allocated parking
- Vacant possession

**£450,000** (other fees apply)

Monthly management fee £798.14

Annual ground rent £100

Viewing by appointment with the sales office.

Audley Willicombe Park  
Willicombe House, Royal Tunbridge Wells, Kent TN2 3UU  
01892 457 002 [willicombesales@audleyvillages.co.uk](mailto:willicombesales@audleyvillages.co.uk)

