

35 Willicombe Park



## 35 Willicombe Park

Recently refurbished in the last year, this spacious one-bedroom maisonette is located conveniently close to the main house with all the facilities it offers. Parking is nearby. During the refurbishment a new central heating boiler was installed. There is a thru-lounge-diner with windows both front and rear with a glazed door leading to a pleasant outside terrace.

### Property specification

- Spacious main bedroom with en suite shower
- Separate kitchen with integrated appliances including fridge, freezer, oven and dishwasher
- Family bathroom off hallway
- Spacious through lounge-diner
- Newly fitted central heating boiler
- Free parking nearby

£310,000 (other fees apply)

Monthly management fee: £998.23

Annual ground rent: £100

Council Tax: D

A deferred management charge applies to this property, please ask the sales team for more information.

Viewing by appointment with the sales office.

01892 457 002

[willicombesales@audleyvillages.co.uk](mailto:willicombesales@audleyvillages.co.uk)



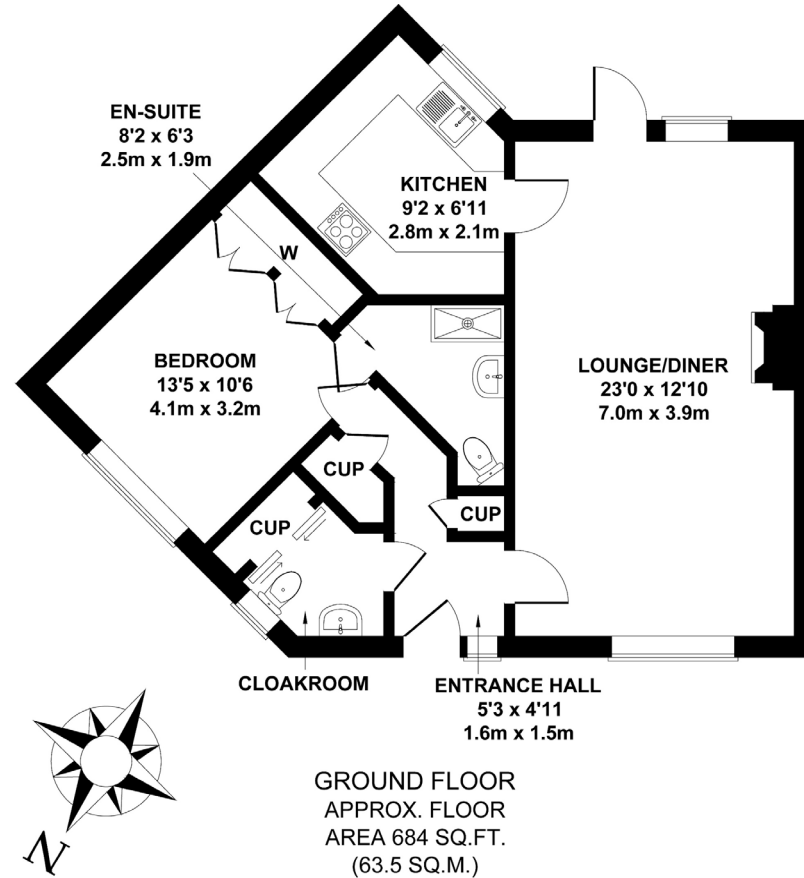
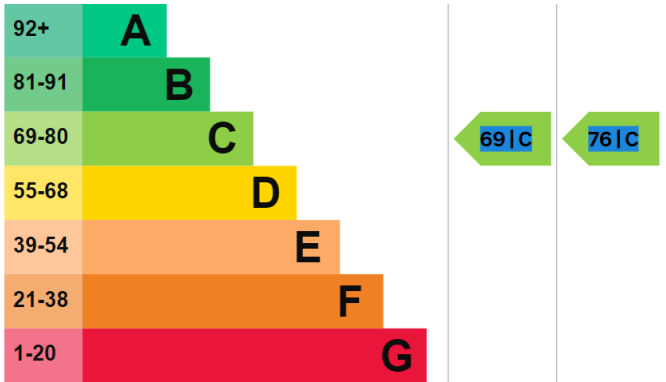
# 35 Willicombe Park

## Internal Measurements

	Metric (m)	Imperial (ft)
Main bedroom	4.1 x 3.2	13'5" x 10'6"
Kitchen	2.8 x 2.1	9'2" x 6'11"
Lounge-diner	7.0 x 3.9	23'0" x 12'10"

Total Sq. Ft: 684

Built in wardrobes in bedrooms have not been included in the overall dimensions. Maximum measurements shown.



Furniture shown to illustrate possible room layouts and not included in sale. Designs vary according to plot and all details should be checked at the Sales office. April 2023

