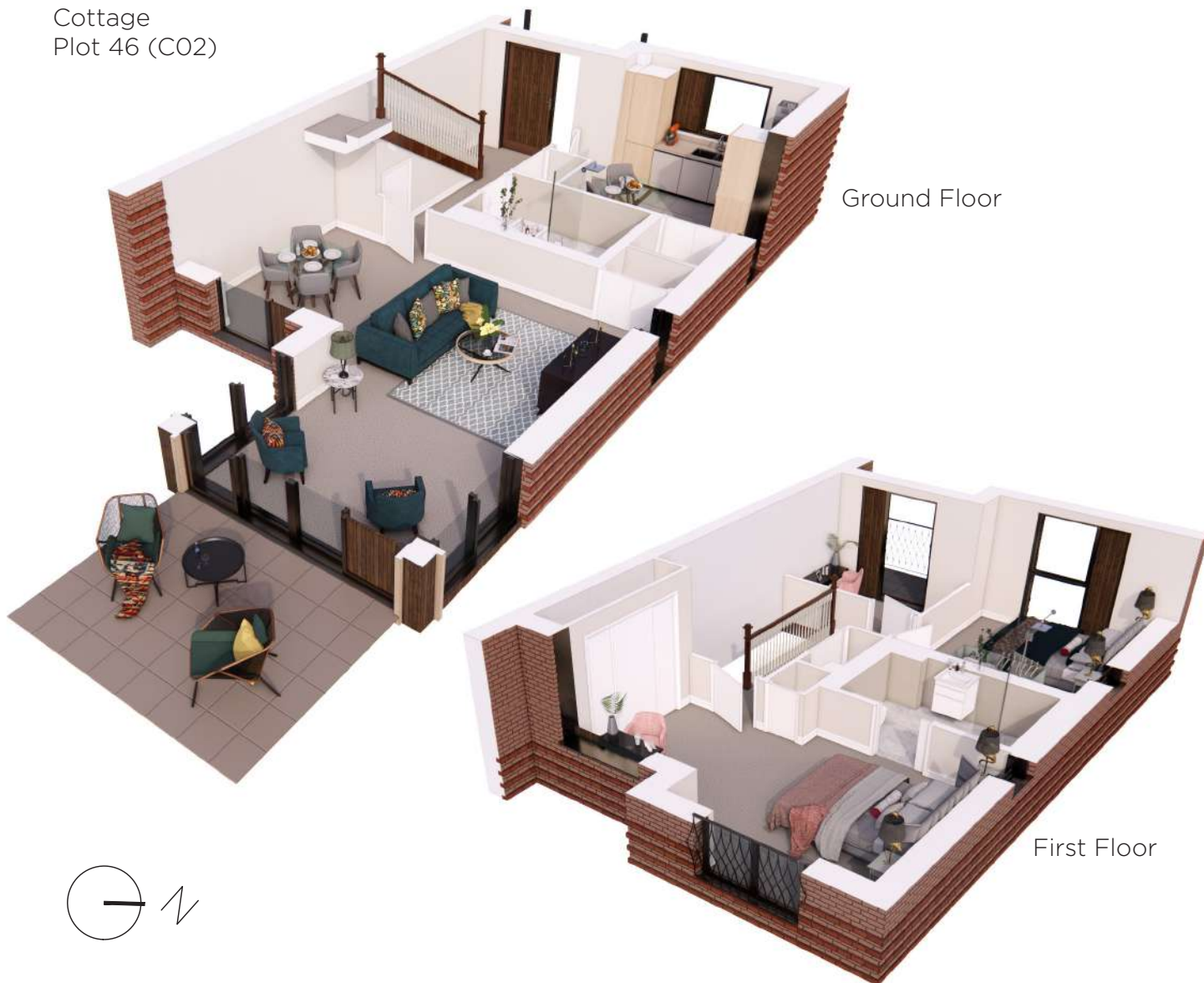


Audley Sunningdale Park

Block C
Cottage
Plot 46 (C02)



Internal Measurements

Living / Dining Room
Kitchen
Orangery
Master bedroom
Bedroom 2
Study

Metric (m)

6.42 x 3.63
4.08 x 3.15
3.36 x 2.87
5.72 x 3.82
3.69 x 3.36
2.97 x 1.80

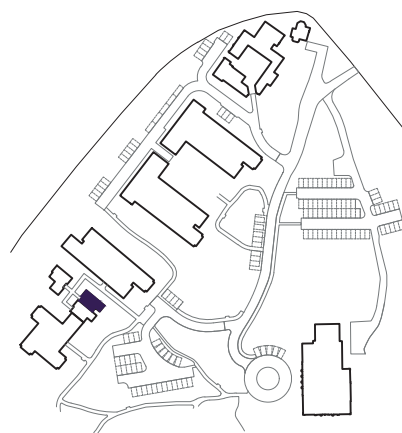
Imperial (ft)

21'1" x 11'11"
13'4" x 10'4"
11'0" x 9'5"
18'9" x 12'6"
12'1" x 11'0"
9'9" x 5'11"

Terrace (approx.)
Balcony (approx.)

3.51 x 2.85
2.60 x 1.15

11'6" x 9'4"
8'6" x 3'9"



Audley Sunningdale Park
Silwood Road,
Ascot, Berkshire SL5 0QD
01344 859 239
www.audleyvillages.co.uk

These floor plans are illustrative and for marketing purposes only. Maximum measurements are shown with longer dimensions quoted first. Dimensions are quoted for the main area of the room only. Built-in wardrobes not included in the overall room dimensions. Furniture shown to illustrate possible room layouts and not included in sale. Designs vary according to plot. All details should be checked at the Sales Office.
06/05/2020

025011



Audley Sunningdale Park

Block C
Cottage
Plot 46 (C02)



2 bedroom cottage

One of only nine cottages in the village, this semi-detached house is split over two floors with two double bedrooms and a study.

The master bedroom has a luxury Villeroy & Boch en suite shower room with a space-saving sliding door, double built-in wardrobes and has a vaulted ceiling with full-height windows and a Juliet balcony.

The large fully equipped SieMatic kitchen has Corian worktops, integrated appliances and a walk-in store cupboard.

The study, on the first floor, has a built-in cupboard and access to a balcony.

The unique living/dining room has an orangery, with floor to ceiling windows on three sides and a full width glass lantern roof, leading to a south-east facing terrace.

Property specifications:

- Semi-detached house with vaulted ceilings in master bedroom
- Unique orangery living room
- Luxury Villeroy & Boch en suite and bathroom
- Additional downstairs shower room and WC
- One of only nine cottages in the village

Audley Sunningdale Park
Silwood Road, Ascot, Berkshire SL5 0QD
01344 859 239
www.audleyvillages.co.uk

