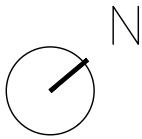
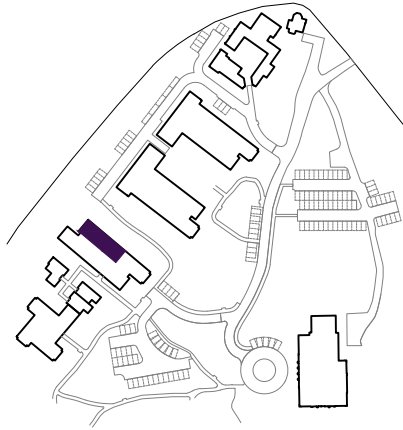


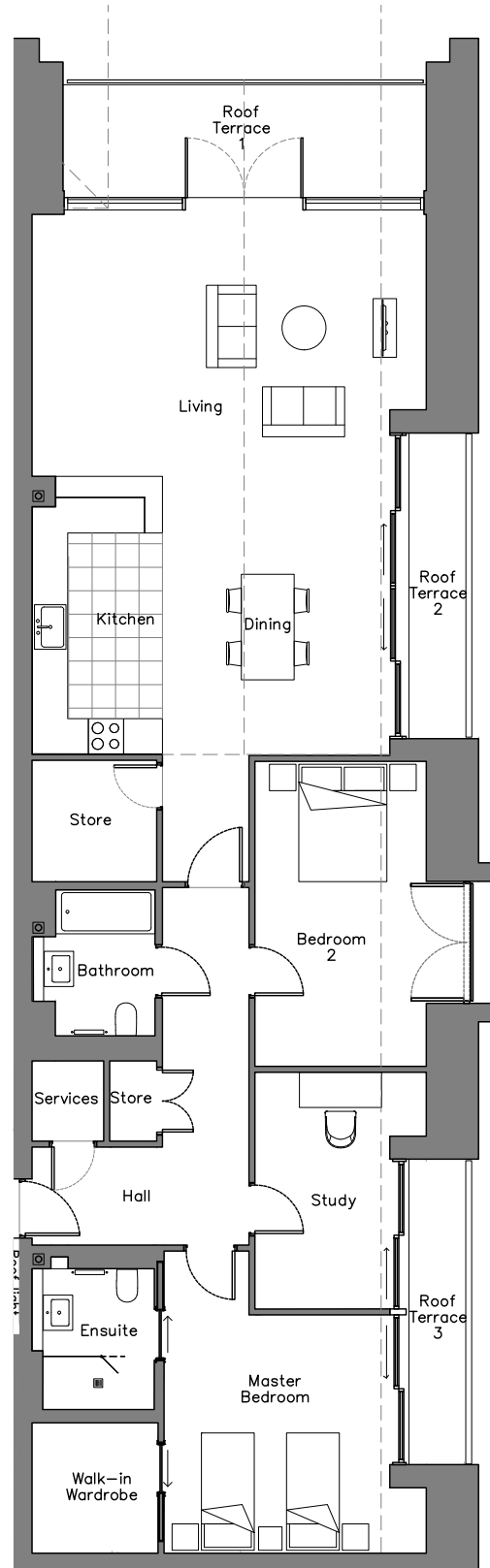
# Audley Sunningdale Park

Block B  
Third Floor Apartment  
Plot 43 (B20)



## Internal Measurements

	Metric (m)	Imperial (ft)
Living Room	6.72 x 4.47	22'0" x 14'8"
Dining Room	4.76 x 3.88	15'7" x 12'8"
Kitchen	4.73 x 2.23	15'6" x 7'4"
Master bedroom	4.07 x 3.85	13'4" x 12'8"
Bedroom 2	5.20 x 2.92	17'1" x 9'7"
Study	4.04 x 2.30	13'3" x 7'7"
Terrace 1 (approx.)	6.19 x 1.93	20'4" x 6'4"
Terrace 2 (approx.)	5.19 x 0.97	17'0" x 3'2"
Terrace 3 (approx.)	5.19 x 0.97	17'0" x 3'2"



Audley Sunningdale Park  
Silwood Road,  
Ascot, Berkshire SL5 0QD  
01344 859 239  
[www.audleyvillages.co.uk](http://www.audleyvillages.co.uk)

These floor plans are illustrative and for marketing purposes only. Maximum measurements are shown with longer dimensions quoted first. Dimensions are quoted for the main area of the room only. Built-in wardrobes not included in the overall room dimensions. Furniture shown to illustrate possible room layouts and not included in sale. Designs vary according to plot. All details should be checked at the Sales Office.

DRAFT 19/05/2020

