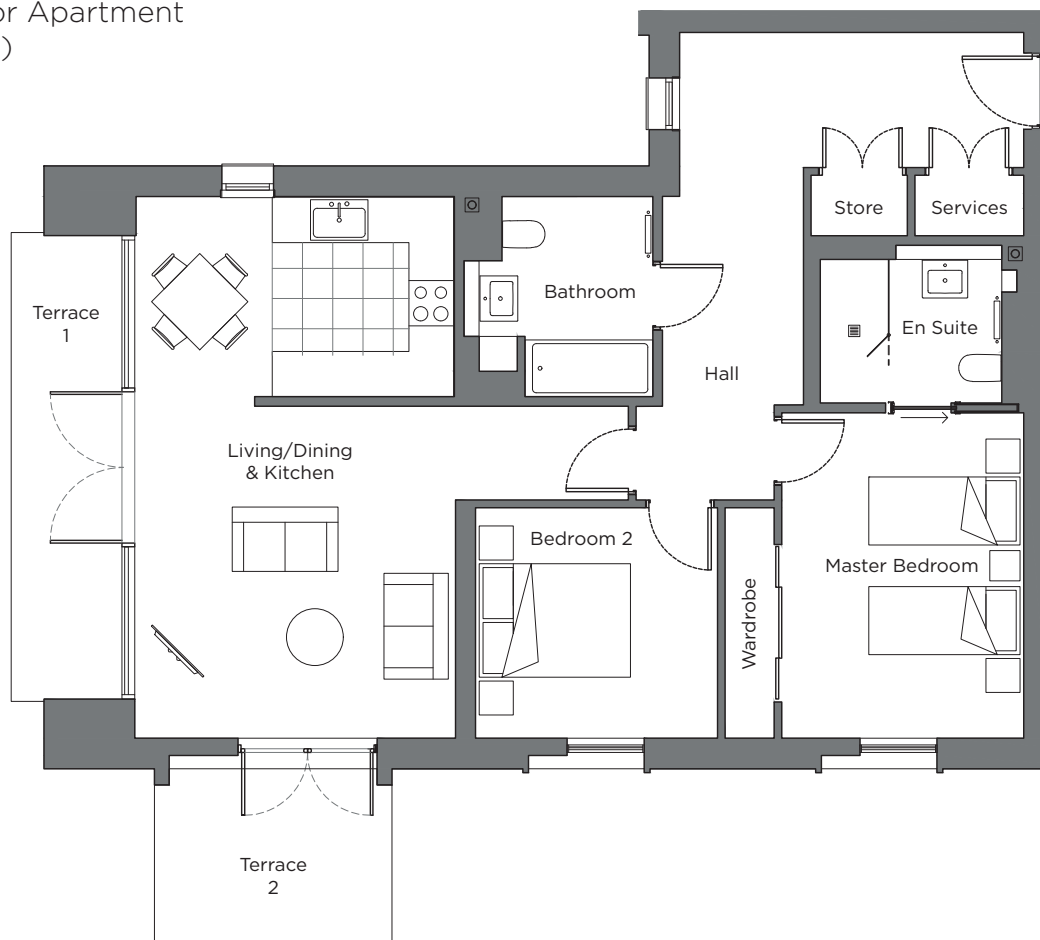
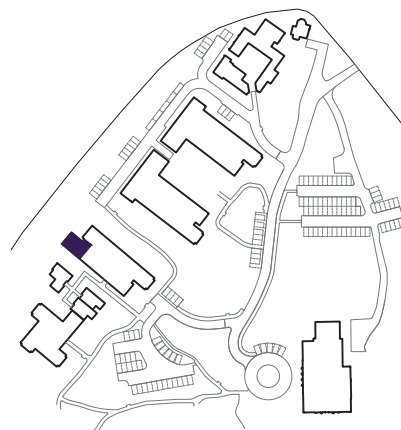


Audley Sunningdale Park

Block B
Ground Floor Apartment
Plot 24 (B01)



Internal Measurements	Metric (m)	Imperial (ft)
Living / Dining Room & Kitchen	7.17 x 4.24	23'6" x 13'11"
Master bedroom	4.31 x 3.20	14'1" x 10'6"
Bedroom 2	3.20 x 3.05	10'6" x 10'0"
Terrace 1 (approx.)	6.19 x 1.85	20'4" x 6'1"
Terrace 2 (approx.)	3.14 x 2.32	10'4" x 7'7"



Audley Sunningdale Park
Silwood Road,
Ascot, Berkshire SL5 0QD
01344 859 239
www.audleyvillages.co.uk

These floor plans are illustrative and for marketing purposes only. Maximum measurements are shown with longer dimensions quoted first. Dimensions are quoted for the main area of the room only. Built-in wardrobes not included in the overall room dimensions. Furniture shown to illustrate possible room layouts and not included in sale. Designs vary according to plot. All details should be checked at the Sales Office.
06/05/2020

025011



Audley Sunningdale Park

Block B
Ground Floor Apartment
Plot 24 (B01)



2 bedroom, ground floor apartment

The master bedroom in this ground floor, two double bedroom apartment has an en suite shower room and a double built-in wardrobe.

The dual-aspect open plan kitchen/living room has space for a dining table and double doors opening on to two terraces, one of which is south-west facing.

The fully equipped SieMatic kitchen comes with Corian worktops and integrated appliances.

Property specifications:

- Two terraces with step free access from the living room
- Luxury Villeroy & Boch bathroom and en suite shower room
- Master bedroom with built-in wardrobe
- Carpeted and decorated throughout



Audley Sunningdale Park
Silwood Road,
Ascot, Berkshire SL5 0QD
01344 859 239
www.audleyvillages.co.uk

