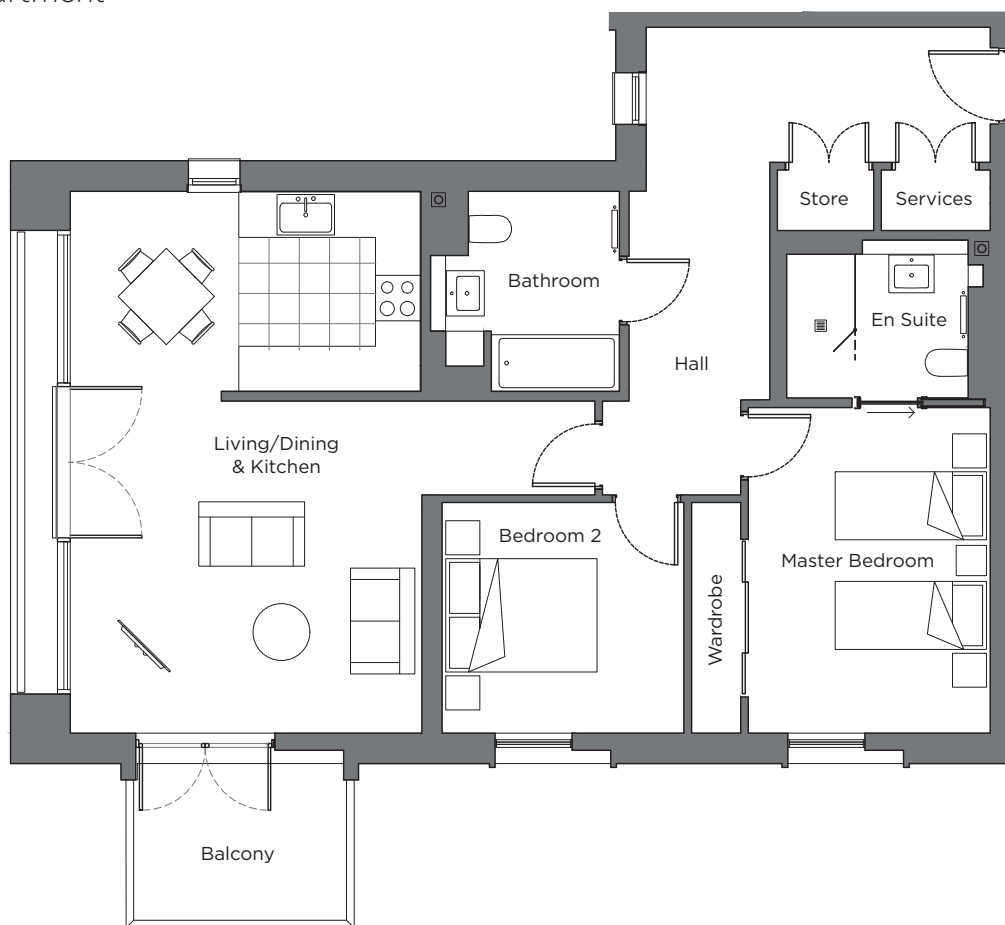
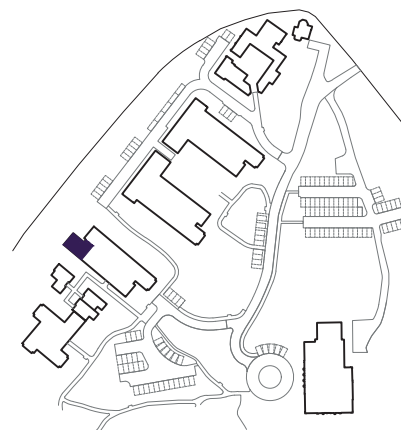


# Audley Sunningdale Park

Block B  
First Floor Apartment  
Plot 30 (B07)



| Internal Measurements          | Metric (m)  | Imperial (ft) |
|--------------------------------|-------------|---------------|
| Living / Dining Room & Kitchen | 7.17 x 4.61 | 23'6" x 15'1" |
| Master bedroom                 | 4.31 x 3.20 | 14'1" x 10'6" |
| Bedroom 2                      | 3.20 x 3.05 | 10'6" x 10'0" |
| Balcony (approx.)              | 2.82 x 2.07 | 9'3" x 6'10"  |



Audley Sunningdale Park  
Silwood Road,  
Ascot, Berkshire SL5 0QD  
01344 859 239  
[www.audleyvillages.co.uk](http://www.audleyvillages.co.uk)

These floor plans are illustrative and for marketing purposes only. Maximum measurements are shown with longer dimensions quoted first. Dimensions are quoted for the main area of the room only. Built-in wardrobes not included in the overall room dimensions. Furniture shown to illustrate possible room layouts and not included in sale. Designs vary according to plot. All details should be checked at the Sales Office.  
06/05/2020

025011



# Audley Sunningdale Park

Block B  
First Floor Apartment  
Plot 30 (B07)



## 2 bedroom, first floor apartment

The master bedroom in this first floor, two double bedroom apartment has an en suite shower room and a double built-in wardrobe. The property also has a separate guest bathroom.

The triple-aspect open plan kitchen/living room has space for a dining table and has both a Juliet balcony and double doors leading onto a south-west facing balcony.

The fully equipped SieMatic kitchen comes with Corian worktops and integrated appliances.

Property specifications:

- South-west facing balcony
- Master bedroom with built-in wardrobe
- Luxury Villeroy & Boch bathroom and en suite shower room
- Step-free lift access



Audley Sunningdale Park  
Silwood Road,  
Ascot, Berkshire SL5 0QD  
01344 859 239  
[www.audleyvillages.co.uk](http://www.audleyvillages.co.uk)

