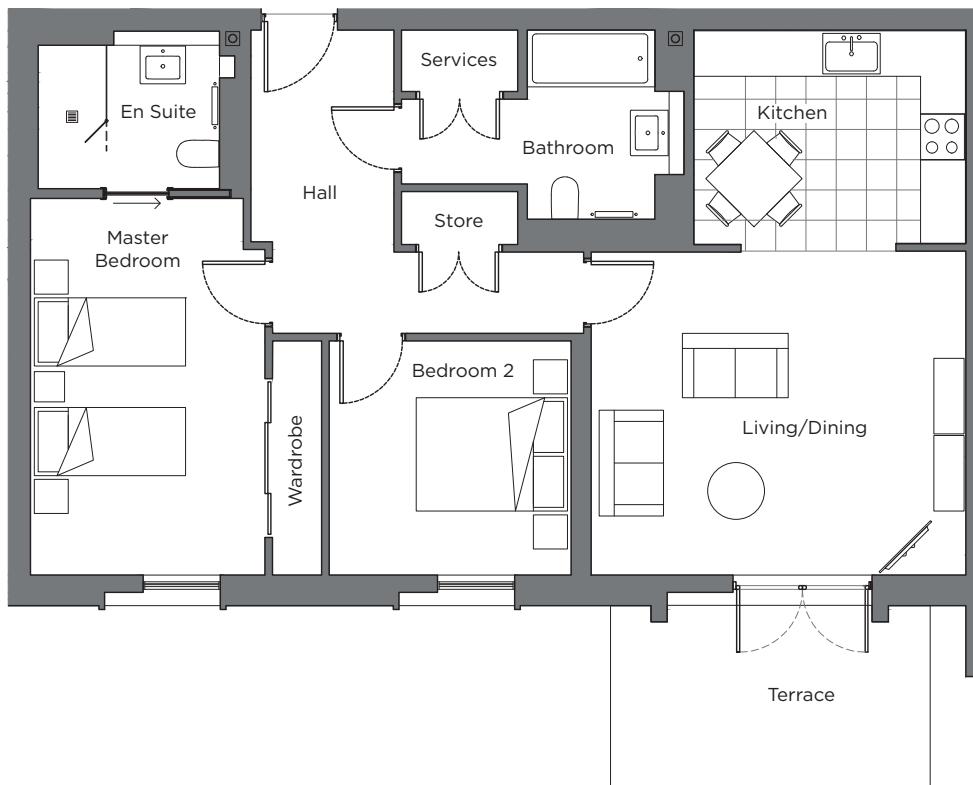
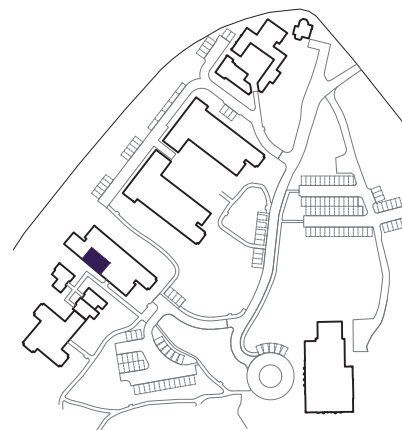


Audley Sunningdale Park

Block B
Ground Floor Apartment
Plot 25 (B02)



Internal Measurements	Metric (m)	Imperial (ft)
Living / Dining Room	4.96 x 4.29	16'3" x 13'10"
Kitchen	3.60 x 2.83	11'10" x 9'3"
Master bedroom	5.11 x 3.10	16'9" x 10'2"
Bedroom 2	3.20 x 3.10	10'6" x 10'2"
Terrace (approx.)	4.20 x 2.62	13'9" x 8'7"



Audley Sunningdale Park
Silwood Road,
Ascot, Berkshire SL5 0QD
01344 859 239
www.audleyvillages.co.uk

These floor plans are illustrative and for marketing purposes only. Maximum measurements are shown with longer dimensions quoted first. Dimensions are quoted for the main area of the room only. Built-in wardrobes not included in the overall room dimensions. Furniture shown to illustrate possible room layouts and not included in sale. Designs vary according to plot. All details should be checked at the Sales Office.
06/05/2020

025011



Audley Sunningdale Park

Block B
Ground Floor Apartment
Plot 25 (B02)



2 bedroom, ground floor apartment

This ground floor apartment has two double bedrooms. The master room has an en suite shower room and a double built-in wardrobe.

The kitchen has door free access from the living room, has space for a dining table and comes with Corian worktops and integrated appliances.

The living room leads out to south-west facing terrace with space for a table and chairs.

Property specifications:

- Terrace with step free access from the living room
- Luxury Villeroy & Boch guest bathroom and en suite shower room
- Master bedroom with built-in wardrobe
- Carpeted and decorated throughout



Audley Sunningdale Park
Silwood Road,
Ascot, Berkshire SL5 0QD
01344 859 239
www.audleyvillages.co.uk

