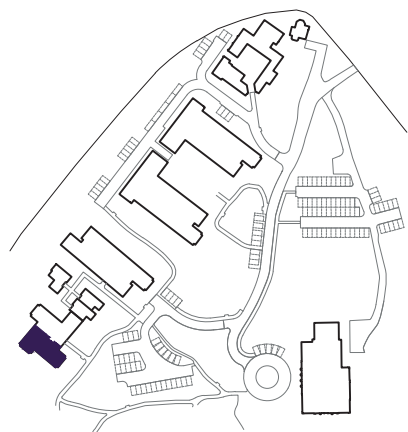
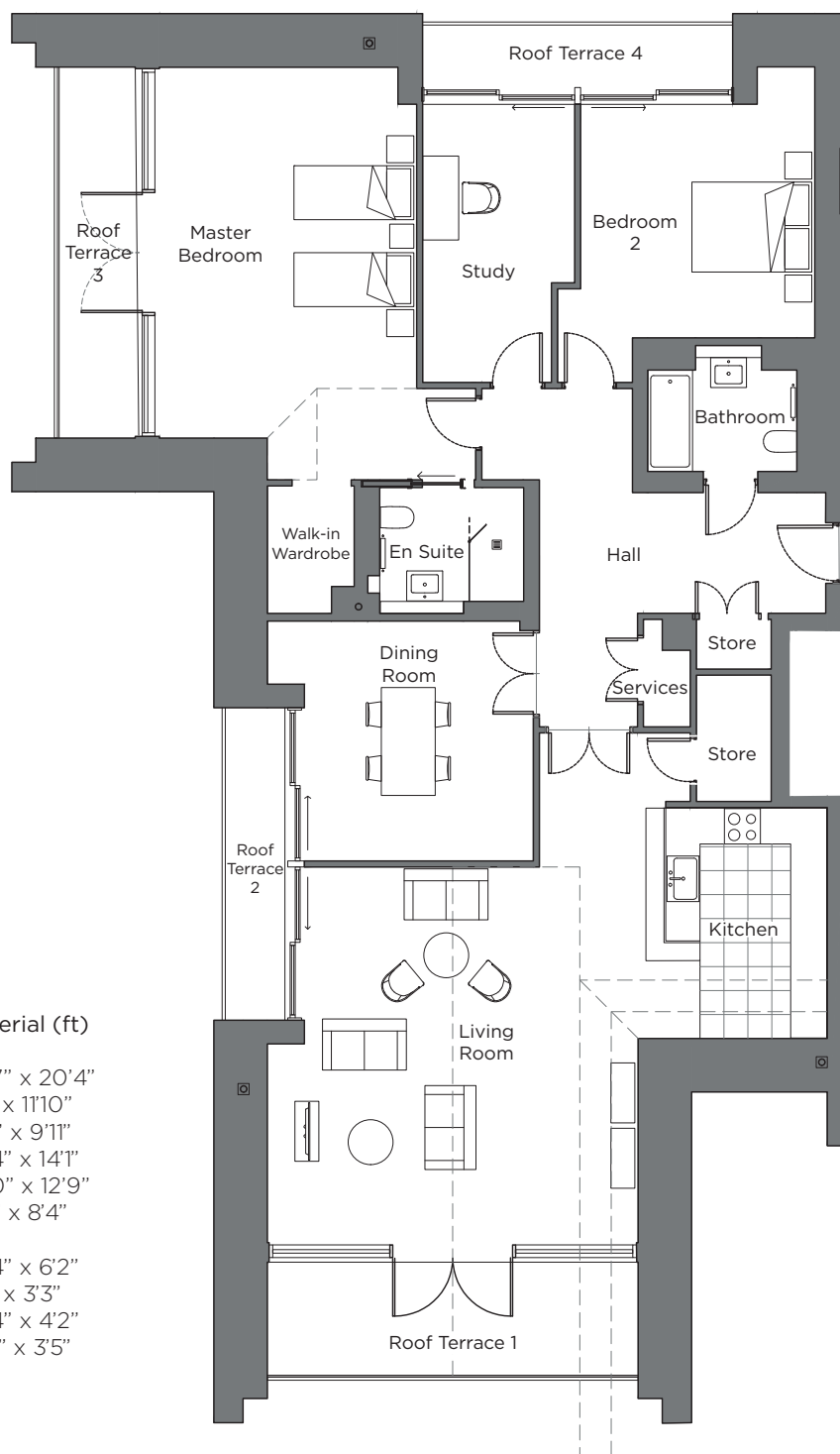


Audley Sunningdale Park

Block A
Third Floor Apartment
Plot 22 (A13)



Internal Measurements	Metric (m)	Imperial (ft)
Living Room	6.27 x 6.19	20'7" x 20'4"
Dining Room	4.00 x 3.60	13'1" x 11'10"
Kitchen	3.85 x 3.02	12'8" x 9'11"
Master bedroom	6.19 x 4.30	20'4" x 14'1"
Bedroom 2	3.91 x 3.90	12'10" x 12'9"
Study	4.64 x 2.54	15'3" x 8'4"
Roof Terrace 1	6.19 x 1.89	20'4" x 6'2"
Roof Terrace 2	5.21 x 0.95	17'1" x 3'3"
Roof Terrace 3	6.19 x 1.27	20'4" x 4'2"
Roof Terrace 4	5.18 x 1.04	17'0" x 3'5"



Audley Sunningdale Park
Silwood Road,
Ascot, Berkshire SL5 0QD
01344 859 239
www.audleyvillages.co.uk

These floor plans are illustrative and for marketing purposes only. Maximum measurements are shown with longer dimensions quoted first. Dimensions are quoted for the main area of the room only. Built-in wardrobes not included in the overall room dimensions. Furniture shown to illustrate possible room layouts and not included in sale. Designs vary according to plot. All details should be checked at the Sales Office.
06/05/2020

025011



Audley Sunningdale Park

Block A
Third Floor Apartment
Plot 22 (A13)



2 bedroom, third floor apartment

This penthouse apartment is one of the largest in the village at 1,676 sq. ft. and has two double bedrooms and a study.

The property has four separate roof terraces on three sides of the building, accessed via the bedrooms, study, dining room and living room.

The spacious master bedroom has one of the two south-facing roof terraces, en suite shower room and walk-in wardrobe, and there is a separate guest bathroom.

The property has a spacious living room with high vaulted ceilings and floor to ceiling windows, a walk-in cupboard and the fully equipped SieMatic kitchen comes with Corian worktops and integrated appliances.

Property specifications:

- Spacious penthouse apartment with study
- High vaulted ceiling in living room
- Four roof terraces
- Separate dining room
- Master bedroom with walk-in wardrobe

Audley Sunningdale Park
Silwood Road,
Ascot, Berkshire SL5 0QD
01344 859 239
www.audleyvillages.co.uk

