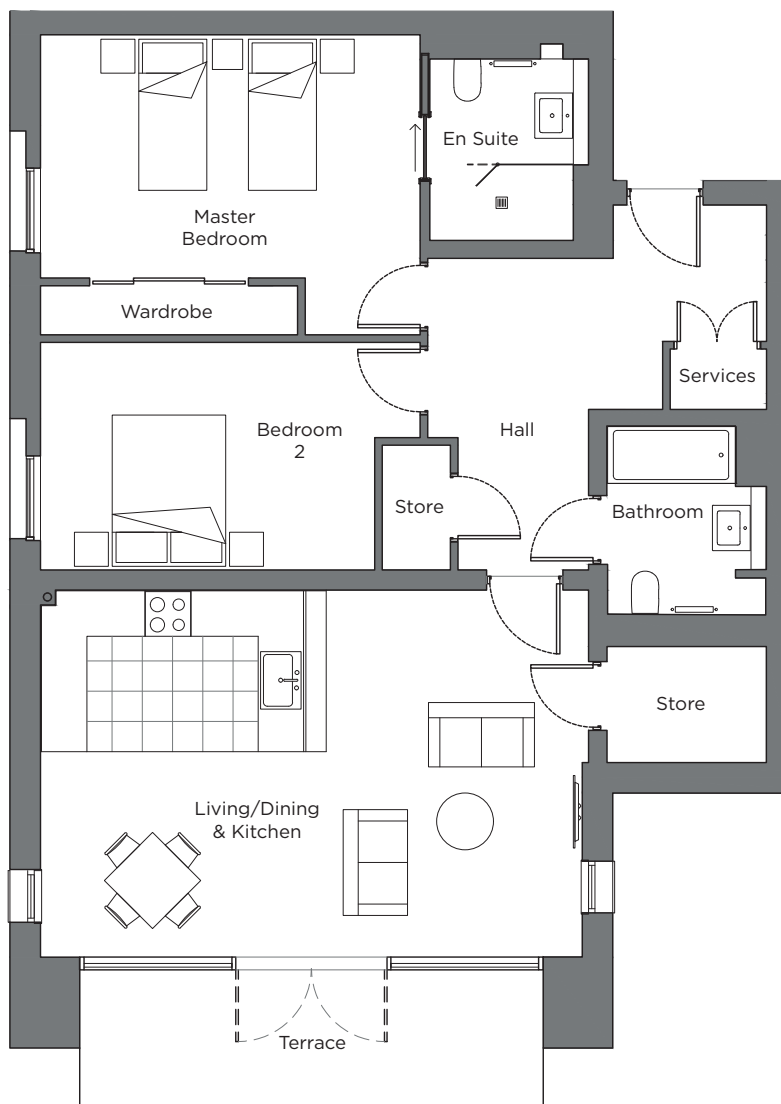
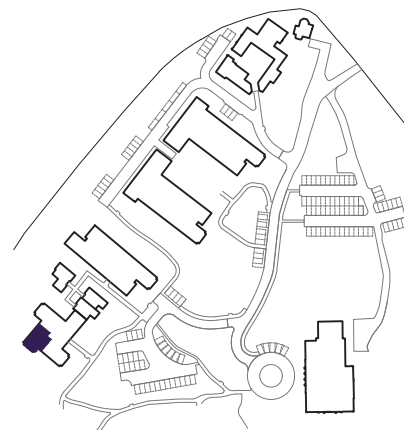


# Audley Sunningdale Park

Block A  
Ground Floor Apartment  
Plot 13 (A04)



| Internal Measurements          | Metric (m)  | Imperial (ft)  |
|--------------------------------|-------------|----------------|
| Living / Dining Room & Kitchen | 7.17 x 4.86 | 23'6" x 15'11" |
| Master bedroom                 | 5.03 x 3.22 | 16'6" x 10'7"  |
| Bedroom 2                      | 4.42 x 3.01 | 14'6" x 9'11"  |
| Terrace (approx.)              | 6.19 x 1.85 | 20'4" x 6'1"   |



Audley Sunningdale Park  
Silwood Road,  
Ascot, Berkshire SL5 0QD  
01344 859 239  
[www.audleyvillages.co.uk](http://www.audleyvillages.co.uk)

These floor plans are illustrative and for marketing purposes only. Maximum measurements are shown with longer dimensions quoted first. Dimensions are quoted for the main area of the room only. Built-in wardrobes not included in the overall room dimensions. Furniture shown to illustrate possible room layouts and not included in sale. Designs vary according to plot. All details should be checked at the Sales Office.  
06/05/2020

025011



# Audley Sunningdale Park

Block A  
Ground Floor Apartment  
Plot 13 (A04)



## 2 bedroom, ground floor apartment

A ground floor, two double bedroom apartment with an open plan kitchen/living room with doors opening on to a large south-west facing terrace.

The fully equipped SieMatic kitchen comes with Corian worktops and integrated appliances.

The master bedroom has an en suite shower room and double built-in wardrobes.

Property specifications:

- Walk-in store cupboard in the lounge
- Open plan kitchen/living room with dining area
- Luxury Villeroy & Boch bathrooms
- South-west facing terrace from the living/dining room

Audley Sunningdale Park  
Silwood Road,  
Ascot, Berkshire SL5 0QD  
01344 859 239  
[www.audleyvillages.co.uk](http://www.audleyvillages.co.uk)

