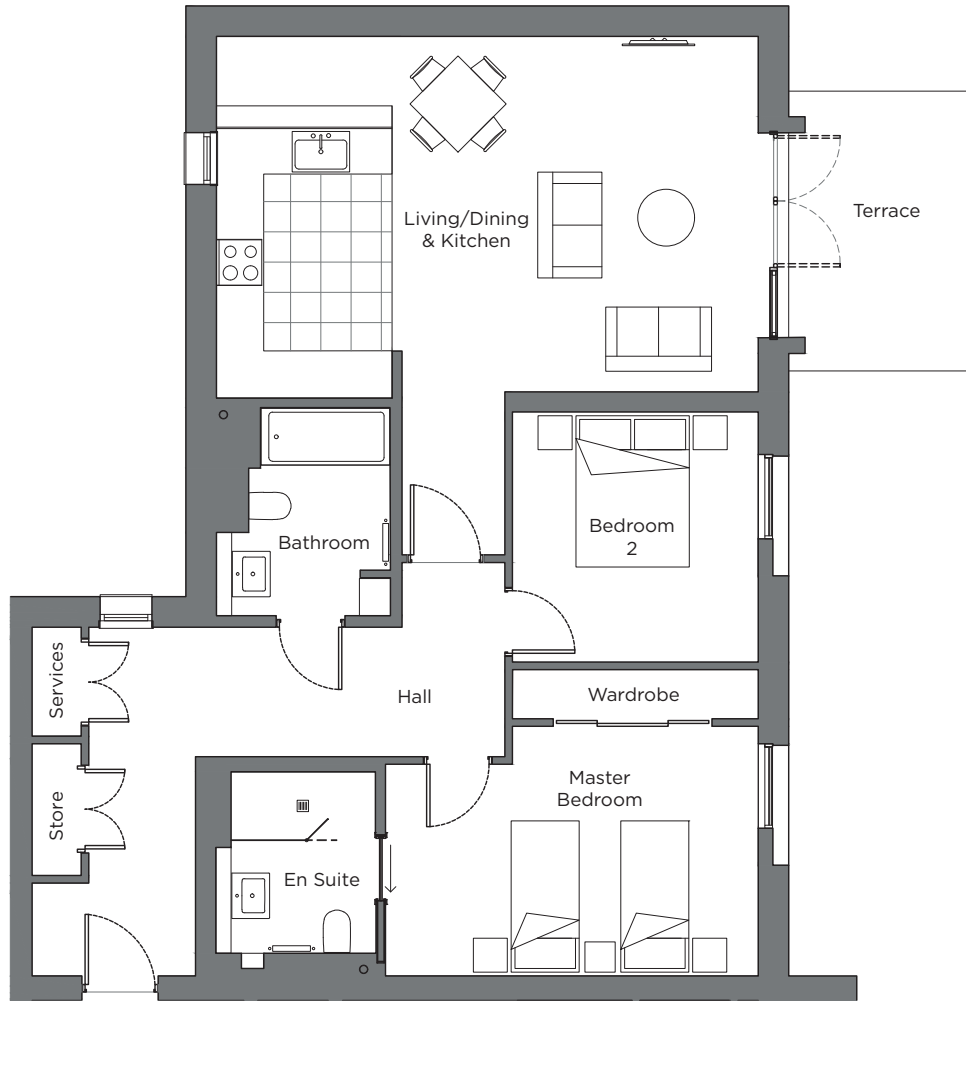
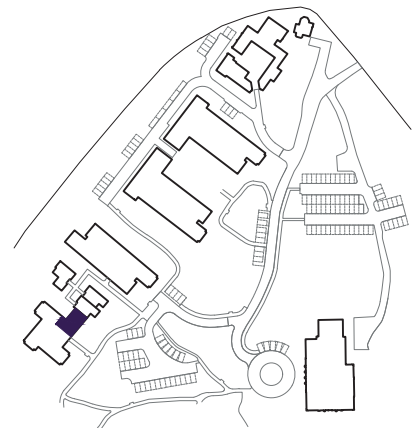


Audley Sunningdale Park

Block A
Ground Floor Apartment
Plot 11 (A02)



Internal Measurements	Metric (m)	Imperial (ft)
Living / Dining Room & Kitchen	7.17 x 4.7	23'6" x 5'5"
Master bedroom	4.93 x 3.3	16'2" x 10'10"
Bedroom 2	3.31 x 3.25	10'10" x 10'8"
Terrace (approx.)	3.7 x 2.42	12'2" x 7'11"



Audley Sunningdale Park
Silwood Road,
Ascot, Berkshire SL5 0QD
01344 859 239
www.audleyvillages.co.uk

These floor plans are illustrative and for marketing purposes only. Maximum measurements are shown with longer dimensions quoted first. Dimensions are quoted for the main area of the room only. Built-in wardrobes not included in the overall room dimensions. Furniture shown to illustrate possible room layouts and not included in sale. Designs vary according to plot. All details should be checked at the Sales Office.
06/05/2020

025011



Audley Sunningdale Park

Block A
Ground Floor Apartment
Plot 11 (A02)



2 bedroom, ground floor apartment

A ground floor, two double bedroom apartment with an open plan kitchen/living room with doors opening on to a south-east facing terrace.

The master bedroom has an en suite shower room with spacing-saving sliding door and double built-in wardrobe.

The fully equipped SieMatic kitchen comes with Corian worktops and integrated appliances.

Property specifications:

- Open plan kitchen/living room with dining area
- Luxury Villeroy & Boch bathrooms
- Terrace from the living/dining room
- Carpeted and decorated throughout

Audley Sunningdale Park
Silwood Road,
Ascot, Berkshire SL5 0QD
01344 859 239
www.audleyvillages.co.uk

