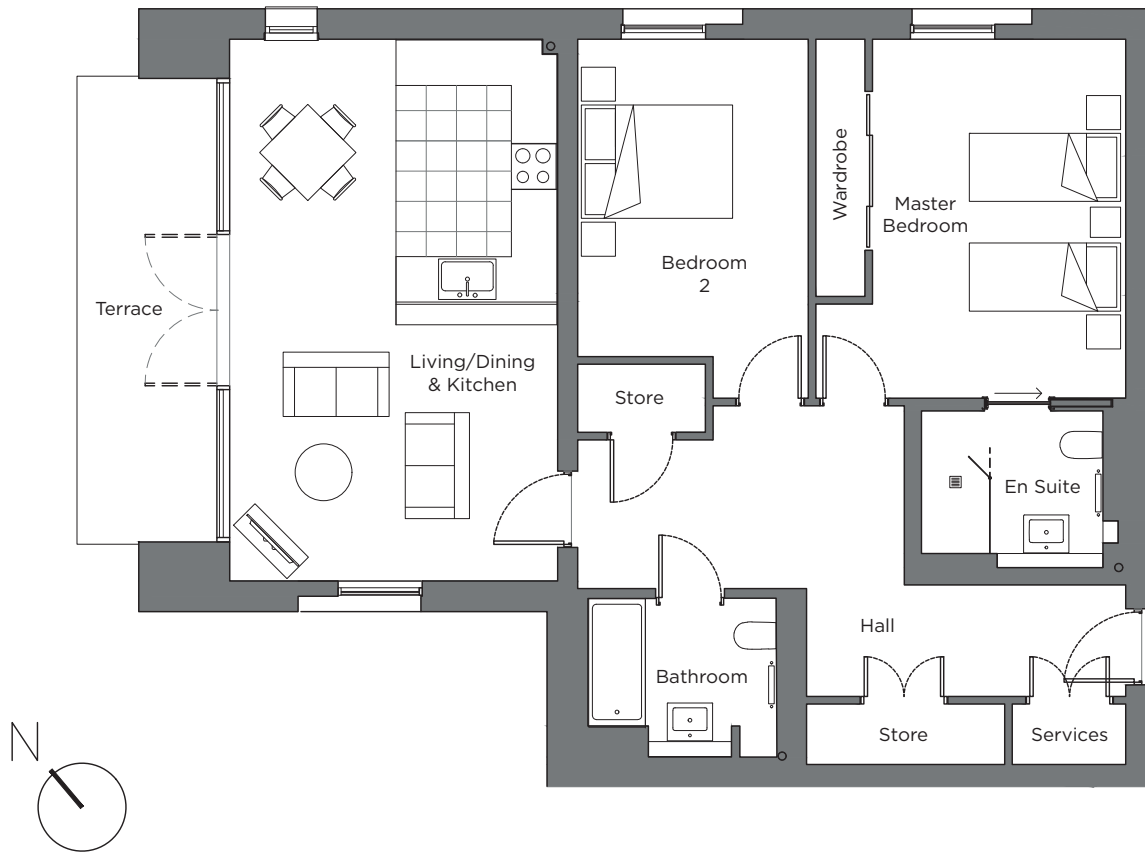
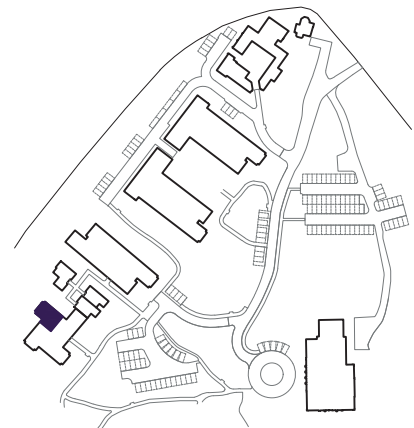


# Audley Sunningdale Park

Block A  
Ground Floor Apartment  
Plot 10 (A01)



Internal Measurements	Metric (m)	Imperial (ft)
Living / Dining Room & Kitchen	7.17 x 4.34	23'6" x 14'3"
Master bedroom	4.75 x 3.35	15'7" x 11'0"
Bedroom 2	4.18 x 3.05	13'9" x 10'0"
Terrace (approx.)	6.19 x 1.85	20'4" x 6'1"



Audley Sunningdale Park  
Silwood Road,  
Ascot, Berkshire SL5 0QD  
01344 859 239  
[www.audleyvillages.co.uk](http://www.audleyvillages.co.uk)

These floor plans are illustrative and for marketing purposes only. Maximum measurements are shown with longer dimensions quoted first. Dimensions are quoted for the main area of the room only. Built-in wardrobes not included in the overall room dimensions. Furniture shown to illustrate possible room layouts and not included in sale. Designs vary according to plot. All details should be checked at the Sales Office.  
06/05/2020

025011



# Audley Sunningdale Park

Block A  
Ground Floor Apartment  
Plot 10 (A01)



## 2 bedroom, ground floor apartment

A ground floor, two double bedroom apartment with an open plan kitchen/living room with doors opening on to a large terrace.

The master bedroom has an en suite shower room with spacing-saving sliding door and double built-in wardrobe.

The fully equipped SieMatic kitchen comes with Corian worktops and integrated appliances.

Property specifications:

- Open plan kitchen/living room with dining area
- Luxury Villeroy & Boch bathrooms
- Terrace from the living/dining room
- Carpeted and decorated throughout

Audley Sunningdale Park  
Silwood Road,  
Ascot, Berkshire SL5 0QD  
01344 859 239  
[www.audleyvillages.co.uk](http://www.audleyvillages.co.uk)

