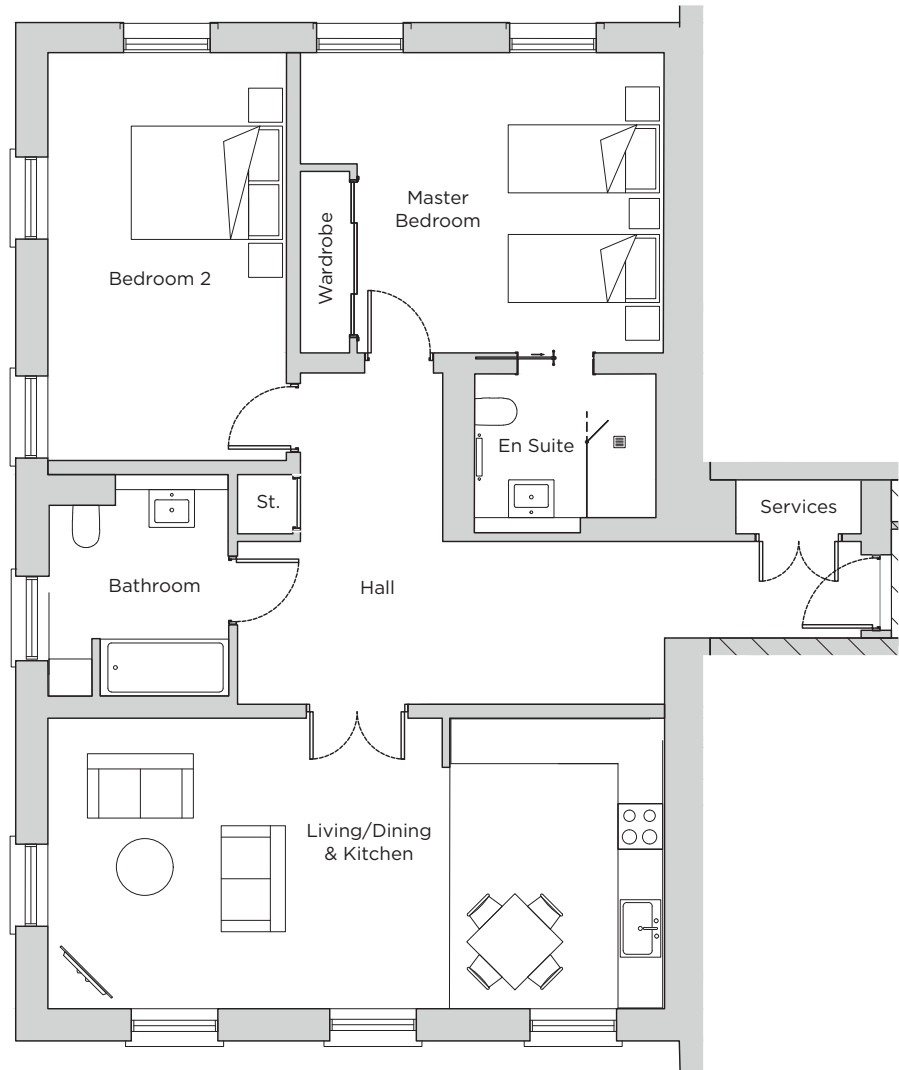


# Audley Sunningdale Park

Northcote House  
 First Floor Apartment  
 Plot 05 (NH05)



## Internal Measurements

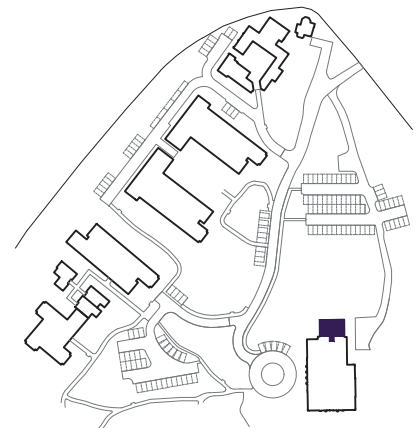
Living / Dining Room & Kitchen  
 Master Bedroom  
 Bedroom 2

## Metric (m)

8.15 x 3.73  
 4.89 x 3.96  
 5.39 x 3.16

## Imperial (ft)

26'9" x 12'3"  
 16'0" x 13'0"  
 17'8" x 10'4"



Audley Sunningdale Park  
 Silwood Road,  
 Ascot, Berkshire SL5 0QD  
 01344 859 239  
[www.audleyvillages.co.uk](http://www.audleyvillages.co.uk)

These floor plans are illustrative and for marketing purposes only. Maximum measurements are shown with longer dimensions quoted first. Dimensions are quoted for the main area of the room only. Built-in wardrobes not included in the overall room dimensions. Furniture shown to illustrate possible room layouts and not included in sale. Designs vary according to plot. All details should be checked at the Sales Office.  
 06/05/2020

025011



# Audley Sunningdale Park

Northcote House  
First Floor Apartment  
Plot 05 (NH05)



## 2 bedroom, first floor apartment

This first floor, two double bedroom apartment is located in the historic Northcote House, home to the restaurant and leisure facilities.

This property has a spacious living/dining and open plan kitchen with dual-aspect views. The large master bedroom has an en suite shower room and built-in wardrobes.

The property has a separate guest bathroom and an extra hallway storage cupboard with double doors.

Property specifications:

- Views over the landscaped grounds
- Dual-aspect second bedroom
- En suite shower room from the master bedroom
- Luxury Villeroy & Boch sanitaryware in bathroom and shower room

Audley Sunningdale Park  
Silwood Road,  
Ascot, Berkshire SL5 0QD  
01344 859 239  
[www.audleyvillages.co.uk](http://www.audleyvillages.co.uk)

