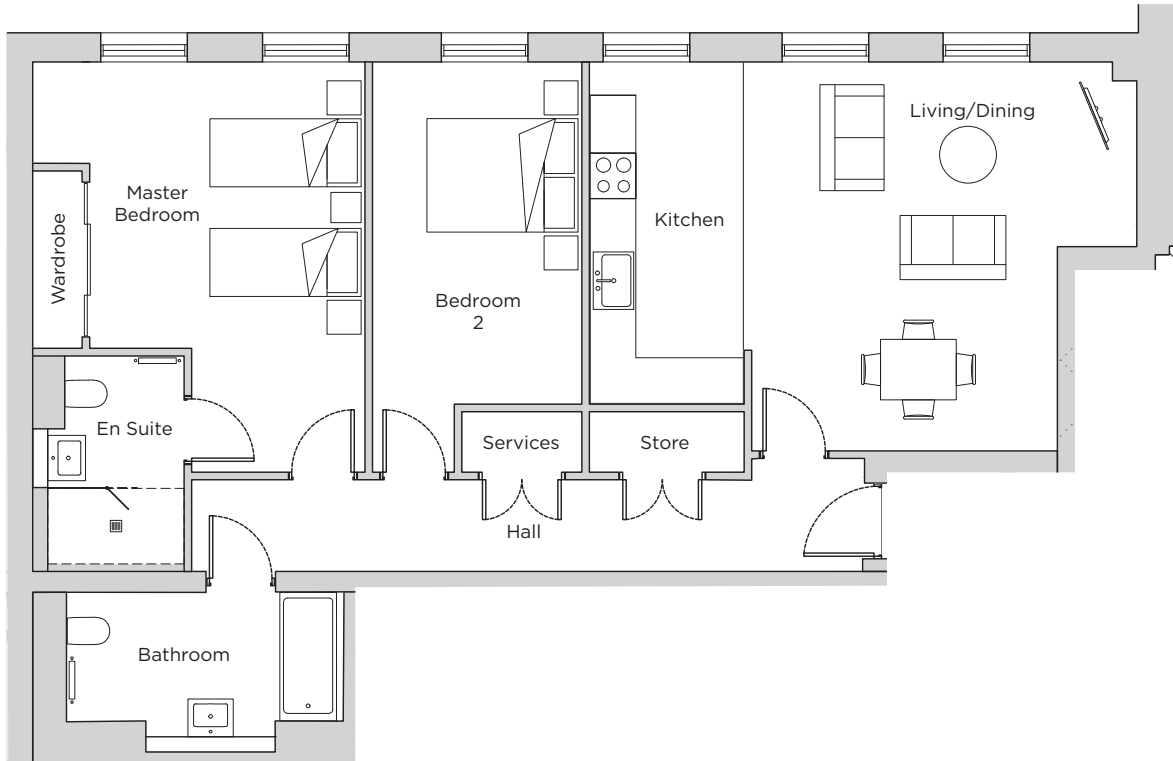


Audley Sunningdale Park

Northcote House
Ground Floor Apartment
Plot 03 (NH03)



Internal Measurements

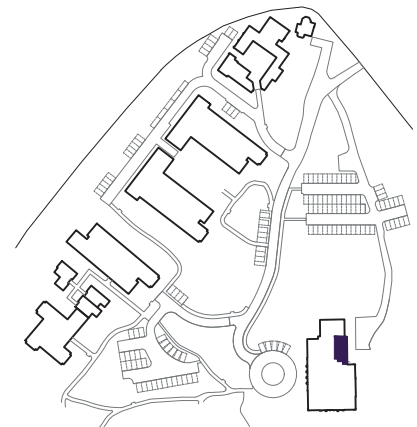
Living / Dining Room
Kitchen
Master Bedroom
Bedroom 2

Metric (m)

5.95 x 3.45
4.64 x 2.13
5.15 x 3.75
4.54 x 3.42

Imperial (ft)

19'6" x 11'4"
15'3" x 7'0"
16'11" x 12'3"
14'11" x 11'3"



Audley Sunningdale Park
Silwood Road,
Ascot, Berkshire SL5 0QD
01344 859 239
www.audleyvillages.co.uk

These floor plans are illustrative and for marketing purposes only. Maximum measurements are shown with longer dimensions quoted first. Dimensions are quoted for the main area of the room only. Built-in wardrobes not included in the overall room dimensions. Furniture shown to illustrate possible room layouts and not included in sale. Designs vary according to plot. All details should be checked at the Sales Office.
06/05/2020

025011



Audley Sunningdale Park

Northcote House
Ground Floor Apartment
Plot 03 (NH03)



2 bedroom, ground floor apartment

This ground floor, two double bedroom apartment is located in the historic Northcote House, home to the restaurant and leisure facilities.

The property has a spacious living/dining and open plan kitchen. The large master bedroom has an en suite shower room and built-in wardrobes, plus a separate guest bathroom.

Property specifications:

- En suite shower room from the master bedroom
- Fully equipped SieMatic kitchen with integrated appliances
- East-facing living room with and space for a dining table
- Luxury Villeroy & Boch sanitaryware in bathroom and shower room



Audley Sunningdale Park
Silwood Road,
Ascot, Berkshire SL5 0QD
01344 859 239
www.audleyvillages.co.uk

