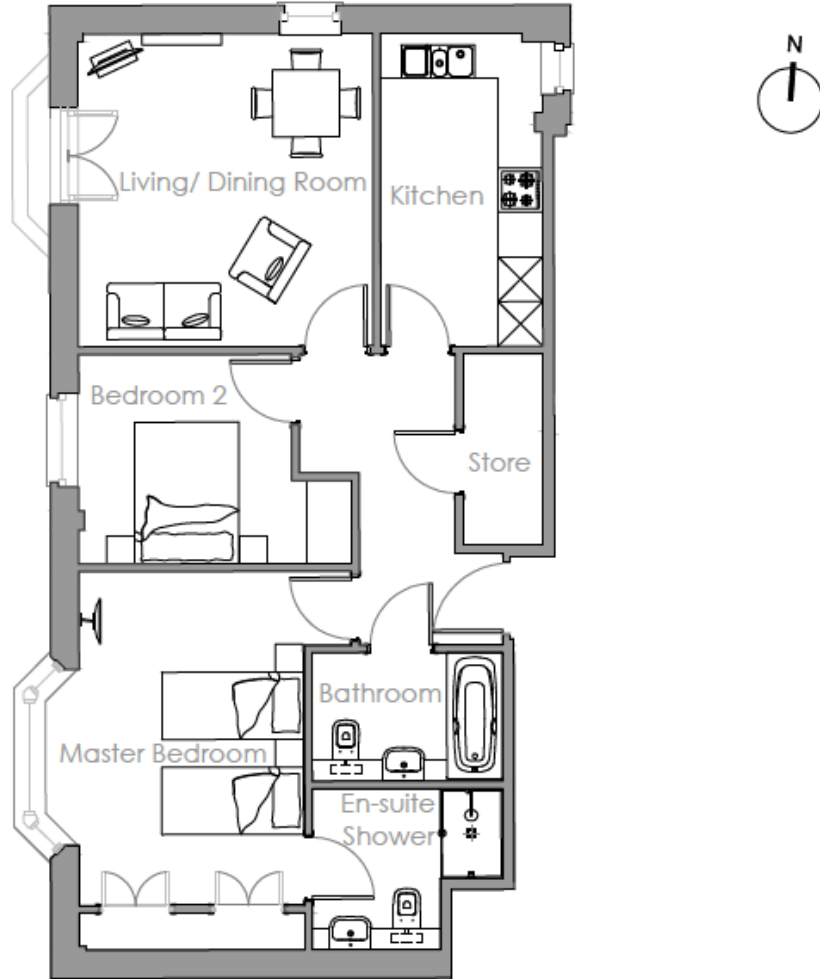
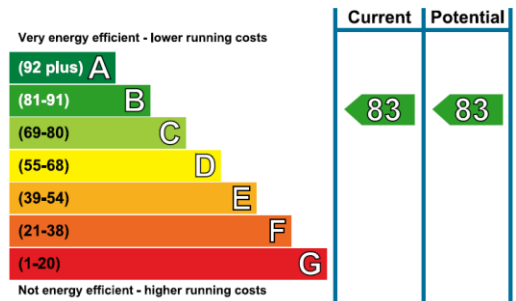


# Audley St George's Place

5 St George's House  
Two bedroom pre-owned apartment



Internal Measurements	Metric (m)	Imperial (ft)
Living/Dining Room	4.20m x 3.95m	13'9" x 12'11"
Kitchen	4.20m x 2.18m	13'9" x 7'1"
Master Bedroom	5.08m x 3.47m	16'8" x 11'4"
Bedroom 2	3.66m x 2.81m	12'0" x 9'2"
Total Sq.ft 785		



Audley St George's Place  
2 Church Road, Edgbaston, West Midlands, B15 3SH  
0121 293 1093 stgeorgesales@audleyvillages.co.uk  
www.audleyvillages.co.uk

Built in wardrobes in bedrooms have not been included in the overall dimensions.  
Maximum measurements shown. These pages are intended for marketing purposes only.  
Designs vary according to plot and all details should be checked at the Sales office.  
Sept 2016

# Audley St George's Place

5 St George's House  
Two bedroom pre-owned apartment



## Two bedroom apartment

This delightful two bedroom apartment enjoys a charming living/dining room that is enhanced by a west-facing Juliet balcony. The property offers a large master bedroom with fitted wardrobes and an en suite shower room with Villeroy & Boch sanitaryware. There is also a separate bathroom, SieMatic kitchen with integrated appliances and a large storage cupboard in the hallway.



### Property specifications

- Second floor apartment with lift access
- Living/dining room with a Juliet balcony
- Master bedroom with an en suite shower room
- Guest bedroom with storage facilities
- Separate SieMatic kitchen with Corian worksurfaces
- Large storage cupboard



### Guide Price **£320,000** (other fees apply)

Monthly management fee £424.88  
Annual ground rent £500  
Bistro credit £56.67

Viewing by appointment with the sales office.

Audley St George's Place  
2 Church Road, Edgbaston, West Midlands, B15 3SH  
0121 293 1093 [stgeorgesales@audleyvillages.co.uk](mailto:stgeorgesales@audleyvillages.co.uk)  
[www.audleyvillages.co.uk](http://www.audleyvillages.co.uk)

