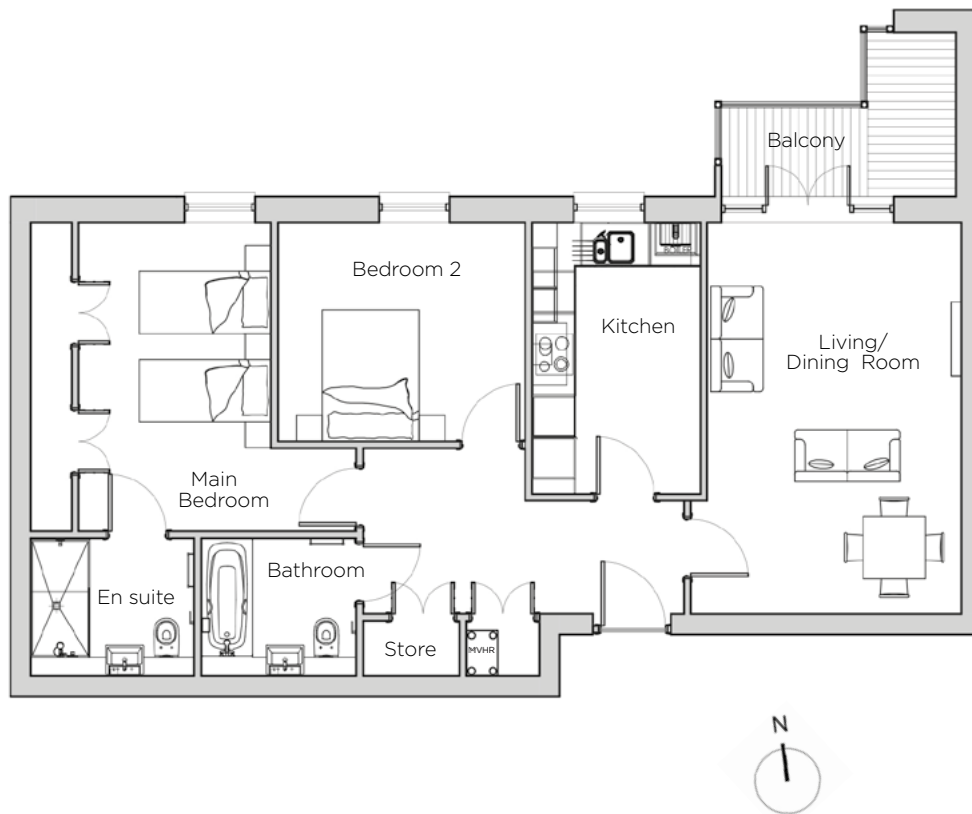


# Audley St George's Place

42 Chamberlain Place (E37)  
Third Floor Apartment



| Internal Measurements       | Metric (m)               | Imperial (ft)            |
|-----------------------------|--------------------------|--------------------------|
| Living/Dining Room          | 5.65 x 3.91              | 18'6" x 12'10"           |
| Kitchen                     | 3.92 x 2.43              | 12'10" x 7'11"           |
| Main Bedroom                | 4.70 x 4.45              | 15'5" x 14'7"            |
| Bedroom 2                   | 3.16 x 3.57              | 10'3" x 11.7"            |
| <b>Total Apartment Area</b> | <b>83.5m<sup>2</sup></b> | <b>899ft<sup>2</sup></b> |



Audley St George's Place  
2 Church Road  
Edgbaston, West Midlands B15 3SH  
0121 454 5270  
[www.audleyvillages.co.uk](http://www.audleyvillages.co.uk)

Built-in wardrobes in bedrooms have not been included in the overall dimensions.  
Maximum measurements shown. These pages are intended for marketing purposes only.  
Designs vary according to plot and all details should be checked at the Sales Office.  
March 2019



# Audley St George's Place

42 Chamberlain Place (E37)  
Third Floor Apartment



## 2 bedroom, third floor apartment

42 Chamberlain Place is a superb third floor apartment with a large private balcony that is accessed through double French doors from the spacious living/dining room. Fitted with a beautiful SieMatic kitchen and two high-quality bathrooms, this new build home has a contemporary finish.

Property specifications:

- Large private balcony
- High-end SieMatic kitchen
- Main bedroom with fitted wardrobes and en suite shower
- Villeroy & Boch bathroom
- Second double bedroom
- Easy access via stairs or lifts



Audley St George's Place  
2 Church Road  
Edgbaston, West Midlands B15 3SH  
0121 454 5270  
[www.audleyvillages.co.uk](http://www.audleyvillages.co.uk)

