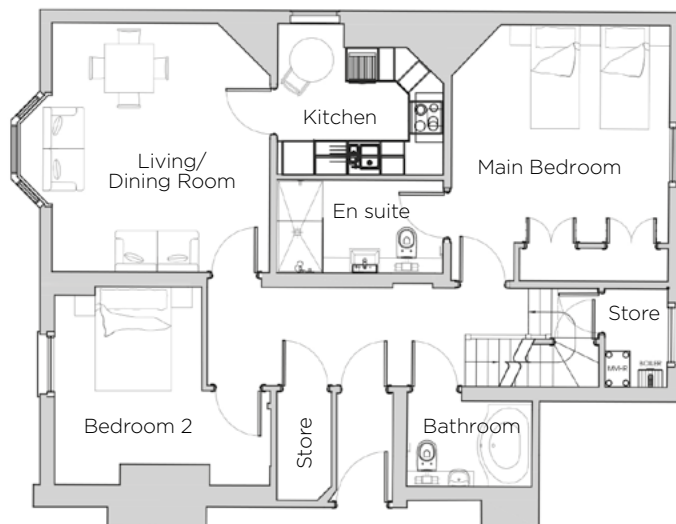
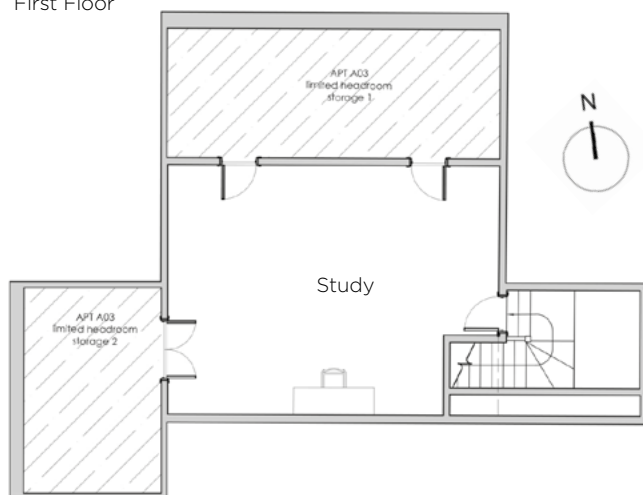


Audley St George's Place

3 Middlemore Hall (A03)
First Floor Duplex Apartment



First Floor



Second Floor

Internal Measurements	Metric (m)	Imperial (ft)
Living/Dining Room	4.56 x 3.98	14'69" x 13'05"
Kitchen	3.04 x 2.76	9'97" x 9'05"
Main Bedroom	4.69 x 3.98	15'38" x 13'05"
Bedroom 2	3.96 x 3.63	12'99" x 11'90"
Study	6.07 x 4.57	19'91" x 14'99"
Total Apartment Area	118.87m²	1335ft²



Audley St George's Place
2 Church Road
Edgbaston, West Midlands B15 3SH
0121 454 5270
www.audleyvillages.co.uk

Built-in wardrobes in bedrooms have not been included in the overall dimensions.
Maximum measurements shown. These pages are intended for marketing purposes only.
Designs vary according to plot and all details should be checked at the Sales Office.
March 2019



Audley St George's Place

3 Middlemore Hall (A03)
First Floor Duplex Apartment



2 bedroom, first floor apartment

This exceptional two-storey apartment is truly unique and has been carefully restored keeping its elegant Georgian character. The superb second floor has a very large study/third bedroom and two large storage areas.

Property specifications:

- Excellent storage space
- Large study that can be used as a third bedroom on the second floor
- Main bedroom has fitted wardrobes and an en suite
- Living/dining room with Georgian bay window
- Luxury kitchen with space for a breakfast table
- Additional separate bathroom



Audley St George's Place
2 Church Road
Edgbaston, West Midlands B15 3SH
0121 454 5270
www.audleyvillages.co.uk

