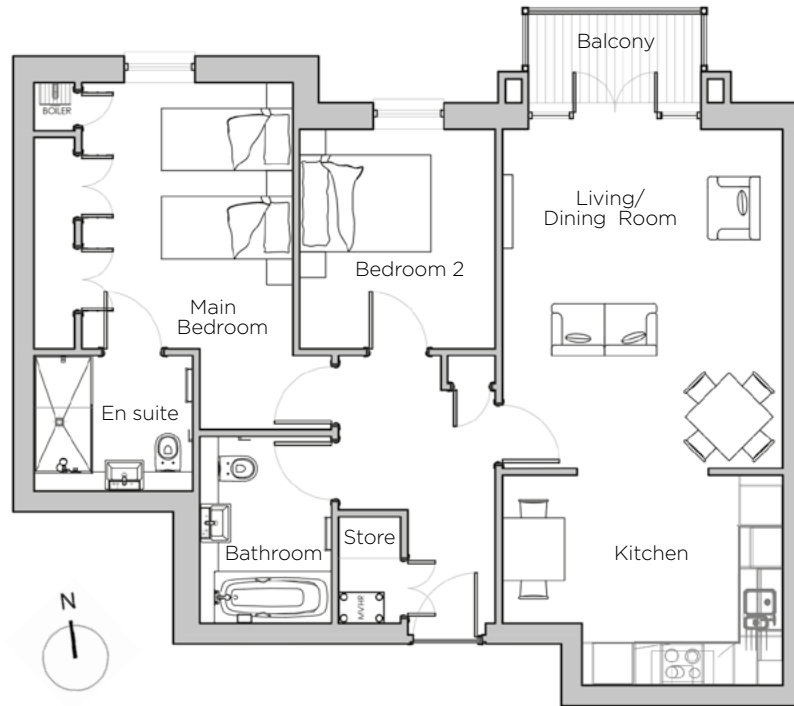
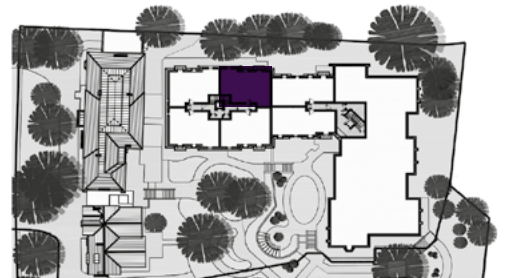


Audley St George's Place

11 Chamberlain Place (E34)
Second Floor Apartment



Internal Measurements	Metric (m)	Imperial (ft)
Living/Dining Room	4.91 x 4.05	16'1" x 13'3"
Kitchen	4.05 x 3.04	13'3" x 9'11"
Main Bedroom	5.02 x 3.74	16'6" x 12'3"
Bedroom 2	3.18 x 2.83	10'5" x 9'3"
Total Apartment Area	78.4m ²	844ft ²



Audley St George's Place
2 Church Road
Edgbaston, West Midlands B15 3SH
0121 454 5270
www.audleyvillages.co.uk

Built-in wardrobes in bedrooms have not been included in the overall dimensions.
Maximum measurements shown. These pages are intended for marketing purposes only.
Designs vary according to plot and all details should be checked at the Sales Office.
March 2019



Audley St George's Place

11 Chamberlain Place (E34)
Second Floor Apartment



2 bedroom, second floor apartment

Located at the northern edge of St George's Place retirement village, this delightful two bedroom apartment is situated on the second floor of the new-build Chamberlain Place.

Property specifications:

- New SieMatic kitchen with Corian worktops and integrated appliances
- Private timber-decked balcony from the living/dining room
- Main bedroom with fitted wardrobes and en suite shower
- Main bathroom and guest bedroom



Audley St George's Place
2 Church Road
Edgbaston, West Midlands B15 3SH
0121 454 5270
www.audleyvillages.co.uk

