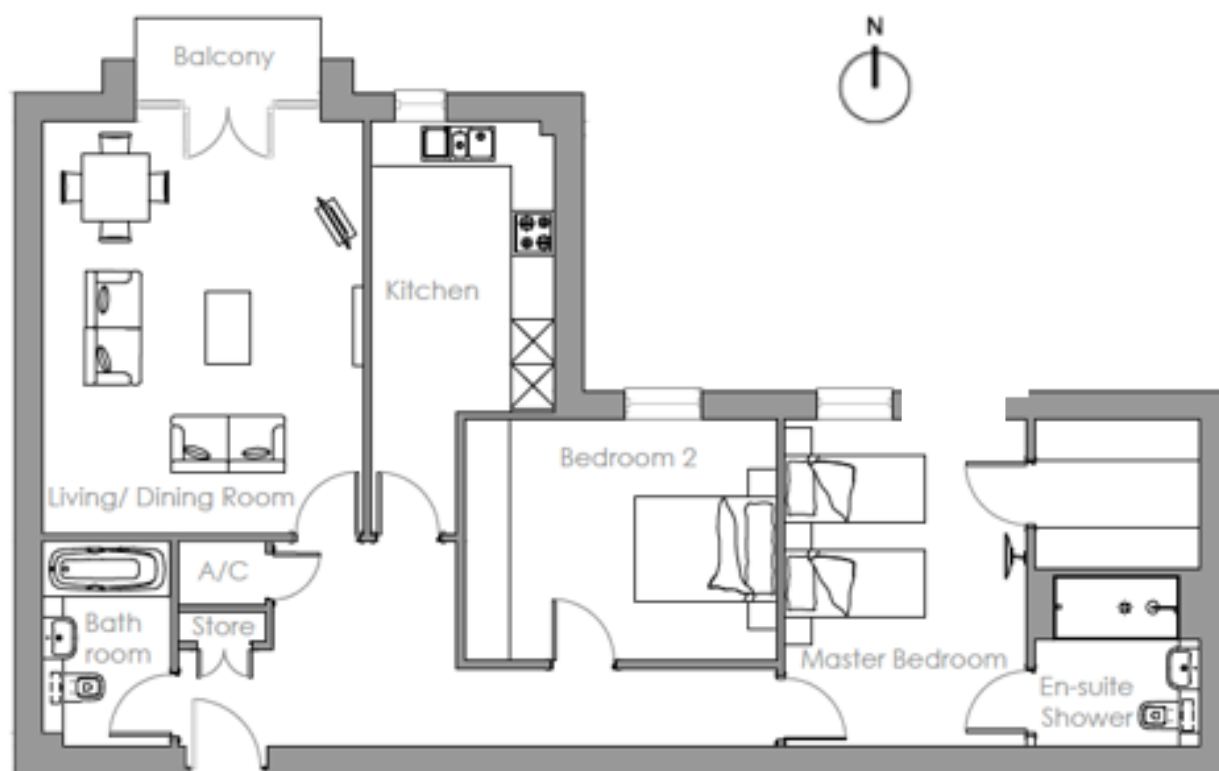
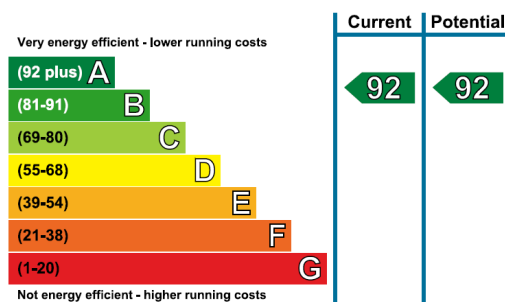


Audley St George's Place

8 Gabriel Place
Two bedroom pre-owned apartment



| Internal Measurements | Metric (m) | Imperial (ft) |
|-----------------------|---------------|---------------|
| Living/Dining Room | 5.53m x 4.32m | 18'1" x 14'2" |
| Kitchen | 5.53m x 2.47m | 18'1" x 8'1" |
| Master Bedroom | 4.38m x 3.27m | 14'4" x 10'8" |
| Bedroom 2 | 4.20m x 3.24m | 13'9" x 10'7" |
| Total Sq.ft | 1,022 | |



Audley St George's Place
2 Church Road, Edgbaston, West Midlands, B15 3SH
0121 293 1093 stgeorgesales@audleyvillages.co.uk
www.audleyvillages.co.uk

Built in wardrobes in bedrooms have not been included in the overall dimensions.
Maximum measurements shown. These pages are intended for marketing purposes only.
Designs vary according to plot and all details should be checked at the Sales office.
Sept 2016



Audley St George's Place

8 Gabriel Place
Two bedroom pre-owned apartment



Two bedroom apartment

This stunning two bedroom apartment is located on the second floor of Gabriel Place in order to enjoy lovely views over the beautifully maintained village grounds. There is a spacious living/dining room that combines with the private balcony to create a comfortable living space that is perfect for entertaining. The master bedroom is well-appointed and enjoys a walk-in wardrobe and an en suite shower room.



Property specifications

- Second floor apartment with a private balcony
- Master bedroom with an en suite shower room
- Family bathroom with Villeroy & Boch sanitaryware
- Separate SieMatic kitchen with Corian worksurfaces
- Guest bedroom
- Storage facilities in hallway
- Lift access



Guide Price £369,950 (other fees apply)

Monthly management fee £787.71
Annual ground rent £500
Bistro credit £56.67

Viewing by appointment with the sales office.

Photos are for illustration purposes only.

Audley St George's Place
2 Church Road, Edgbaston, West Midlands, B15 3SH
0121 293 1093 stgeorgesales@audleyvillages.co.uk
www.audleyvillages.co.uk

