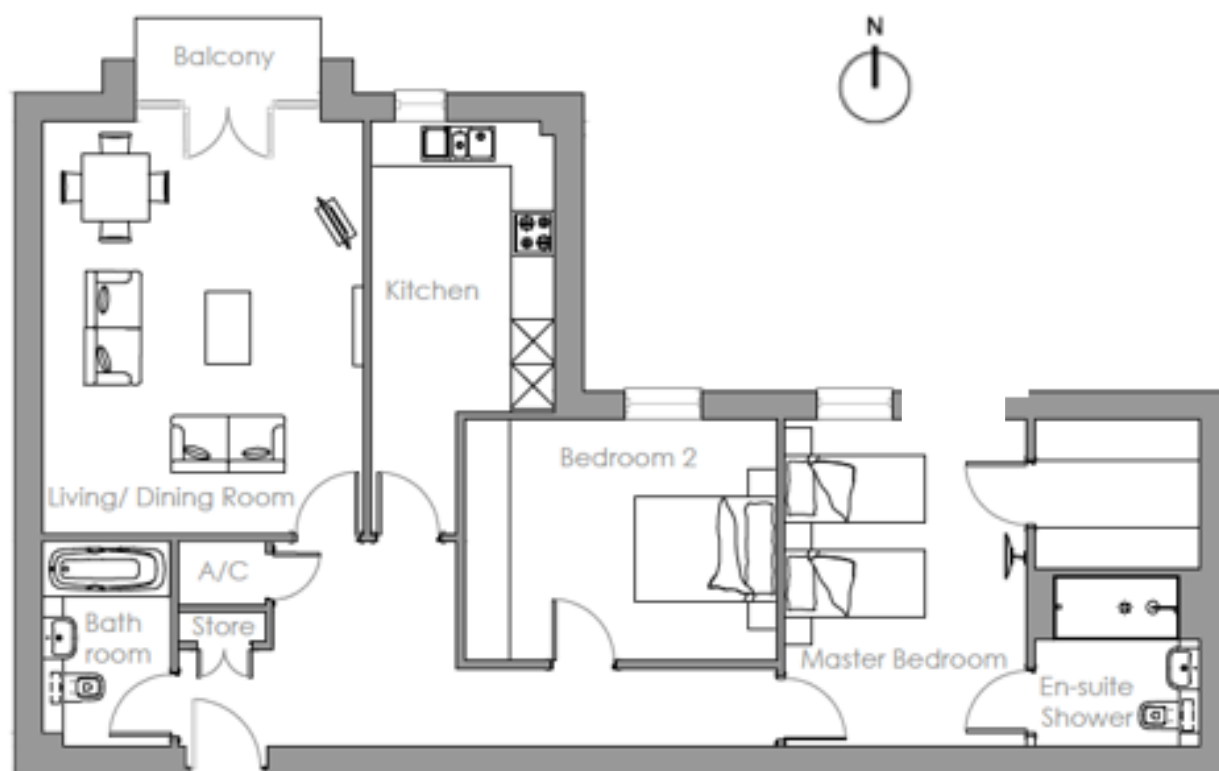
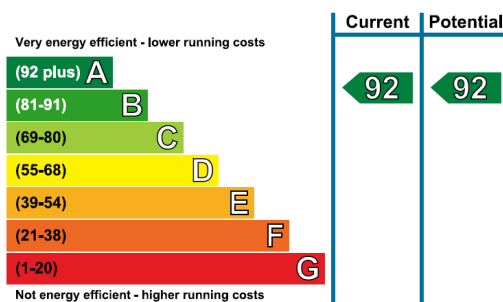


Audley St George's Place

8 Gabriel Place
Two bedroom pre-owned apartment



Internal Measurements	Metric (m)	Imperial (ft)
Living/Dining Room	5.53m x 4.32m	18'1" x 14'2"
Kitchen	5.53m x 2.47m	18'1" x 8'1"
Master Bedroom	4.38m x 3.27m	14'4" x 10'8"
Bedroom 2	4.20m x 3.24m	13'9" x 10'7"
Total Sq.ft	1,022	



Audley St George's Place
2 Church Road, Edgbaston, West Midlands, B15 3SH
0121 293 1093 stgeorgesales@audleyvillages.co.uk
www.audleyvillages.co.uk

Built in wardrobes in bedrooms have not been included in the overall dimensions.
Maximum measurements shown. These pages are intended for marketing purposes only.
Designs vary according to plot and all details should be checked at the Sales office.
Sept 2016



Audley St George's Place

8 Gabriel Place
Two bedroom pre-owned apartment



Photos are for illustration purposes only.

Two bedroom, second floor apartment

This stunning two bedroom apartment is located on the second floor of Gabriel Place where you can enjoy lovely views over the beautifully maintained village grounds. There is a spacious living/dining room that combines with the private balcony to create a comfortable living space that is perfect for entertaining. The master bedroom is well-appointed and benefits from a walk-in wardrobe and an en suite shower room.

Property specifications

- Second floor apartment with a private balcony
- Master bedroom with an en suite shower room
- Family bathroom with Villeroy & Boch sanitaryware
- Separate SieMatic kitchen with Corian worksurfaces
- Guest bedroom
- Storage facilities in hallway
- Lift access

Guide Price £369,950 (other fees apply)

Monthly management fee £829.88

Annual ground rent £500

Bistro credit £56.67

Viewing by appointment with the sales office.

Audley St George's Place
2 Church Road, Edgbaston, West Midlands, B15 3SH 0121 293
1093 stgeorgesales@audleyvillages.co.uk
www.audleyvillages.co.uk

