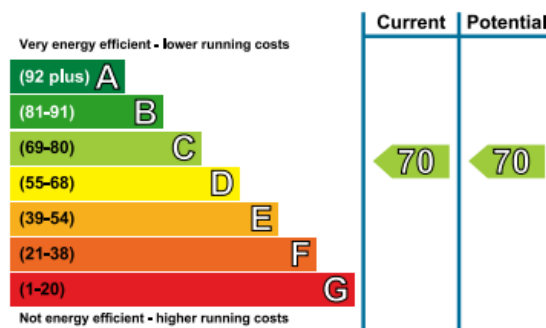
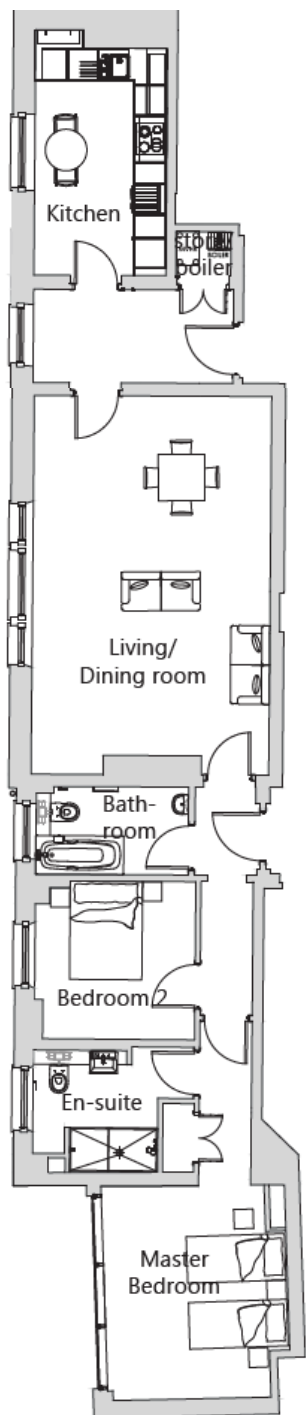


Audley St George's Place

5 Middlemore Hall
Two bedroom pre-owned apartment



Internal Measurements	Metric (m)	Imperial (ft)
Living/dining room	7.33m x 4.59m	24'04" x 15'05"
Kitchen	4.73m x 2.55m	15'51" x 8'36"
Master bedroom	4.11m x 3.55m	13'48" x 11'7"
Bedroom two	3.05m x 2.94m	12'7" x 11'7"
Total Sq. Ft	1,130	

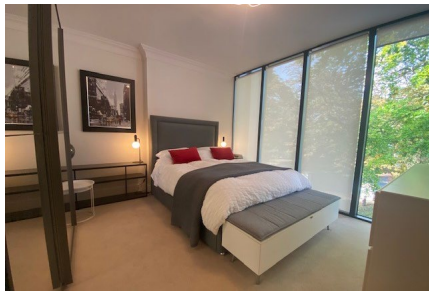
Audley St George's Place
2 Church Road, Edgbaston, West Midlands, B15 3SH
0121 293 1093 stgeorgesales@audleyvillages.co.uk
www.audleyvillages.co.uk

Built in wardrobes in bedrooms have not been included in the overall dimensions.
Maximum measurements shown. These pages are intended for marketing purposes only.
Designs vary according to plot and all details should be checked at the Sales office.
October 2020



Audley St George's Place

5 Middlemore Hall
Two bedroom pre-owned apartment



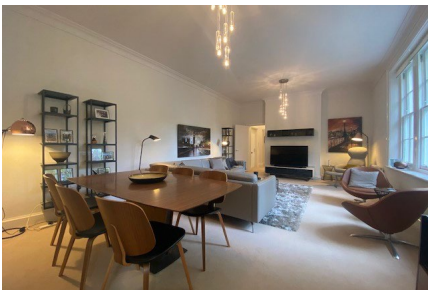
Two double bedroom first floor apartment

This beautiful restored apartment, on the first floor of the Grade II listed Middlemore Hall, is entirely west-facing and has delightful windows that are in-keeping with its Georgian origins. It has a very spacious living/dining room with a large window that makes it the perfect room to relax and unwind in.



Property specifications

- Spacious hall/study
- Luxury Siematic kitchen with space for a breakfast table
- A large living/dining room with real character
- Master bedroom with full window wall, large mirrored wardrobe and shower room
- Separate Villeroy & Boch bathroom
- Lift access to the first floor
- Light fittings and blinds included



Price £440,000 (other fees apply)

Monthly management fee £829.88

Annual ground rent £500

Bistro credit £56.67

Viewing by appointment with the sales office.

Audley St George's Place
2 Church Road, Edgbaston, West Midlands, B15 3SH 0121 293
1093 stgeorgesales@audleyvillages.co.uk
www.audleyvillages.co.uk

