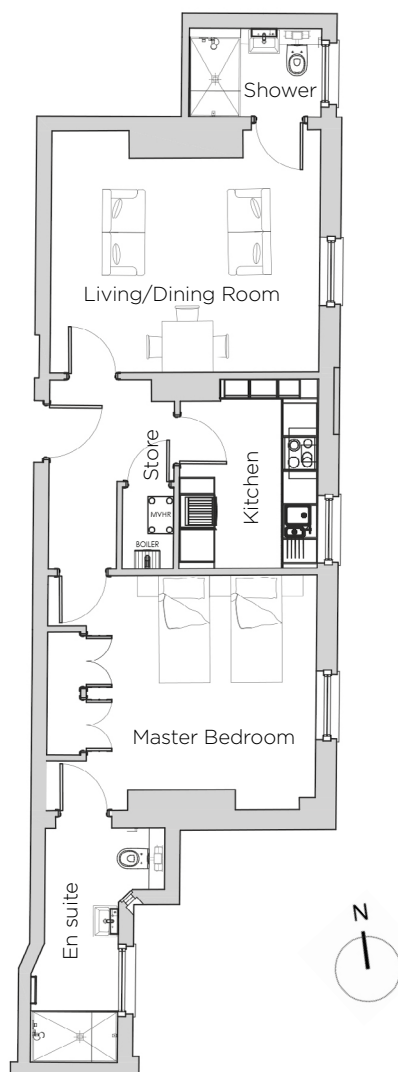
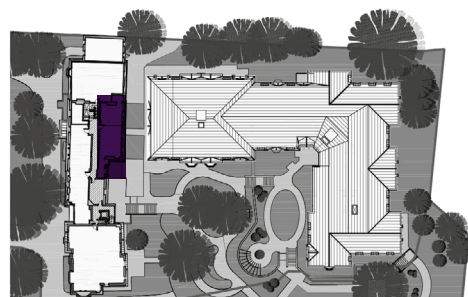


Audley St George's Place

4 Middlemore Hall (A04)
First Floor Apartment



Internal Measurements	Metric (m)	Imperial (ft)
Living/Dining Room	4.64 x 4.27	15'6" x 14'0"
Kitchen	3.34 x 2.44	10'11" x 8'0"
Master Bedroom	4.73 x 4.15	15'6" x 13'7"
Total Apartment Area	67m ²	721ft ²



Audley St George's Place
2 Church Road
Edgbaston, West Midlands B15 3SH
0121 454 5270
www.audleyvillages.co.uk

Built-in wardrobes in bedrooms have not been included in the overall dimensions.
Maximum measurements shown. These pages are intended for marketing purposes only.
Designs vary according to plot and all details should be checked at the Sales Office.
March 2019



Audley St George's Place

4 Middlemore Hall (A04)
First Floor Apartment



1 bedroom, first floor apartment

This newly converted one bedroom apartment is set in the characterful Grade II listed Georgian Middlemore Hall. It is just moments away from the superb amenities of St George's House with its health club, bar and restaurant.

Property specifications:

- Spacious living/dining room with east-facing window
- Master bedroom with fitted wardrobes and an en suite shower room
- Luxury SieMatic Kitchen with Corian worktops
- Separate Villeroy & Boch shower room



Audley St George's Place
2 Church Road
Edgbaston, West Midlands B15 3SH
0121 454 5270
www.audleyvillages.co.uk

