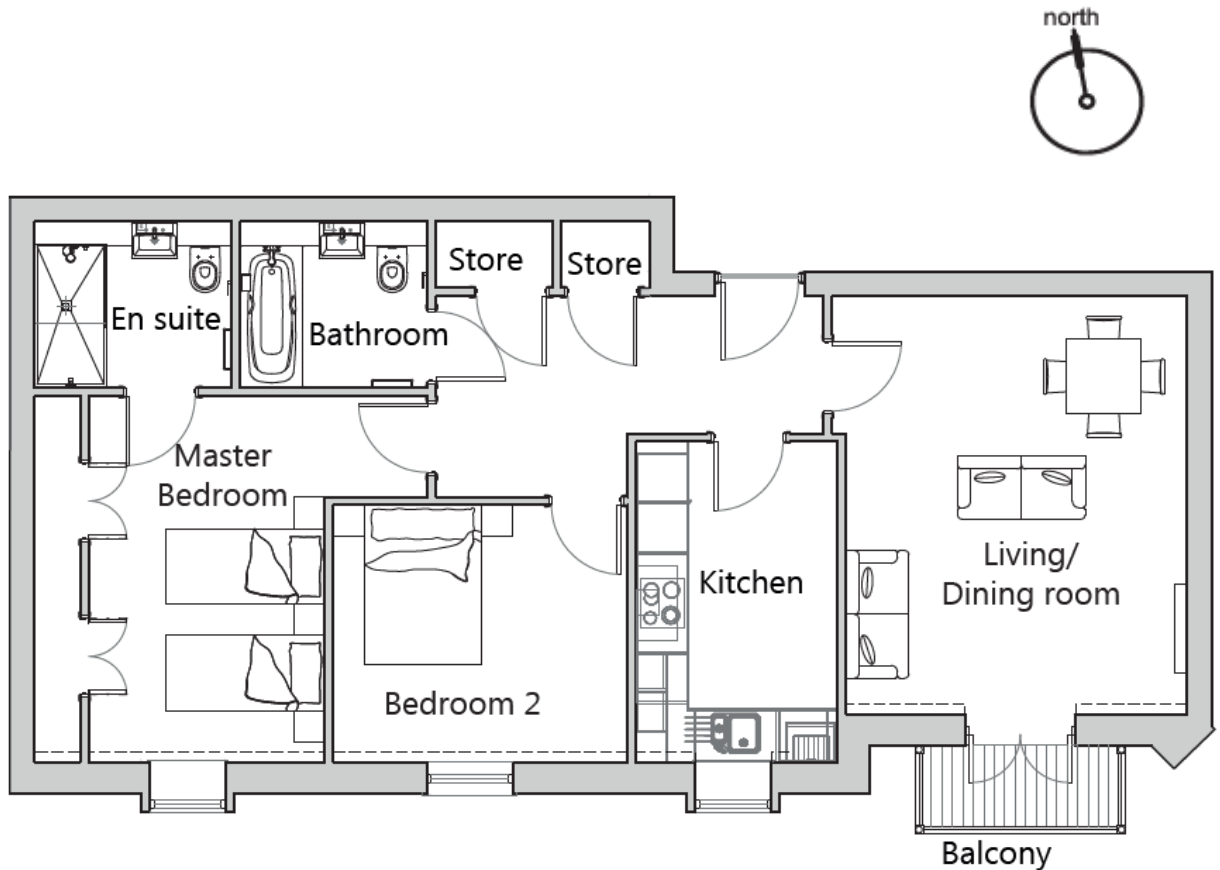


Audley St George's Place

49 Chamberlain Place
Two bedroom pre-owned apartment



Internal Measurements	Metric (m)	Imperial (ft)
Living/Dining Room	4.49m x 4.25m	16'4" x 13'11"
Kitchen	3.83m x 2.41m	12'6" x 7'11"
Master Bedroom	4.70m x 4.37m	15'5" x 14'4"
Bedroom 2	3.52m x 3.07m	11'6" x 10'0"
Total Sq.ft 875		

	Current	Potential
Very energy efficient - lower running costs (92 plus) A (81-91) B (69-80) C (55-68) D (39-54) E (21-38) F (1-20) G Not energy efficient - higher running costs	86	86

Audley St George's Place
2 Church Road, Edgbaston, West Midlands, B15 3SH
0121 293 1093 stgeorgesales@audleyvillages.co.uk
www.audleyvillages.co.uk

Built in wardrobes in bedrooms have not been included in the overall dimensions. Maximum measurements shown. These pages are intended for marketing purposes only. Designs vary according to plot and all details should be checked at the Sales office. Oct 2016



Audley St George's Place

49 Chamberlain Place
Two bedroom pre-owned apartment



Photos are for illustration purposes only.

Two bedroom apartment

This charming two bedroom apartment is perfectly located on the fourth floor of Chamberlain Place to enjoy lovely views over the landscaped gardens from the private south-facing balcony. The master bedroom is well-appointed and offers fitted wardrobes and an en suite shower room. There is also a modern SieMatic kitchen with integrated appliances, a spacious living room and a guest bathroom with Villeroy & Boch sanitaryware.

Property specifications

- Fourth floor apartment with a private balcony
- Master bedroom with an en suite shower room
- Guest bedroom and bathroom
- Separate SieMatic kitchen with integrated appliances
- Spacious living room that offers access to the balcony
- Property accessed by a serviced lift or stairway

Guide Price £330,000 (other fees apply)

Monthly management fee £424.88

Annual ground rent £500

Bistro credit £56.67

Viewing by appointment with the sales office.

Audley St George's Place
2 Church Road, Edgbaston, West Midlands, B15 3SH
0121 293 1093 stgeorgesales@audleyvillages.co.uk
www.audleyvillages.co.uk

