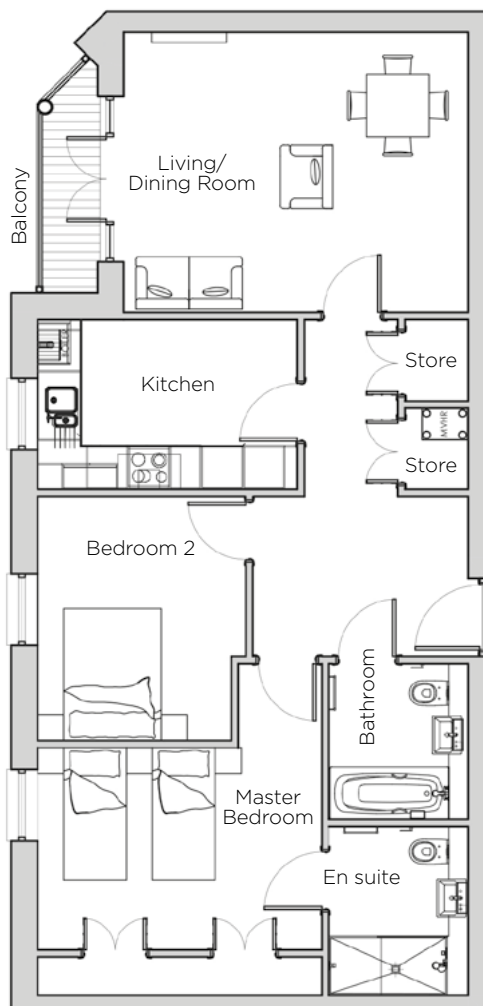
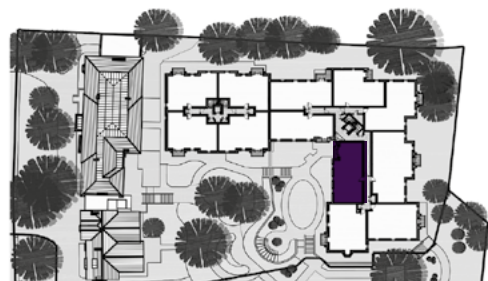


Audley St George's Place

48 Chamberlain Place (E43)
Third Floor Apartment



Internal Measurements	Metric (m)	Imperial (ft)
Living/Dining Room	4.94 x 4.03	16'2" x 13'2"
Kitchen	3.73 x 2.45	12'2" x 8'0"
Master Bedroom	4.77 x 4.08	15'7" x 13'4"
Bedroom 2	3.51 x 2.99	11'6" x 9'8"
Total Apartment Area	81m ²	872ft ²



Audley St George's Place
2 Church Road
Edgbaston, West Midlands B15 3SH
0121 454 5270
www.audleyvillages.co.uk

Built-in wardrobes in bedrooms have not been included in the overall dimensions.
Maximum measurements shown. These pages are intended for marketing purposes only.
Designs vary according to plot and all details should be checked at the Sales Office.
March 2019



Audley St George's Place

48 Chamberlain Place (E43)
Third Floor Apartment



2 bedroom, third floor apartment

Just moments away from St George's House with its health club, swimming pool and restaurant, this third floor luxury apartment is part of the new Chamberlain Place building.

Property specifications:

- Spacious living/dining room
- Luxury Siematic kitchen
- Private west-facing timber-decked balcony
- Double fitted wardrobes in master bedroom
- Villeroy & Boch en suite and separate bathroom
- Two storage cupboards in hallway

Audley St George's Place
2 Church Road
Edgbaston, West Midlands B15 3SH
0121 454 5270
www.audleyvillages.co.uk

