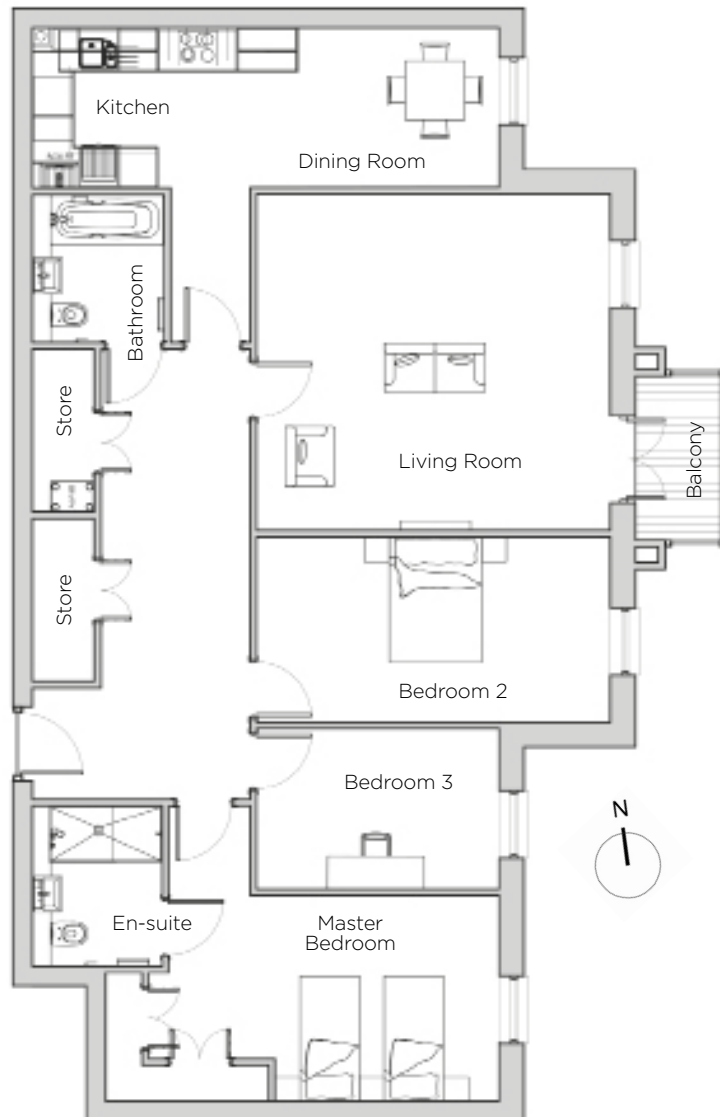


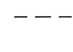


# Audley St George's Place

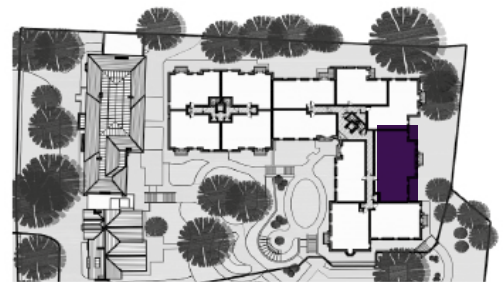
45 Chamberlain Place (E40)  
Third Floor Apartment



**Drawing Legend:**

-  Boiler
-  MVHR
-  Reduced ceiling height

Internal Measurements	Metric (m)	Imperial (ft)
Living Room	5.36m x 5.10m	17'7" x 16'8"
Kitchen	7.07m x 2.43m	23'2" x 7'11"
Master Bedroom	5.96m x 4.49m	19'6" x 14'8"
Bedroom 2	5.36m x 2.81m	17'5" x 9'21"
Bedroom 3	3.67m x 2.43m	12'0" x 7'11"
<b>Total Apartment Area</b>	<b>127.3m<sup>2</sup></b>	<b>1370ft<sup>2</sup></b>



Audley St George's Place  
2 Church Road, Edgbaston, West Midlands B15 3SH  
0121 454 5270  
[www.audleyvillages.co.uk](http://www.audleyvillages.co.uk)

Built-in wardrobes in bedrooms have not been included in the overall dimensions.  
Maximum measurements shown. These pages are intended for marketing purposes only.  
Designs vary according to plot and all details should be checked at the Sales Office.  
March 2018



# Audley St George's Place

45 Chamberlain Place (E40)  
Third Floor Apartment



CGI for illustration purposes only



## 3 bedroom third floor apartment

This excellently located three bedroom apartment is set on the far east of Audley St George's Place enjoying east-facing views. With an abundance of space and storage, it will make a very special home.

Property specifications:

- Large living room with French doors leading onto private timber-decked balcony
- Beautiful SieMatic kitchen with dining space
- Master bedroom has double built-in wardrobe and shower en-suite
- Spacious second bedroom and good size study/third bedroom
- Wide hallway with two storage cupboards
- Separate bathroom

Audley St George's Place  
2 Church Road, Edgbaston, West Midlands B15 3SH  
0121 454 5270  
[www.audleyvillages.co.uk](http://www.audleyvillages.co.uk)



Photos for illustration purposes only