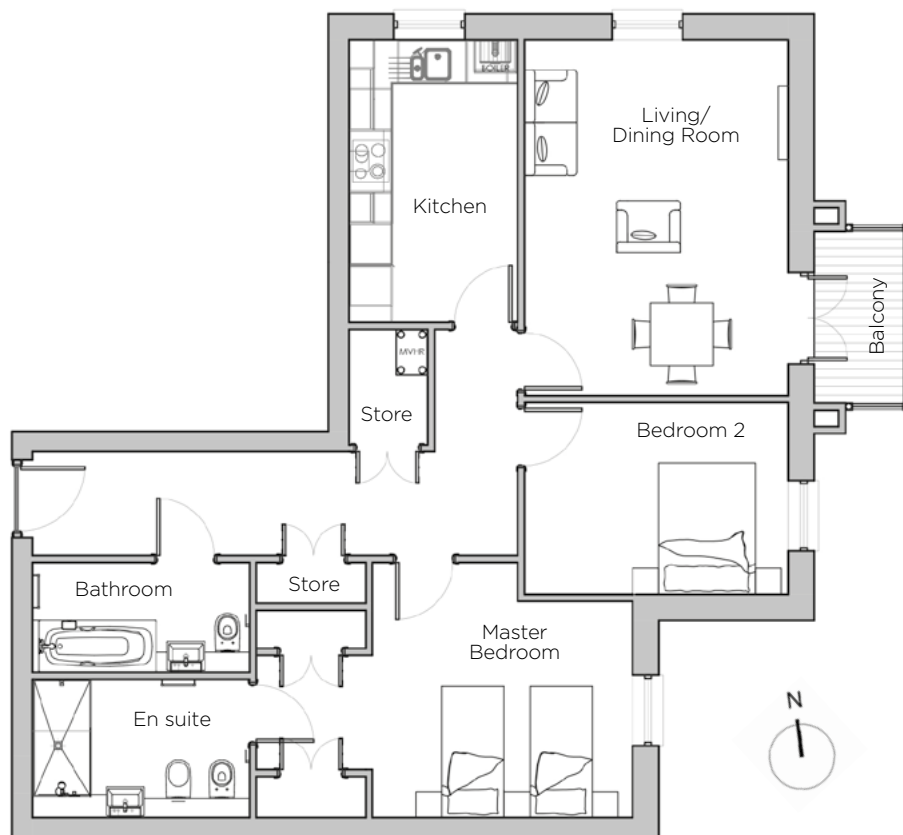
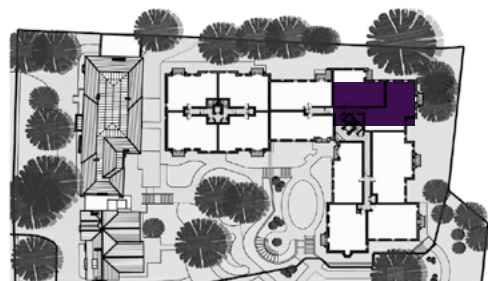


Audley St George's Place

44 Chamberlain Place (E39)
Third Floor Apartment



Internal Measurements	Metric (m)	Imperial (ft)
Living/Dining Room	5.14 x 3.81	16'10" x 12'5"
Kitchen	4.08 x 2.44	13'4" x 7'11"
Master Bedroom	5.43 x 3.69	17'9" x 12'1"
Bedroom 2	3.81 x 2.77	12'5" x 9'1"
Total Apartment Area	88.7m ²	955ft ²



Audley St George's Place
2 Church Road
Edgbaston, West Midlands B15 3SH
0121 454 5270
www.audleyvillages.co.uk

Built-in wardrobes in bedrooms have not been included in the overall dimensions.
Maximum measurements shown. These pages are intended for marketing purposes only.
Designs vary according to plot and all details should be checked at the Sales Office.
March 2019



Audley St George's Place

44 Chamberlain Place (E39)
Third Floor Apartment



2 bedroom, third floor apartment

This new build third floor apartment is light, airy and easily accessed by lift or stairs. On the corner of Audley St George's Place, trees surround the apartment. Both bedrooms and the living/dining room enjoy east-facing views of superb green space.

Property specifications:

- French doors leading from living/dining room onto private balcony
- Two fitted wardrobes and large en suite shower in master bedroom
- Two spacious storage cupboards in hallway
- Second bedroom and separate bathroom
- SieMatic kitchen with integrated appliances and Corian worktops

Audley St George's Place
2 Church Road
Edgbaston, West Midlands B15 3SH
0121 454 5270
www.audleyvillages.co.uk

