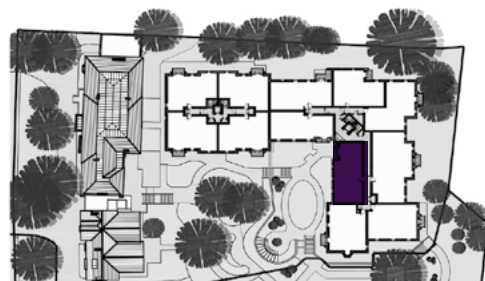


Audley St George's Place

40 Chamberlain Place (E31)
Second Floor Apartment



Internal Measurements	Metric (m)	Imperial (ft)
Living/Dining Room	4.94 x 4.03	16'2" x 13'2"
Kitchen	3.73 x 2.45	12'2" x 8'0"
Master Bedroom	4.77 x 4.08	15'7" x 13'4"
Bedroom 2	3.51 x 2.99	11'6" x 9'8"
Total Apartment Area	81m ²	872ft ²



Audley St George's Place
2 Church Road
Edgbaston, West Midlands B15 3SH
0121 454 5270
www.audleyvillages.co.uk

Built-in wardrobes in bedrooms have not been included in the overall dimensions.
Maximum measurements shown. These pages are intended for marketing purposes only.
Designs vary according to plot and all details should be checked at the Sales Office.
August 2020



Audley St George's Place

40 Chamberlain Place (E31)
Second Floor Apartment

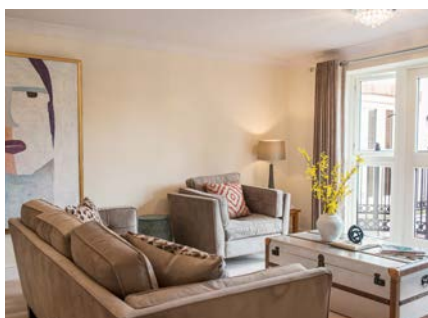


2 bedroom, second floor apartment

A beautifully spacious two bedroom, new build apartment with its own private balcony. The master bedroom has an impressive en suite and a large built-in wardrobe across the full length of the room.

Property specifications:

- Living/dining room with French doors leading onto a private balcony
- Fully-fitted Siematic kitchen
- Master bedroom and second double bedroom with west-facing aspect
- Large entrance way with two store cupboards
- Separate main bathroom



Audley St George's Place
2 Church Road
Edgbaston, West Midlands B15 3SH
0121 454 5270
www.audleyvillages.co.uk

