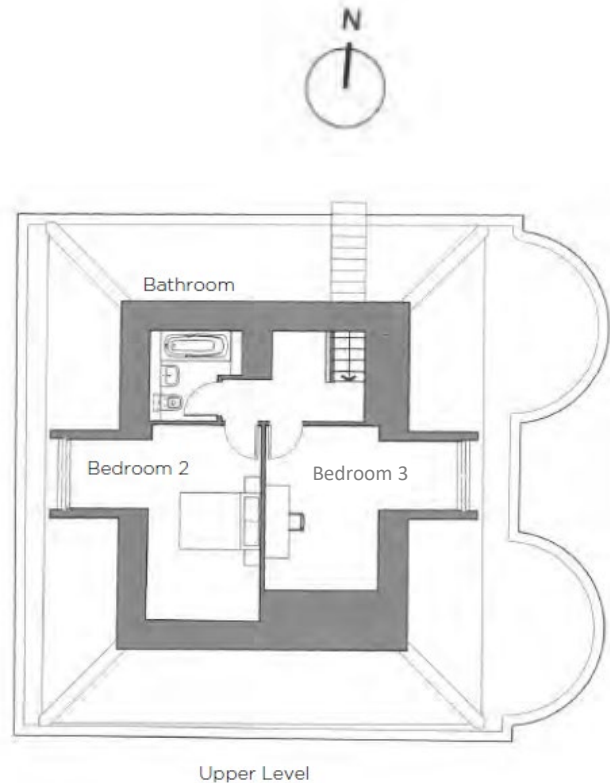
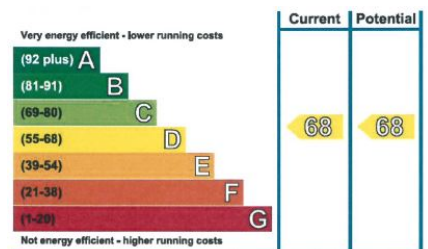


Audley St George's Place

3 St George's House
Three bedroom pre-owned duplex apartment



Internal Measurements	Metric (m)	Imperial (ft)
Living/Dining Room	5.17m x 4.58m	16'11" x 15'0"
Kitchen	3.38m x 3.20m	11'11" x 10'6"
Master Bedroom	5.26m x 4.91m	17'3" x 16'1"
Bedroom 2	4.83m x 4.71m	15'10" x 15'5"
Bedroom 3	4.72m x 4.07m	15'5" x 13'4"
Total Sq.ft 1290		



Audley St George's Place
2 Church Road, Edgbaston, West Midlands, B15 3SH
0121 293 1093 stgeorgesales@audleyvillages.co.uk
www.audleyvillages.co.uk

Built in wardrobes in bedrooms have not been included in the overall dimensions.
Maximum measurements shown. These pages are intended for marketing purposes only.
Designs vary according to plot and all details should be checked at the Sales office.
April 2019



Audley St George's Place

3 St George's House
Three bedroom pre-owned duplex apartment



3 bedroom duplex apartment



A spectacular duplex apartment with lift access, situated on the second and third floors of the Grade II listed St George's House, the centerpiece building at St George's place. The property boasts a large master bedroom with a beautiful regency bay window and is further complimented by an en suite shower room. On the third floor there are two additional bedrooms and a family bathroom.



Property specifications

- Master bedroom with stunning regency bay window and en suite shower room
- Two good sized guest bedrooms
- Stunning views overlooking the gardens
- Spacious living/dining room
- Luxurious fully fitted kitchen with full height window
- Two family bathrooms
- Large storage cupboard



Guide Price £550,000 (other fees apply)

Monthly management fee £467.05

Annual ground rent £500

Bistro credit £56.67

Viewing by appointment with the sales office.

Audley St George's Place
2 Church Road, Edgbaston, West Midlands, B15 3SH 0121
293 1093 stgeorgesales@audleyvillages.co.uk
www.audleyvillages.co.uk

