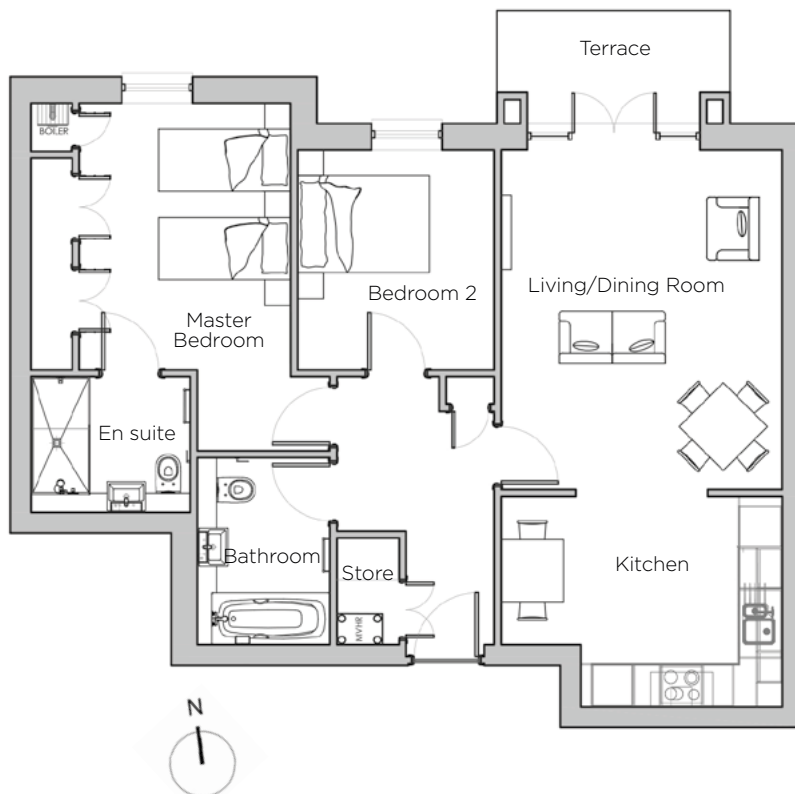
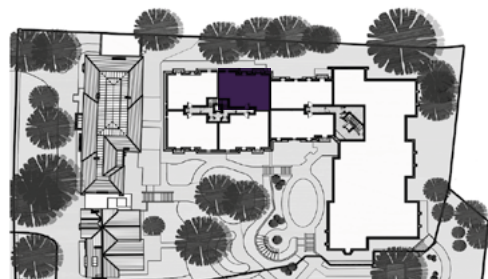


Audley St George's Place

3 Chamberlain Place (E10)
Ground Floor Apartment



Internal Measurements	Metric (m)	Imperial (ft)
Living/Dining Room	4.91 x 4.05	16'1" x 13'3"
Kitchen	4.05 x 3.04	13'3" x 9'11"
Master Bedroom	5.02 x 3.74	16'6" x 12'3"
Bedroom 2	3.18 x 2.83	10'5" x 9'3"
Total Apartment Area	78.5m ²	845ft ²



Audley St George's Place
2 Church Road
Edgbaston, West Midlands B15 3SH
0121 454 5270
www.audleyvillages.co.uk

Built-in wardrobes in bedrooms have not been included in the overall dimensions.
Maximum measurements shown. These pages are intended for marketing purposes only.
Designs vary according to plot and all details should be checked at the Sales Office.
March 2019



Audley St George's Place

3 Chamberlain Place (E10)
Ground Floor Apartment



CGI for illustration purposes only



2 bedroom ground floor apartment

Situated in the new build development of Chamberlain Place, built to compliment the historic buildings within St George's Place retirement village, this two bedroom apartment provides a luxurious feel close to the facilities of St George's House.

Property specifications:

- SieMatic kitchen with Corian worktops and space for a breakfast table
- Private terrace from the living/dining room
- Large fitted wardrobes and en suite shower in master bedroom
- Separate bathroom and second double bedroom

Audley St George's Place
2 Church Road
Edgbaston, West Midlands B15 3SH
0121 454 5270
www.audleyvillages.co.uk



Photos for illustration purposes only