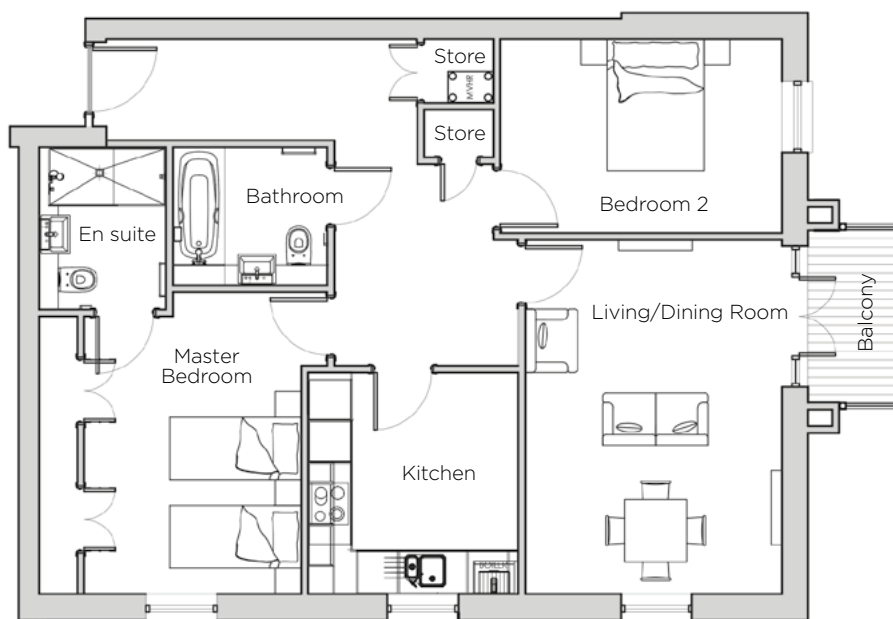
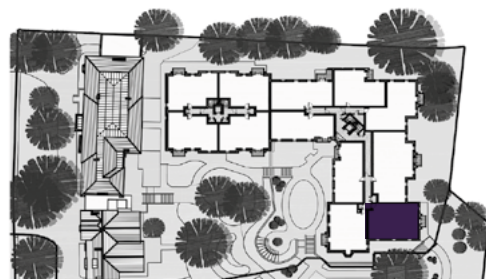


# Audley St George's Place

38 Chamberlain Place (E29)  
Second Floor Apartment



Internal Measurements	Metric (m)	Imperial (ft)
Living/Dining Room	5.11 x 3.71	16'9" x 12'2"
Kitchen	3.20 x 3.04	10'5" x 9'11"
Master Bedroom	4.36 x 4.16	14'3" x 13'7"
Bedroom 2	4.07 x 2.80	13'4" x 9'2"
Total Apartment Area	84.9m <sup>2</sup>	914ft <sup>2</sup>



Audley St George's Place  
2 Church Road  
Edgbaston, West Midlands B15 3SH  
0121 454 5270  
[www.audleyvillages.co.uk](http://www.audleyvillages.co.uk)

Built-in wardrobes in bedrooms have not been included in the overall dimensions.  
Maximum measurements shown. These pages are intended for marketing purposes only.  
Designs vary according to plot and all details should be checked at the Sales Office.  
March 2019



# Audley St George's Place

38 Chamberlain Place (E29)  
Second Floor Apartment



## 2 bedroom second floor apartment

This second floor apartment has its own private east-facing balcony overlooking landscaped gardens and plenty of green space. With a luxury SieMatic kitchen with integrated appliances and Corian worktops, this apartment is finished to the highest standard.

Property specifications:

- Lift and stairs access to all floors
- Living/dining room opens out onto a private balcony
- Master bedroom has a large fitted wardrobe and en suite bathroom
- Second bedroom enjoys east-facing views of green space
- Separate bathroom and two hallway store cupboards

Audley St George's Place  
2 Church Road  
Edgbaston, West Midlands B15 3SH  
0121 454 5270  
[www.audleyvillages.co.uk](http://www.audleyvillages.co.uk)

