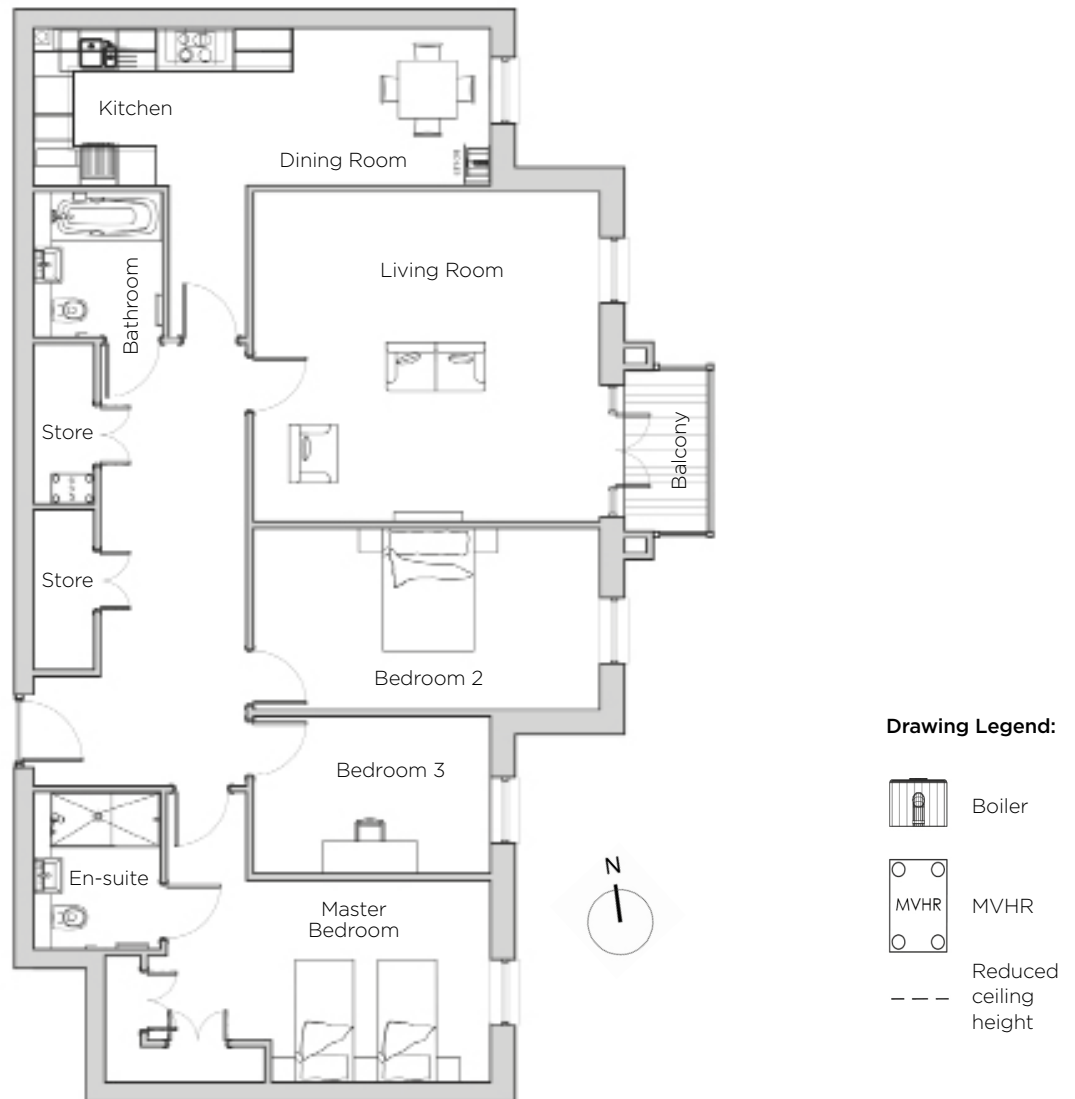
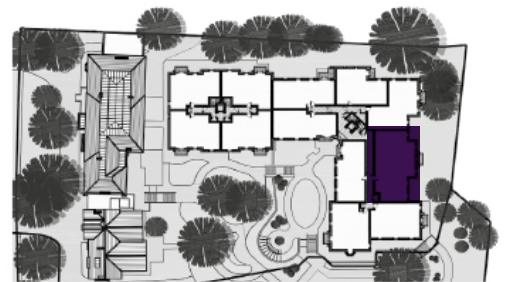


Audley St George's Place

37 Chamberlain Place (E28)
Second Floor Apartment



Internal Measurements	Metric (m)	Imperial (ft)
Living Room	5.36m x 5.10m	17'7" x 16'8"
Kitchen	7.07m x 2.43m	23'2" x 7'11"
Master Bedroom	5.96m x 4.49m	19'6" x 14'8"
Bedroom 2	5.36m x 2.81m	17'5" x 9'2"
Bedroom 3	3.67m x 2.43m	12'0" x 7'11"
Total Apartment Area	127.2m²	1369ft²



Audley St George's Place
2 Church Road, Edgbaston, West Midlands B15 3SH
0121 454 5270
www.audleyvillages.co.uk

Built-in wardrobes in bedrooms have not been included in the overall dimensions.
Maximum measurements shown. These pages are intended for marketing purposes only.
Designs vary according to plot and all details should be checked at the Sales Office.
March 2018



Audley St George's Place

37 Chamberlain Place (E28)
Second Floor Apartment



CGI for illustration purposes only



3 bedroom second floor apartment

This spectacular three bedroom apartment has space and light to create a peaceful atmosphere. The living room opens out onto a private east-facing balcony overlooking landscaped gardens and ample green space.

Property specifications:

- SieMatic kitchen with integrated appliances and Corian worktops
- Private balcony
- Two storage cupboards in hallway
- Fitted wardrobes and en-suite shower in master bedroom
- Large second bedroom and a study which could also be used as a third bedroom
- Separate bathroom

Audley St George's Place
2 Church Road, Edgbaston, West Midlands B15 3SH
0121 454 5270
www.audleyvillages.co.uk



Photos for illustration purposes only