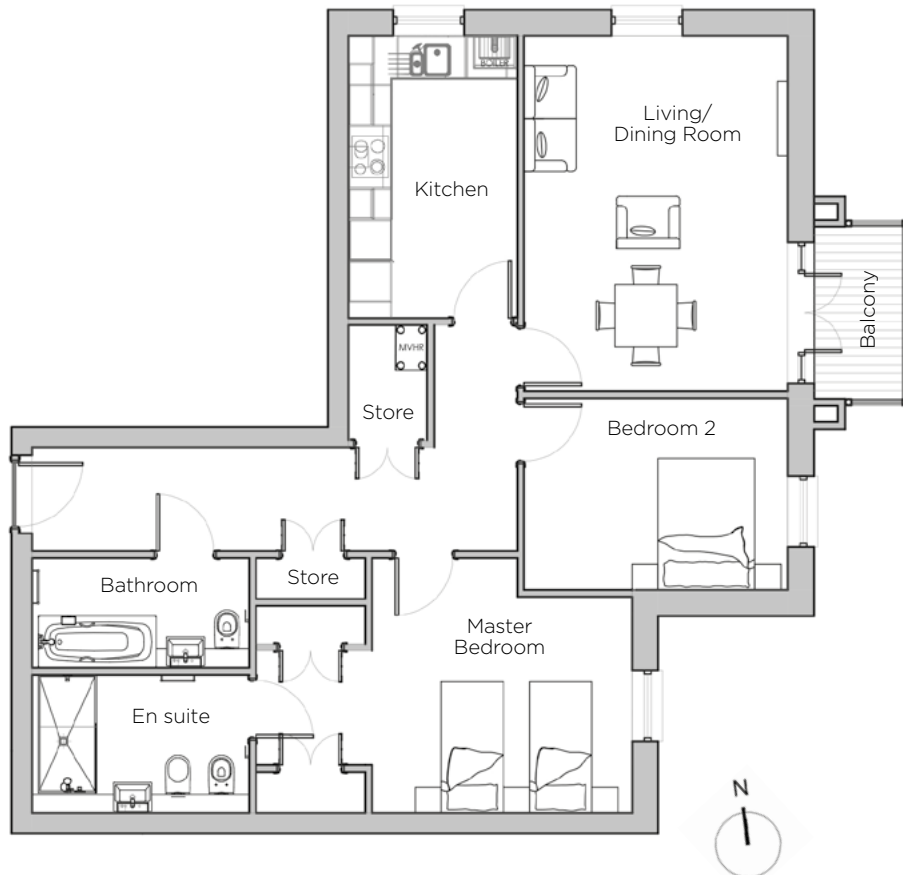
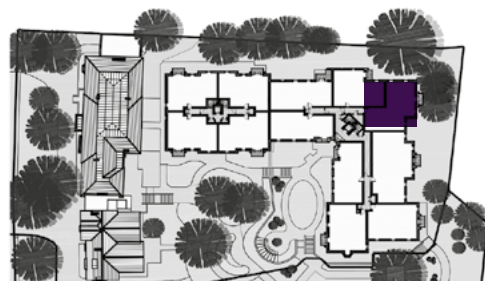


Audley St George's Place

36 Chamberlain Place (E27)
Second Floor Apartment



Internal Measurements	Metric (m)	Imperial (ft)
Living/Dining Room	5.14 x 3.80	16'10" x 12'5"
Kitchen	4.08 x 2.42	13'4" x 7'11"
Master Bedroom	5.43 x 3.69	17'9" x 12'1"
Bedroom 2	3.80 x 2.77	12'5" x 9'1"
Total Apartment Area	88.7m ²	955ft ²



Audley St George's Place
2 Church Road
Edgbaston, West Midlands B15 3SH
0121 454 5270
www.audleyvillages.co.uk

Built-in wardrobes in bedrooms have not been included in the overall dimensions.
Maximum measurements shown. These pages are intended for marketing purposes only.
Designs vary according to plot and all details should be checked at the Sales Office.
March 2019



Audley St George's Place

36 Chamberlain Place (E27)
Second Floor Apartment



2 bedroom, second floor apartment

A luxurious two double bedroom apartment with a high-quality SieMatic kitchen, fitted wardrobes and en suite shower room in the master bedroom and a private east-facing balcony leading from the light dual-aspect living/dining room.

Property specifications:

- Two separate fitted wardrobes either side of the master bedroom
- En suite shower and separate main bathroom
- East-facing window in second bedroom
- Private balcony
- Luxury kitchen with integrated appliances and Corian worktops
- Two storage cupboards in hallway

Audley St George's Place
2 Church Road
Edgbaston, West Midlands B15 3SH
0121 454 5270
www.audleyvillages.co.uk

