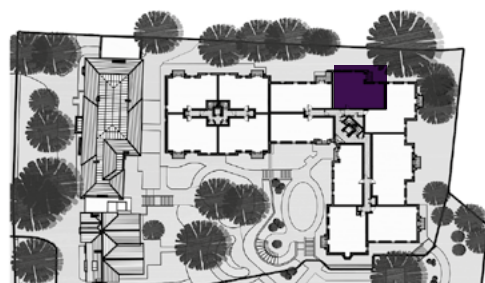


# Audley St George's Place

35 Chamberlain Place (E26)  
Second Floor Apartment



Internal Measurements	Metric (m)	Imperial (ft)
Living/Dining Room	5.59 x 3.73	18'5" x 12'0"
Kitchen	3.67 x 2.35	12'0" x 7'9"
Master Bedroom	5.65 x 3.97	18'6" x 13'0"
Bedroom 2	4.59 x 2.83	15'1" x 9'3"
Total Apartment Area	81.1m <sup>2</sup>	873ft <sup>2</sup>



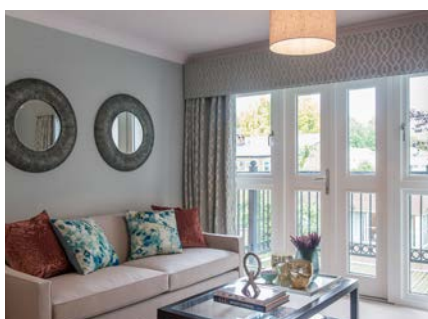
Audley St George's Place  
2 Church Road  
Edgbaston, West Midlands B15 3SH  
0121 454 5270  
[www.audleyvillages.co.uk](http://www.audleyvillages.co.uk)

Built-in wardrobes in bedrooms have not been included in the overall dimensions.  
Maximum measurements shown. These pages are intended for marketing purposes only.  
Designs vary according to plot and all details should be checked at the Sales Office.  
August 2020



# Audley St George's Place

35 Chamberlain Place (E26)  
Second Floor Apartment



## 2 bedroom, second floor apartment

This second floor apartment lies at the top edge of St George's Place retirement village with a delightful east-facing private balcony and two spacious double bedrooms.

Property specifications:

- French doors leading from living/dining room onto private balcony
- Fitted wardrobes and en suite shower in master bedroom
- Spacious storage cupboard in hallway
- Large guest bedroom and separate bathroom
- SieMatic kitchen with integrated appliances and Corian worktops

Audley St George's Place  
2 Church Road  
Edgbaston, West Midlands B15 3SH  
0121 454 5270  
[www.audleyvillages.co.uk](http://www.audleyvillages.co.uk)

