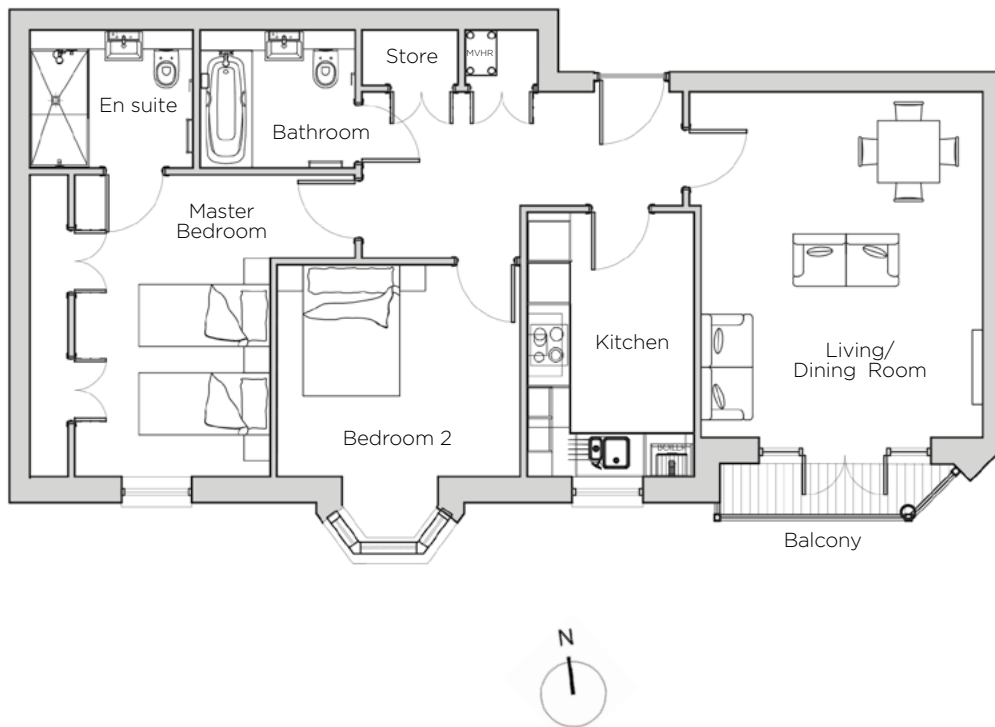
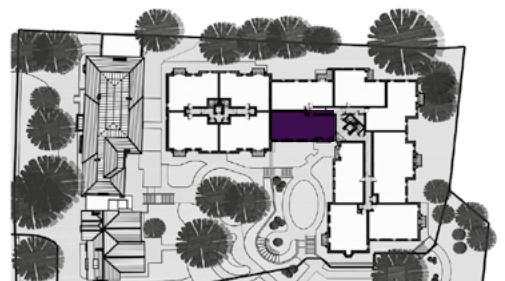


Audley St George's Place

33 Chamberlain Place (E32)
Second Floor Apartment



Internal Measurements	Metric (m)	Imperial (ft)
Living/Dining Room	4.99 x 4.25	16'4" x 13'11"
Kitchen	3.82 x 2.41	12'6" x 7'10"
Master Bedroom	4.70 x 4.37	15'5" x 14'4"
Bedroom 2	3.06 x 3.52	10'0" x 11'6"
Total Apartment Area	81.3m ²	875ft ²



Audley St George's Place
2 Church Road
Edgbaston, West Midlands B15 3SH
0121 454 5270
www.audleyvillages.co.uk

Built-in wardrobes in bedrooms have not been included in the overall dimensions.
Maximum measurements shown. These pages are intended for marketing purposes only.
Designs vary according to plot and all details should be checked at the Sales Office.
March 2019



Audley St George's Place

33 Chamberlain Place (E32)
Second Floor Apartment



CGI for illustration purposes only



2 bedroom, second floor apartment

A spacious two bedroom apartment with architectural features echoing the historical buildings of the surrounding area. Both bedrooms and the living/dining room have a south-east facing aspect including a private balcony looking across the village.

Property specifications:

- Fitted wardrobes and en suite shower in master bedroom
- Bay window in second bedroom
- Integrated appliances and Corian worktops in kitchen
- Spacious living room with south-east facing private balcony
- Separate main bathroom

Audley St George's Place
2 Church Road
Edgbaston, West Midlands B15 3SH
0121 454 5270
www.audleyvillages.co.uk



Photos for illustration purposes only