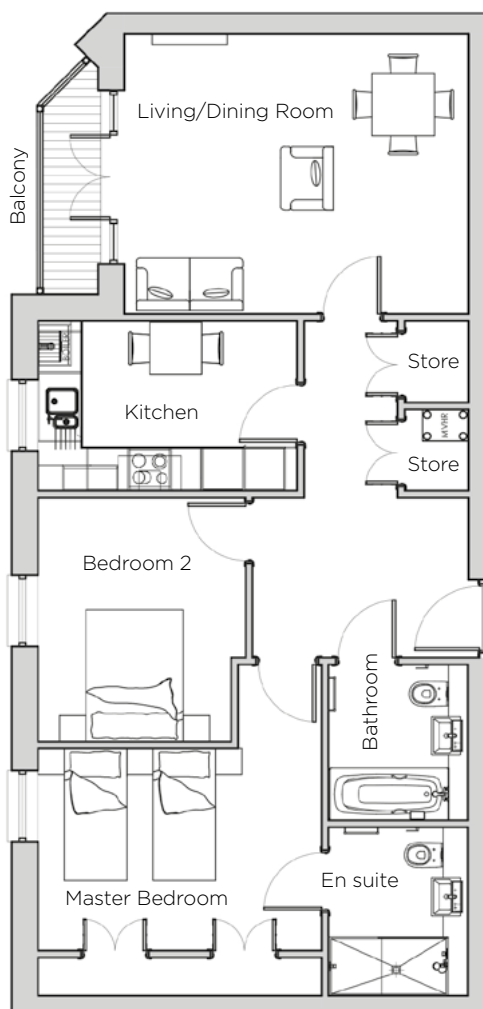
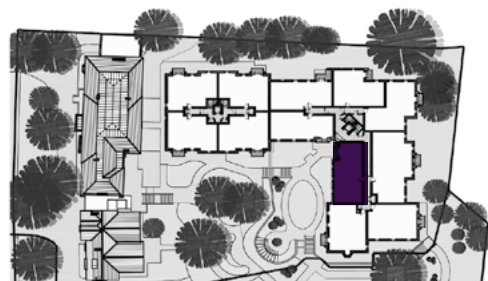


Audley St George's Place

32 Chamberlain Place (E19)
First Floor Apartment



Internal Measurements	Metric (m)	Imperial (ft)
Living/Dining Room	4.94 x 4.03	16'2" x 13'2"
Kitchen	3.71 x 2.45	12'1" x 8'0"
Master Bedroom	4.77 x 4.07	15'7" x 13'4"
Bedroom 2	3.51 x 2.97	11'6" x 9'8"
Total Apartment Area	81m ²	872ft ²



Audley St George's Place
2 Church Road
Edgbaston, West Midlands B15 3SH
0121 454 5270
www.audleyvillages.co.uk

Built-in wardrobes in bedrooms have not been included in the overall dimensions.
Maximum measurements shown. These pages are intended for marketing purposes only.
Designs vary according to plot and all details should be checked at the Sales Office.
March 2019



Audley St George's Place

32 Chamberlain Place (E19)
First Floor Apartment

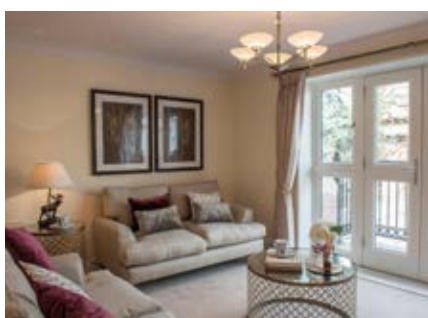


2 bedroom, first floor apartment

A beautiful apartment with a good deal of storage space, luxury kitchen and a light living/dining room with an east-facing balcony looking out over the landscaped courtyard of St George's Place retirement village.

Property specifications:

- French doors from living/dining room leading onto private balcony
- SieMatic kitchen with Corian worktops and space for a breakfast table
- Two double bedrooms with east-facing windows
- Two storage cupboards in hallway
- Bathroom and separate en suite shower room in master bedroom



Audley St George's Place
2 Church Road
Edgbaston, West Midlands B15 3SH
0121 454 5270
www.audleyvillages.co.uk

