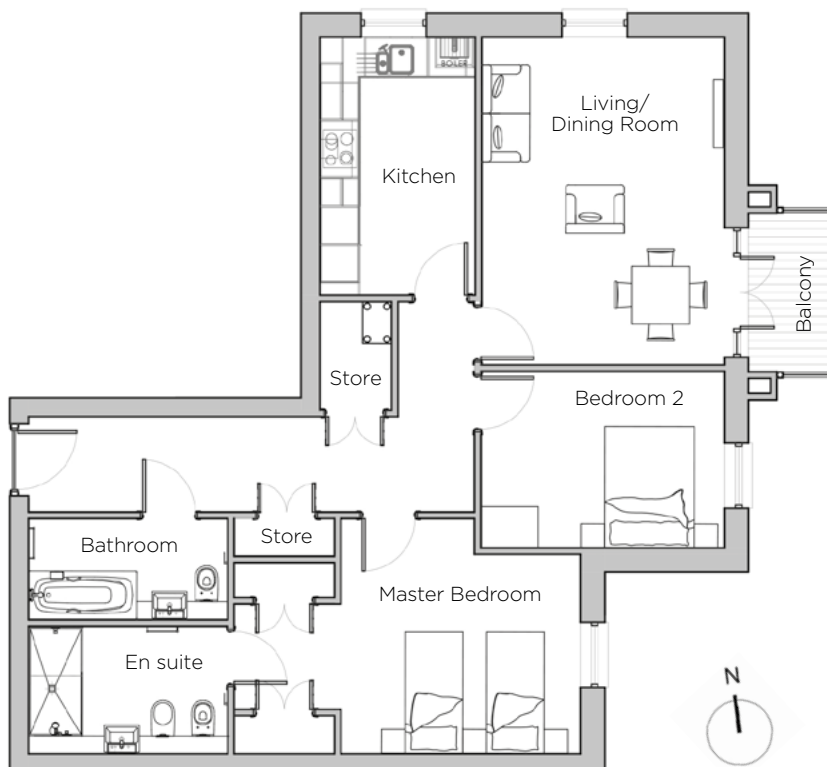
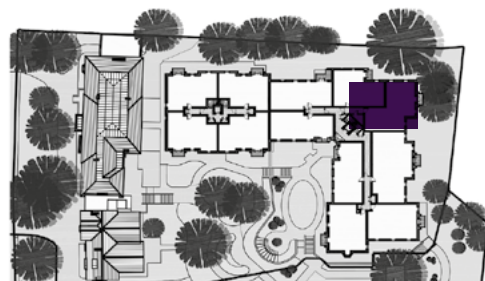


Audley St George's Place

28 Chamberlain Place (E15)
First Floor Apartment



| Internal Measurements | Metric (m) | Imperial (ft) |
|-----------------------|--------------------|--------------------|
| Living/Dining Room | 5.14 x 3.80 | 16'10" x 12'5" |
| Kitchen | 4.08 x 2.44 | 13'4" x 8'0" |
| Master Bedroom | 5.43 x 3.69 | 17'9" x 12'1" |
| Bedroom 2 | 3.82 x 2.77 | 9'84" x 9'1" |
| Total Apartment Area | 88.7m ² | 955ft ² |



Audley St George's Place
2 Church Road
Edgbaston, West Midlands B15 3SH
0121 454 5270
www.audleyvillages.co.uk

Built-in wardrobes in bedrooms have not been included in the overall dimensions.
Maximum measurements shown. These pages are intended for marketing purposes only.
Designs vary according to plot and all details should be checked at the Sales Office.
March 2019



Audley St George's Place

28 Chamberlain Place (E15)
First Floor Apartment



2 bedroom, first floor apartment

A dual aspect, two bedroom apartment within the new build Chamberlain Place development. An east-facing balcony looks across landscaped grounds and fields beyond.

Property specifications:

- SieMatic kitchen with Corian worktops and integrated appliances
- Two storage cupboards in hallway as well as fitted wardrobes in the master bedroom
- En suite shower plus additional bathroom
- French doors from living/dining room leading onto east-facing balcony

Audley St George's Place
2 Church Road
Edgbaston, West Midlands B15 3SH
0121 454 5270
www.audleyvillages.co.uk

