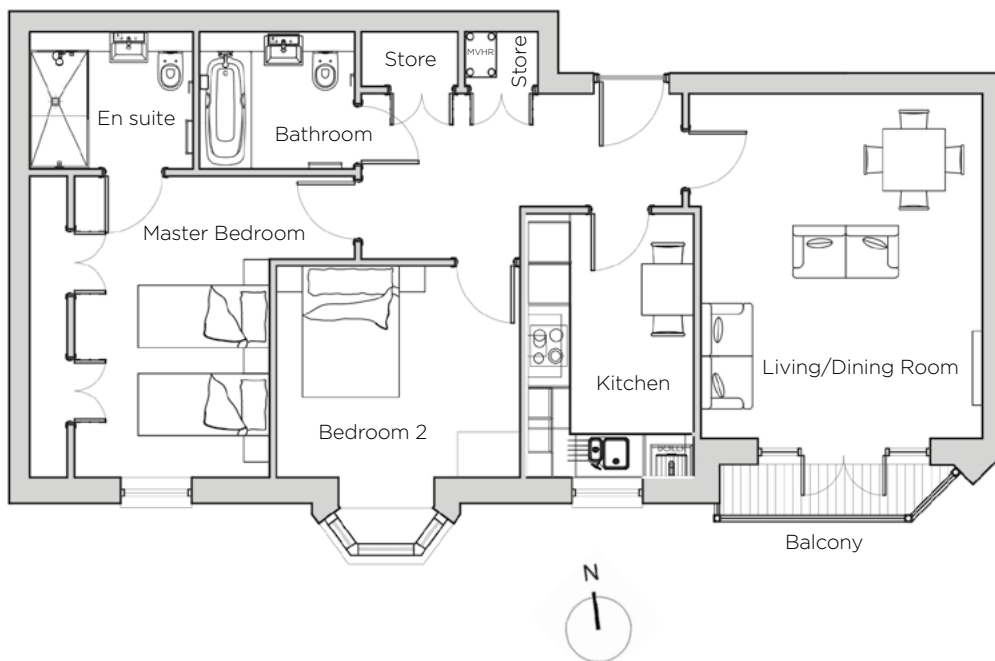
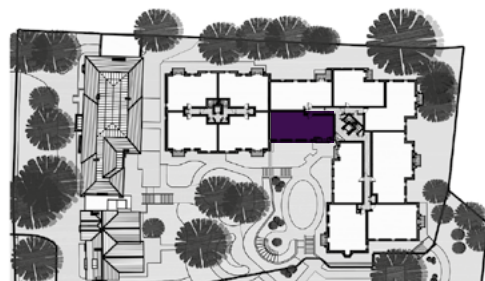


Audley St George's Place

25 Chamberlain Place (E20)
First Floor Apartment



Internal Measurements	Metric (m)	Imperial (ft)
Living/Dining Room	4.99 x 4.25	16'4" x 13'11"
Kitchen	3.81 x 2.41	12'6" x 7'10"
Master Bedroom	4.70 x 4.37	15'5" x 14'4"
Bedroom 2	3.06 x 3.52	10'0" x 11'6"
Total Apartment Area	82.5m ²	888ft ²



Audley St George's Place
2 Church Road
Edgbaston, West Midlands B15 3SH
0121 454 5270
www.audleyvillages.co.uk

Built-in wardrobes in bedrooms have not been included in the overall dimensions.
Maximum measurements shown. These pages are intended for marketing purposes only.
Designs vary according to plot and all details should be checked at the Sales Office.
March 2019



Audley St George's Place

25 Chamberlain Place (E20)
First Floor Apartment



CGI for illustration purposes only



2 bedroom, first floor apartment

This bright, modern apartment benefits from a large south-facing private balcony overlooking landscaped grounds, as well as features such as a large bay window in the guest bedroom.

Property specifications:

- Master bedroom with south-facing window and fitted wardrobes
- Two storage cupboards in spacious hallway
- En suite shower as well as separate main bathroom
- Feature bay window in second bedroom
- Luxury fitted kitchen with Corian worktops
- French doors from living/dining room onto south-facing balcony

Audley St George's Place
2 Church Road
Edgbaston, West Midlands B15 3SH
0121 454 5270
www.audleyvillages.co.uk



Photos for illustration purposes only