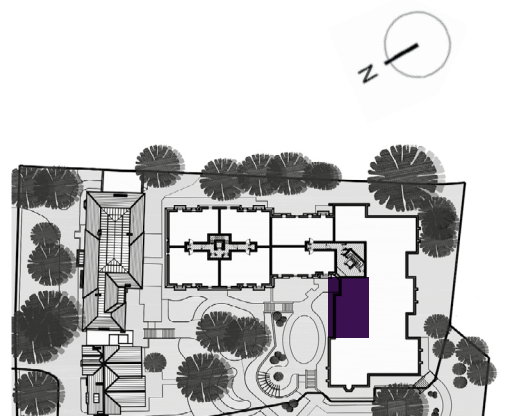


Audley St George's Place

24 Chamberlain Place (E08)
Ground Floor Apartment



Internal Measurements	Metric (m)	Imperial (ft)
Living/Dining Room	4.94 x 4.03	16'2" x 13'2"
Kitchen	3.73 x 2.45	12'3" x 8'0"
Master Bedroom	4.08 x 4.77	13'4" x 15'7"
Bedroom 2	3.51 x 2.82	11'6" x 9'3"
Total Apartment Area	81m ²	872ft ²



Audley St George's Place
2 Church Road
Edgbaston, West Midlands B15 3SH
0121 454 5270
www.audleyvillages.co.uk

Built-in wardrobes in bedrooms have not been included in the overall dimensions.
Maximum measurements shown. These pages are intended for marketing purposes only.
Designs vary according to plot and all details should be checked at the Sales Office.
August 2020



Audley St George's Place

24 Chamberlain Place (E08)
Ground Floor Apartment



2 bedroom, ground floor apartment

A delightful west-facing two bedroom apartment positioned overlooking a landscaped courtyard from the private terrace. A high-quality finish gives this property a feeling of elegance and luxury.

Property specifications:

- Living/dining room with French doors onto private west-facing terrace
- Ensuite shower room and additional bathroom
- Master bedroom with fitted wardrobes
- SieMatic kitchen with Corian worktops and integrated appliances

Audley St George's Place
2 Church Road
Edgbaston, West Midlands B15 3SH
0121 454 5270
www.audleyvillages.co.uk

