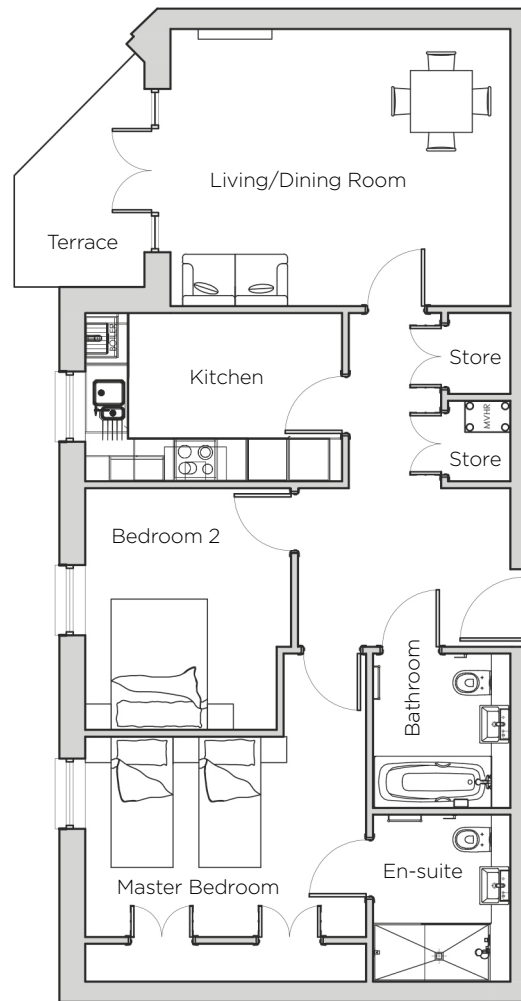


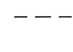


# Audley St George's Place

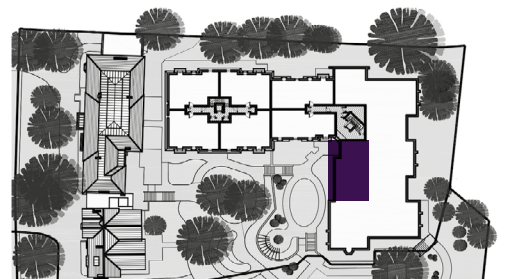
24 Chamberlain Place (E08)  
Ground Floor Apartment



#### Drawing Legend:

-  Boiler
-  MVHR
-  Reduced ceiling height

Internal Measurements	Metric (m)	Imperial (ft)
Living/Dining Room	4.94m x 4.03m	16'2" x 13'2"
Kitchen	3.73m x 2.45m	12'3" x 8'0"
Master Bedroom	4.08m x 4.77m	13'4" x 15'7"
Bedroom 2	3.51m x 2.82m	11'6" x 9'3"
<b>Total Apartment Area</b>	<b>81m<sup>2</sup></b>	<b>872ft<sup>2</sup></b>



Audley St George's Place  
2 Church Road, Edgbaston, West Midlands B15 3SH  
0121 454 5270  
[www.audleyvillages.co.uk](http://www.audleyvillages.co.uk)

Built-in wardrobes in bedrooms have not been included in the overall dimensions.  
Maximum measurements shown. These pages are intended for marketing purposes only.  
Designs vary according to plot and all details should be checked at the Sales Office.  
February 2018



# Audley St George's Place

24 Chamberlain Place (E08)  
Ground Floor Apartment



CGI for illustration purposes only

## 2 bedroom ground floor apartment

A delightful west-facing two bedroom apartment positioned overlooking a landscaped courtyard from the private terrace. A high-quality finish gives this property a feeling of elegance and luxury.

Property specifications:

- Living/dining room with French doors onto private west-facing terrace
- En-suite shower room and additional bathroom
- Master bedroom with fitted wardrobes
- SieMatic kitchen with Corian worktops and integrated appliances



Photos for illustration purposes only

Audley St George's Place  
2 Church Road, Edgbaston, West Midlands B15 3SH  
0121 454 5270  
[www.audleyvillages.co.uk](http://www.audleyvillages.co.uk)

