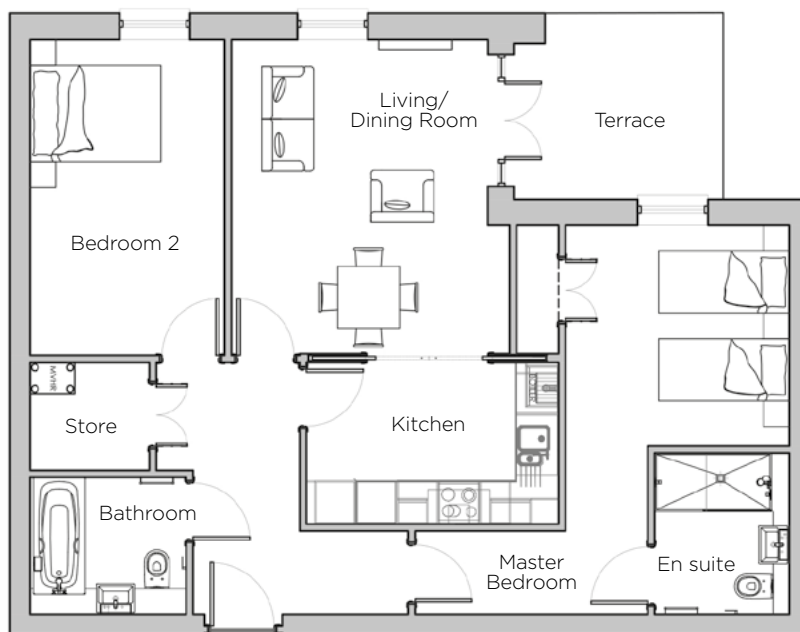
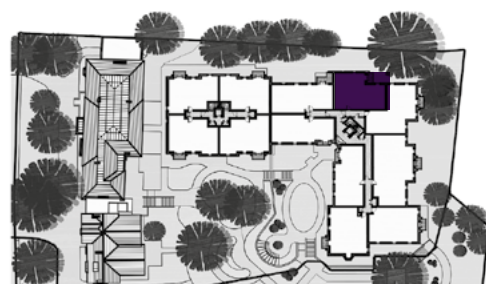


Audley St George's Place

19 Chamberlain Place (E02)
Ground Floor Apartment



Internal Measurements	Metric (m)	Imperial (ft)
Living/Dining Room	4.54 x 3.73	14'11" x 12'3"
Kitchen	3.67 x 2.35	12'0" x 7'9"
Master Bedroom	5.65 x 3.97	81'6" x 13'0"
Bedroom 2	4.59 x 2.83	15'1" x 9'3"
Total Apartment Area	81.5m ²	874ft ²



Audley St George's Place
2 Church Road
Edgbaston, West Midlands B15 3SH
0121 454 5270
www.audleyvillages.co.uk

Built-in wardrobes in bedrooms have not been included in the overall dimensions.
Maximum measurements shown. These pages are intended for marketing purposes only.
Designs vary according to plot and all details should be checked at the Sales Office.
March 2019



Audley St George's Place

19 Chamberlain Place (E02)
Ground Floor Apartment



2 bedroom, ground floor apartment

This luxurious property has two spacious bedrooms, with an en suite shower room in the master bedroom, as well as a private terrace, within the new build Chamberlain Place.

Property specifications:

- Large second bedroom
- Large storage area off hallway
- Living/dining room with patio doors leading onto a private terrace
- Luxury fitted kitchen
- Fitted wardrobe in master bedroom

Audley St George's Place
2 Church Road
Edgbaston, West Midlands B15 3SH
0121 454 5270
www.audleyvillages.co.uk

