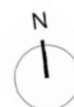
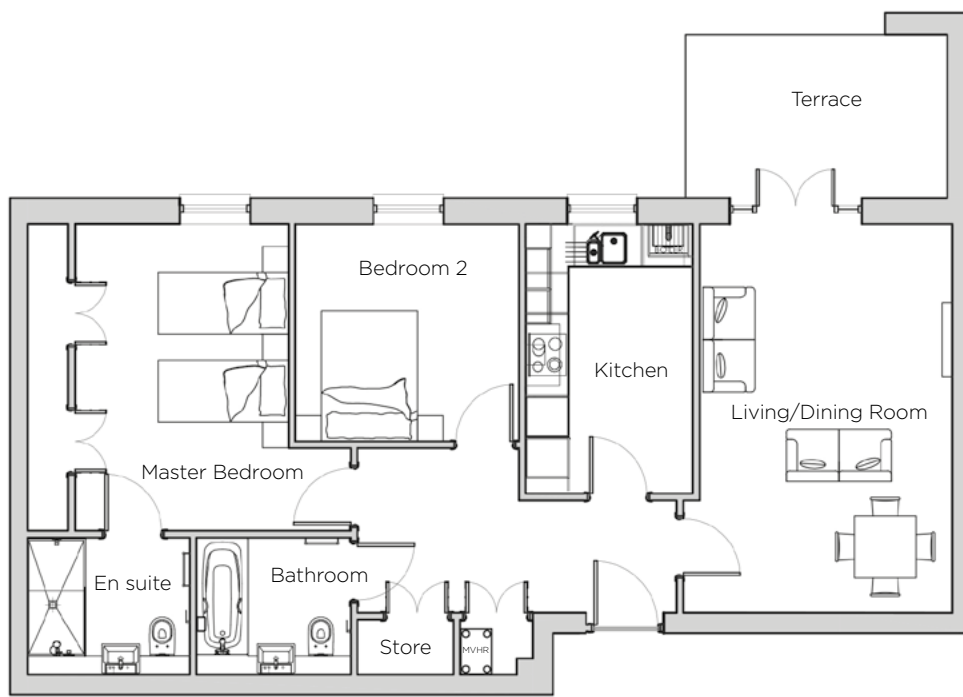
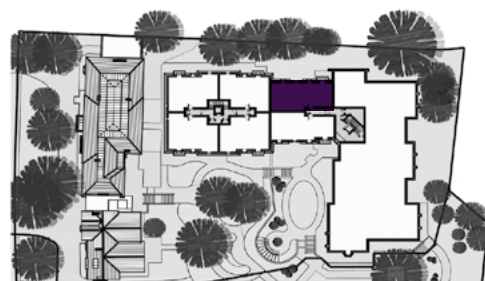


Audley St George's Place

18 Chamberlain Place (E01)
Ground Floor Apartment



Internal Measurements	Metric (m)	Imperial (ft)
Living/Dining Room	5.64 x 3.91	18'6" x 12'10"
Kitchen	3.91 x 2.43	12'10" x 7'11"
Master Bedroom	4.70 x 4.45	15'5" x 14'7"
Bedroom 2	3.24 x 3.15	10'8" x 10'4"
Total Apartment Area	84.5m²	899ft²



Audley St George's Place
2 Church Road
Edgbaston, West Midlands B15 3SH
0121 454 5270
www.audleyvillages.co.uk

Built-in wardrobes in bedrooms have not been included in the overall dimensions.
Maximum measurements shown. These pages are intended for marketing purposes only.
Designs vary according to plot and all details should be checked at the Sales Office.
March 2019



Audley St George's Place

18 Chamberlain Place (E01)
Ground Floor Apartment

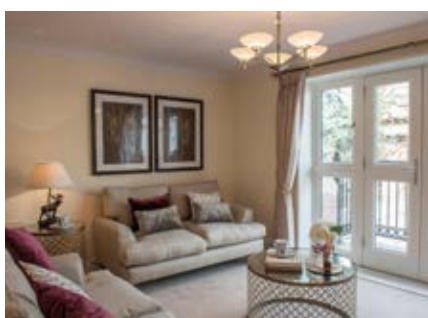


2 bedroom, ground floor apartment

Situated within the stylish new building Chamberlain Place, this two bedroom apartment benefits from a luxury kitchen, en suite and a private terrace at the northern edge of the village.

Property specifications:

- Large living/dining room leading out to a private terrace
- SieMatic kitchen with integrated appliances
- Separate main bathroom and guest bedroom
- En suite shower and fitted wardrobes in master bedroom



Audley St George's Place
2 Church Road
Edgbaston, West Midlands B15 3SH
0121 454 5270
www.audleyvillages.co.uk

