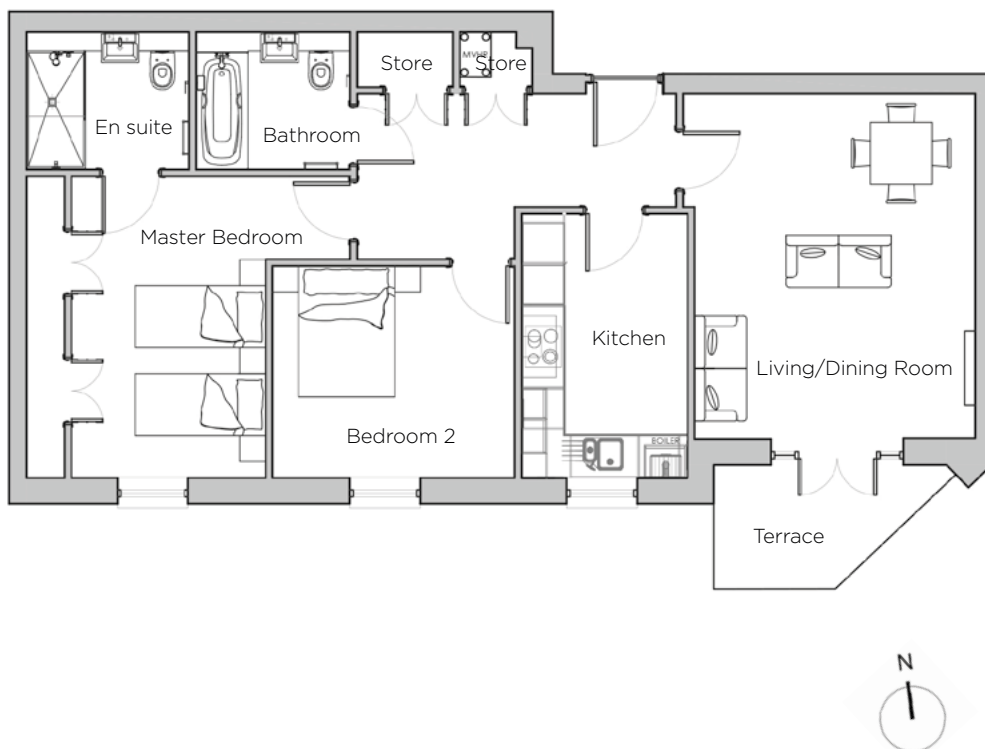
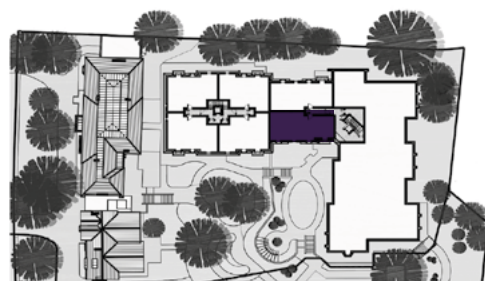


Audley St George's Place

17 Chamberlain Place (E04)
Ground Floor Apartment



Internal Measurements	Metric (m)	Imperial (ft)
Living/Dining Room	5.00 x 4.25	16'4" x 13'11"
Kitchen	3.83 x 2.41	12'6" x 7'10"
Master Bedroom	4.70 x 4.37	15'5" x 14'4"
Bedroom 2	3.52 x 3.07	11'6" x 10'0"
Total Apartment Area	81.5m ²	877ft ²



Audley St George's Place
2 Church Road
Edgbaston, West Midlands B15 3SH
0121 454 5270
www.audleyvillages.co.uk

Built-in wardrobes in bedrooms have not been included in the overall dimensions.
Maximum measurements shown. These pages are intended for marketing purposes only.
Designs vary according to plot and all details should be checked at the Sales Office.
March 2019



Audley St George's Place

17 Chamberlain Place (E04)
Ground Floor Apartment



2 bedroom ground floor apartment

A stunning apartment with a private, south-facing terrace which leads onto the landscaped courtyard at the centre of St George's Place retirement village.

Property specifications:

- Light and spacious living room with French doors leading out to the private terrace
- Master bedroom and guest bedroom both with south-facing aspect
- Fitted wardrobes in master bedroom
- En suite shower plus main bathroom
- Fully fitted kitchen with SieMatic units and Corian worktops

Audley St George's Place
2 Church Road
Edgbaston, West Midlands B15 3SH
0121 454 5270
www.audleyvillages.co.uk

