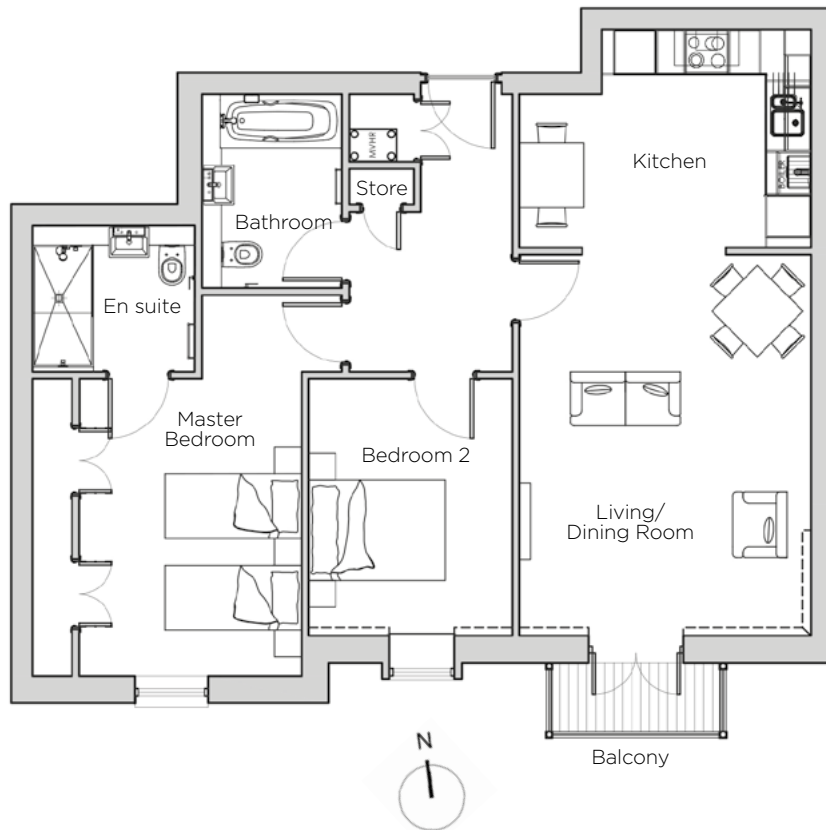
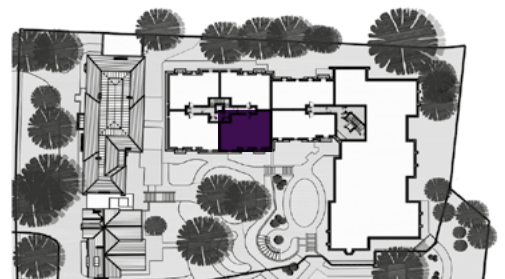


Audley St George's Place

16 Chamberlain Place (E47)
Third Floor Apartment



| Internal Measurements | Metric (m) | Imperial (ft) |
|-----------------------------|--------------------------|--------------------------|
| Living/Dining Room | 5.31 x 4.05 | 17'5" x 13'3" |
| Kitchen | 4.05 x 3.04 | 13'3" x 9'11" |
| Master Bedroom | 5.31 x 4.31 | 17'5" x 14'1" |
| Bedroom 2 | 3.58 x 2.83 | 11'8" x 9'3" |
| Total Apartment Area | 82.4m² | 887ft² |



Audley St George's Place
2 Church Road
Edgbaston, West Midlands B15 3SH
0121 454 5270
www.audleyvillages.co.uk

Built-in wardrobes in bedrooms have not been included in the overall dimensions.
Maximum measurements shown. These pages are intended for marketing purposes only.
Designs vary according to plot and all details should be checked at the Sales Office.
March 2019



Audley St George's Place

16 Chamberlain Place (E47)
Third Floor Apartment



2 bedroom, third floor apartment

With a sunny south-facing aspect, this top floor apartment is awash with natural light and a sense of calm, looking over the heart of St George's Place retirement village.

Property specifications:

- Spacious master bedroom with fitted wardrobes across one wall
- Main bathroom plus separate en suite shower room
- High quality SieMatic kitchen with integrated appliances
- Guest bedroom with south-facing window
- Private balcony

Audley St George's Place
2 Church Road
Edgbaston, West Midlands B15 3SH
0121 454 5270
www.audleyvillages.co.uk

