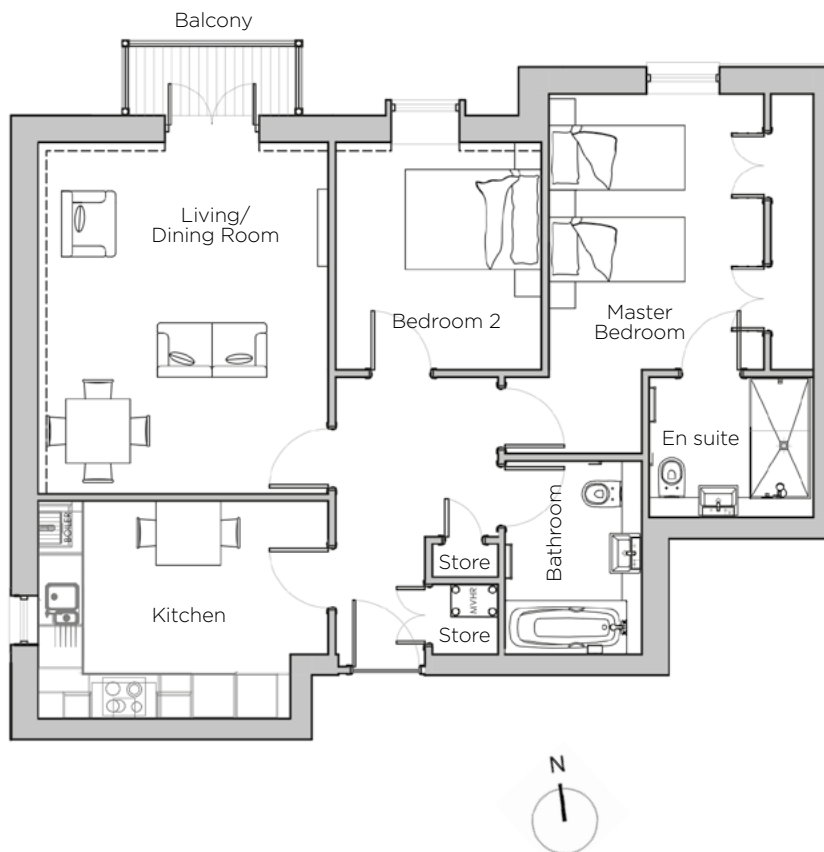
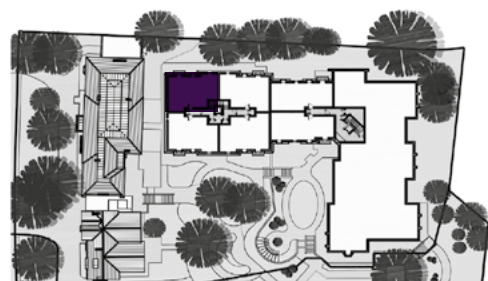


Audley St George's Place

14 Chamberlain Place (E45)
Third Floor Apartment



Internal Measurements	Metric (m)	Imperial (ft)
Living/Dining Room	4.91 x 4.05	16'1" x 13'03"
Kitchen	4.05 x 3.04	13'3" x 9'11"
Master Bedroom	5.02 x 3.70	16'5" x 12'1"
Bedroom 2	3.18 x 2.88	10'5" x 9'5"
Total Apartment Area	78.9m²	849ft²



Audley St George's Place
2 Church Road
Edgbaston, West Midlands B15 3SH
0121 454 5270
www.audleyvillages.co.uk

Built-in wardrobes in bedrooms have not been included in the overall dimensions.
Maximum measurements shown. These pages are intended for marketing purposes only.
Designs vary according to plot and all details should be checked at the Sales Office.
March 2019



Audley St George's Place

14 Chamberlain Place (E45)
Third Floor Apartment



CGI for illustration purposes only



2 bedroom, third floor apartment

Just moments away from St George's House with its health club, swimming pool and restaurant, this top floor apartment is part of the attractive new build Chamberlain Place.

Property specifications:

- Lift and stairs access to all floors
- Private balcony from living/dining room
- Luxury kitchen with west aspect
- Fitted wardrobes across one wall of master bedroom
- En suite shower plus separate main bathroom

Audley St George's Place
2 Church Road
Edgbaston, West Midlands B15 3SH
0121 454 5270
www.audleyvillages.co.uk



Photos for illustration purposes only