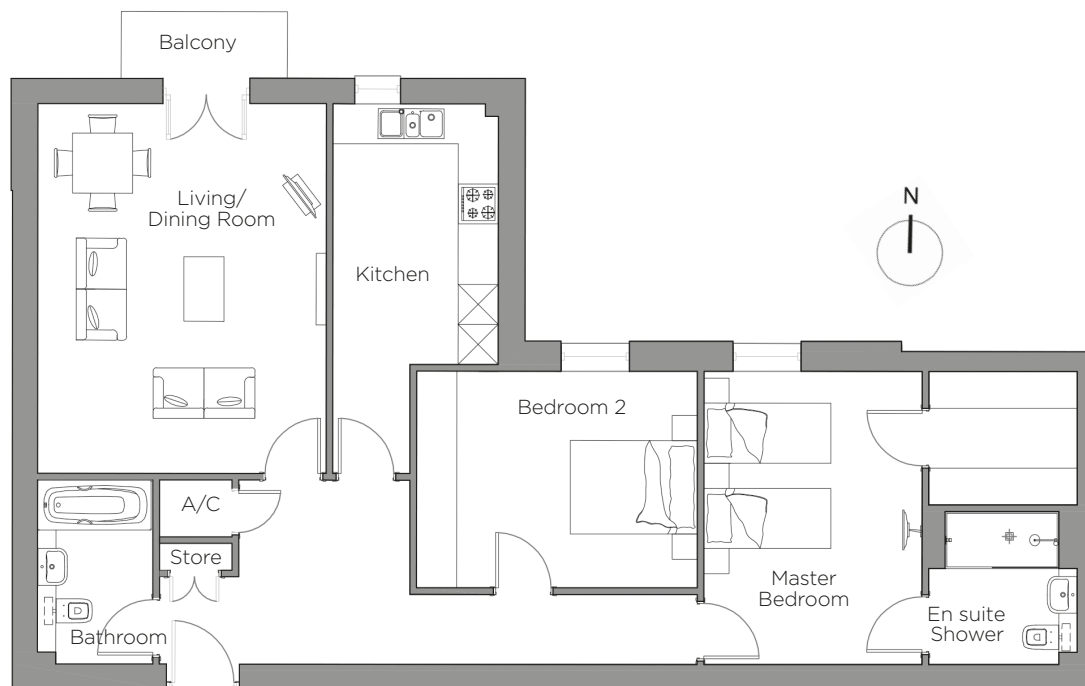
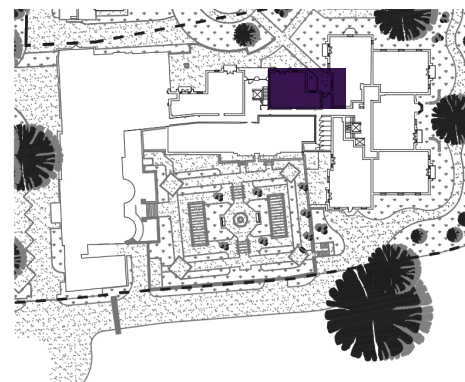


Audley St George's Place

12 Gabriel Place (F11)
Third Floor Apartment



Internal Measurements	Metric (m)	Imperial (ft)
Living/Dining Room	5.53 x 4.32	18'1" x 14'2"
Kitchen	5.53 x 2.47	18'1" x 8'1"
Master Bedroom	4.38 x 3.27	14'4" x 10'8"
Bedroom 2	4.20 x 3.24	13'9" x 10'7"
Total Apartment Area	92.9m ²	1001ft ²



Audley St George's Place
2 Church Road
Edgbaston, West Midlands B15 3SH
0121 454 5270
www.audleyvillages.co.uk

Built-in wardrobes in bedrooms have not been included in the overall dimensions.
Maximum measurements shown. These pages are intended for marketing purposes only.
Designs vary according to plot and all details should be checked at the Sales Office.
March 2019



Audley St George's Place

12 Gabriel Place (F11)
Third Floor Apartment



2 bedroom, third floor apartment

A two double bedroom apartment with luxurious features such as a walk-in wardrobe, en suite shower room and separate bathroom, SieMatic kitchen and a private balcony with views over the landscaped grounds of the village.

Property specifications:

- High quality kitchen with Corian worktops and integrated appliances
- Private balcony
- Spacious living/dining room
- Master bedroom with walk-in wardrobes
- En suite shower room plus separate bathroom

Audley St George's Place
2 Church Road
Edgbaston, West Midlands B15 3SH
0121 454 5270
www.audleyvillages.co.uk

