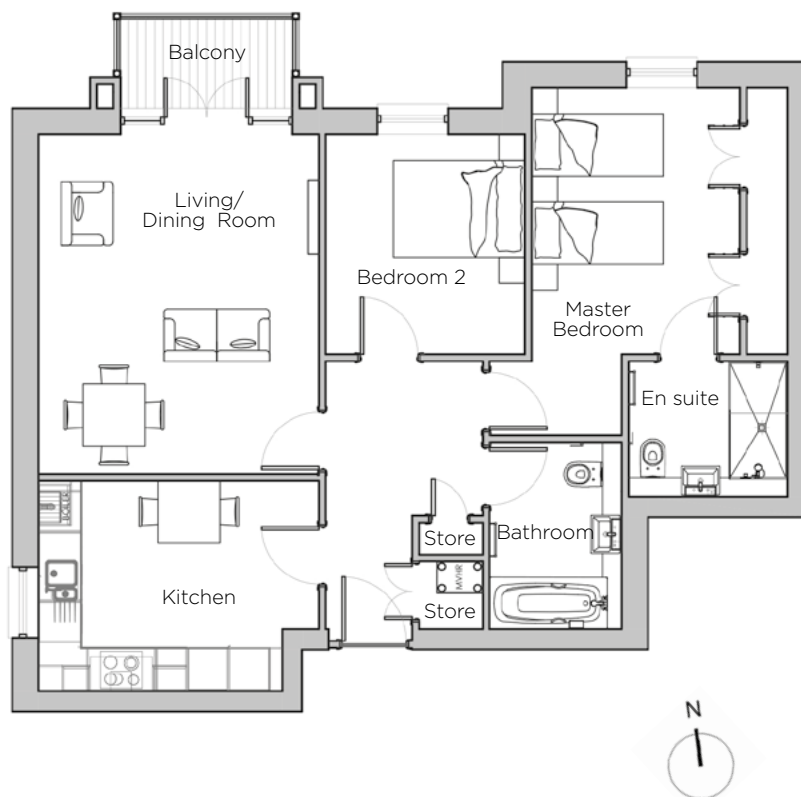
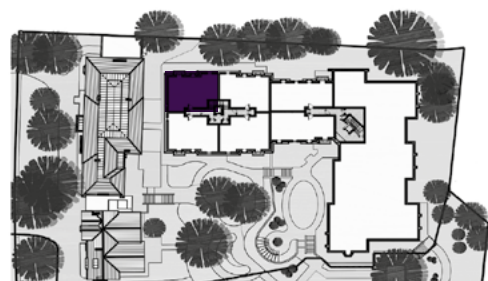


# Audley St George's Place

10 Chamberlain Place (E33)  
Second Floor Apartment



Internal Measurements	Metric (m)	Imperial (ft)
Living/Dining Room	4.90 x 4.05	16'1" x 13'3"
Kitchen	4.05 x 3.04	13'3" x 9'11"
Master Bedroom	5.02 x 3.70	16'5" x 12'1"
Bedroom 2	3.18 x 2.88	10'5" x 9'5"
<b>Total Apartment Area</b>	<b>79.1m<sup>2</sup></b>	<b>851ft<sup>2</sup></b>



Audley St George's Place  
2 Church Road  
Edgbaston, West Midlands B15 3SH  
0121 454 5270  
[www.audleyvillages.co.uk](http://www.audleyvillages.co.uk)

Built-in wardrobes in bedrooms have not been included in the overall dimensions.  
Maximum measurements shown. These pages are intended for marketing purposes only.  
Designs vary according to plot and all details should be checked at the Sales Office.  
March 2019



# Audley St George's Place

10 Chamberlain Place (E33)  
Second Floor Apartment

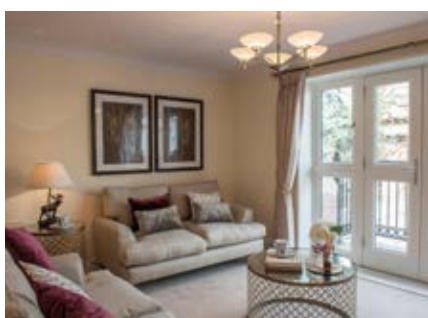


## 2 bedroom, second floor apartment

A stunning two double bedroom apartment with en suite shower room as well as separate main bathroom, plus a private timber-decked balcony from the spacious living/dining room.

Property specifications:

- Fitted wardrobes in master bedroom
- Guest bedroom
- En suite shower room and main bathroom
- Luxury kitchen with west-facing window
- Private balcony



Audley St George's Place  
2 Church Road  
Edgbaston, West Midlands B15 3SH  
0121 454 5270  
[www.audleyvillages.co.uk](http://www.audleyvillages.co.uk)

