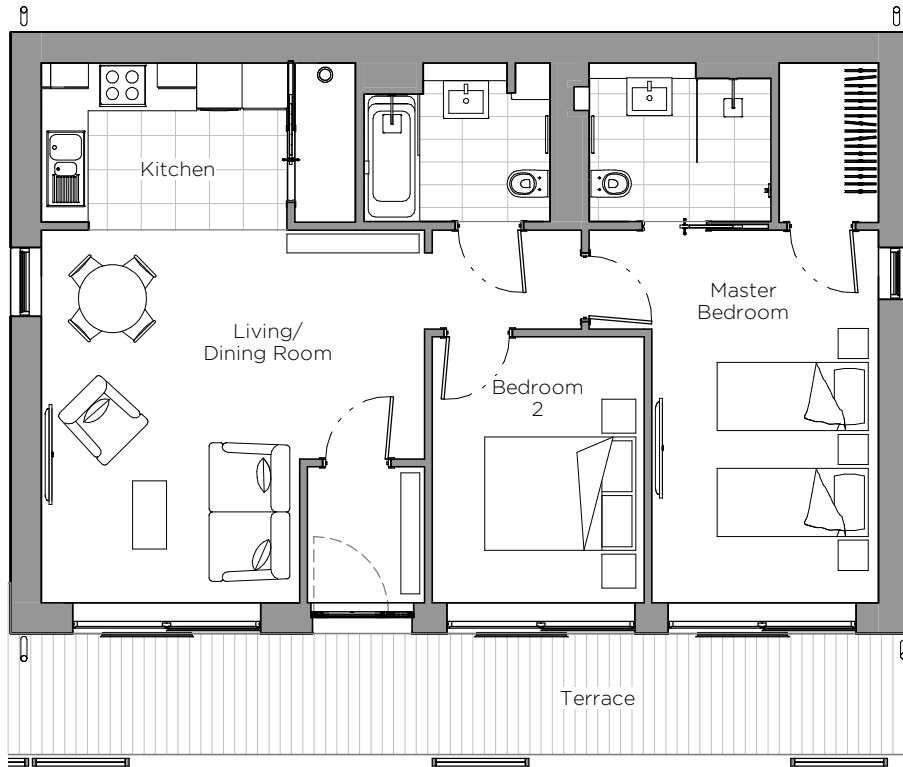


# Audley St Elphin's Park

Apartment 4  
Ground Floor  
Block F

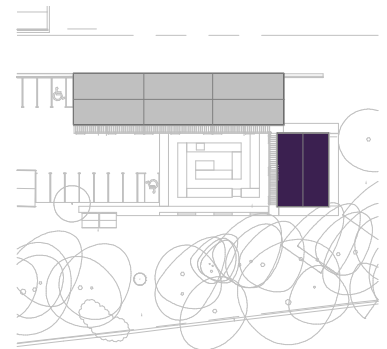


## Internal Measurements

## Metric (m)

## Imperial (ft)

|                    |              |               |
|--------------------|--------------|---------------|
| Living/Dining Room | 4.93 x 5.07  | 16'2" x 16'8" |
| Kitchen            | 2.21 x 3.25  | 7'3" x 10'8"  |
| Master Bedroom     | 4.93 x 3.00  | 16'2" x 9'10" |
| Bedroom 2          | 3.52 x 2.80  | 11'7" x 9'2"  |
| Terrace            | 1.60 x 11.90 | 5'3" x 39'0"  |



Audley St Elphin's Park  
Dale Road South, Darley Dale,  
Matlock DE4 2RU  
01629 733 337  
[www.audleyvillages.co.uk](http://www.audleyvillages.co.uk)

These floor plans are illustrative and for marketing purposes only. Maximum measurements are shown with the length (vertical) dimension quoted first. Dimensions are quoted for the main area of the room only. Furniture shown to illustrate possible room layouts and not included within the sale. Designs vary according to plot. All details should be checked at the Sales Office.



# Audley St Elphin's Park



Audley St Elphin's Park  
Dale Road South, Darley Dale,  
Matlock DE4 2RU  
01629 733 337  
[www.audleyvillages.co.uk](http://www.audleyvillages.co.uk)

Photos for illustration purposes only.

