

# 14 Pollard Way





# 14 Pollard Way

## Two bedroom pre owned apartment

A spacious two bedroom apartment with stunning hillside views offering a master bedroom with fitted wardrobes and a separate guest bathroom. Set on the top floor of Pollard Way, the bright living/dining room has an open feel. The beautiful SieMatic kitchen has an integrated fridge-freezer, microwave, washer-dryer, fan-assisted cooker and dishwasher.

### Property specifications

- SieMatic kitchen with integrated appliances and Corian worktops
- Open living/dining room
- Spacious master bedroom with fitted wardrobes and walk in en suite shower
- Separate guest bathroom
- Allocated parking

**Guide Price £295,000** (other fees apply)

Monthly management fee £414.74

Annual ground rent £500

Bistro Credit £67.86

Council Tax Band: C

Viewing by appointment with the sales office.

**01629 733 337**

**stelphinssales@audleyvillages.co.uk**



# 14 Pollard Way

Internal Measurements

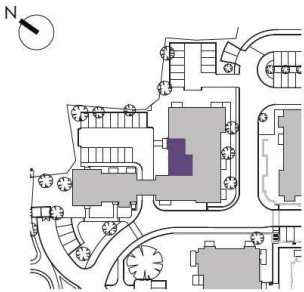
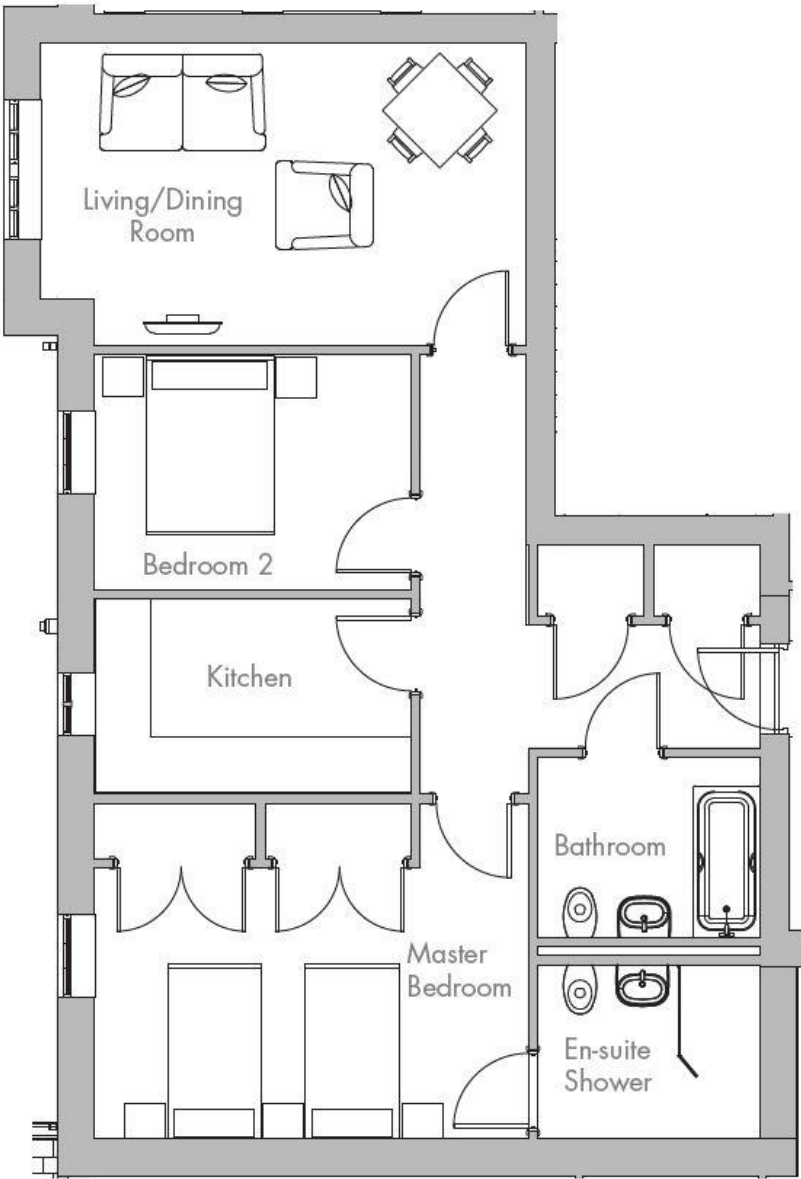
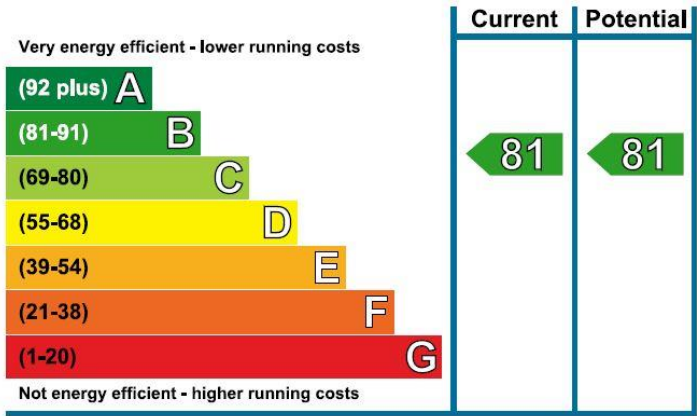
Metric (m)

Imperial (ft)

Living/Dining Room	5.38 x 3.35	17'8" x 11'0"
Kitchen	3.51 x 2.16	11'6" x 7'1"
Master Bedroom	4.81 x 3.09	15'9" x 10'2"
Bedroom 2	3.51 x 2.61	11'6" x 8'7"

Total Sq.Ft 834

Built in wardrobes in bedrooms have not been included in the overall dimensions. Maximum measurements shown.



These pages are intended for marketing purposes only. Designs vary according to plot and all details should be checked at the Sales office. May 2021



